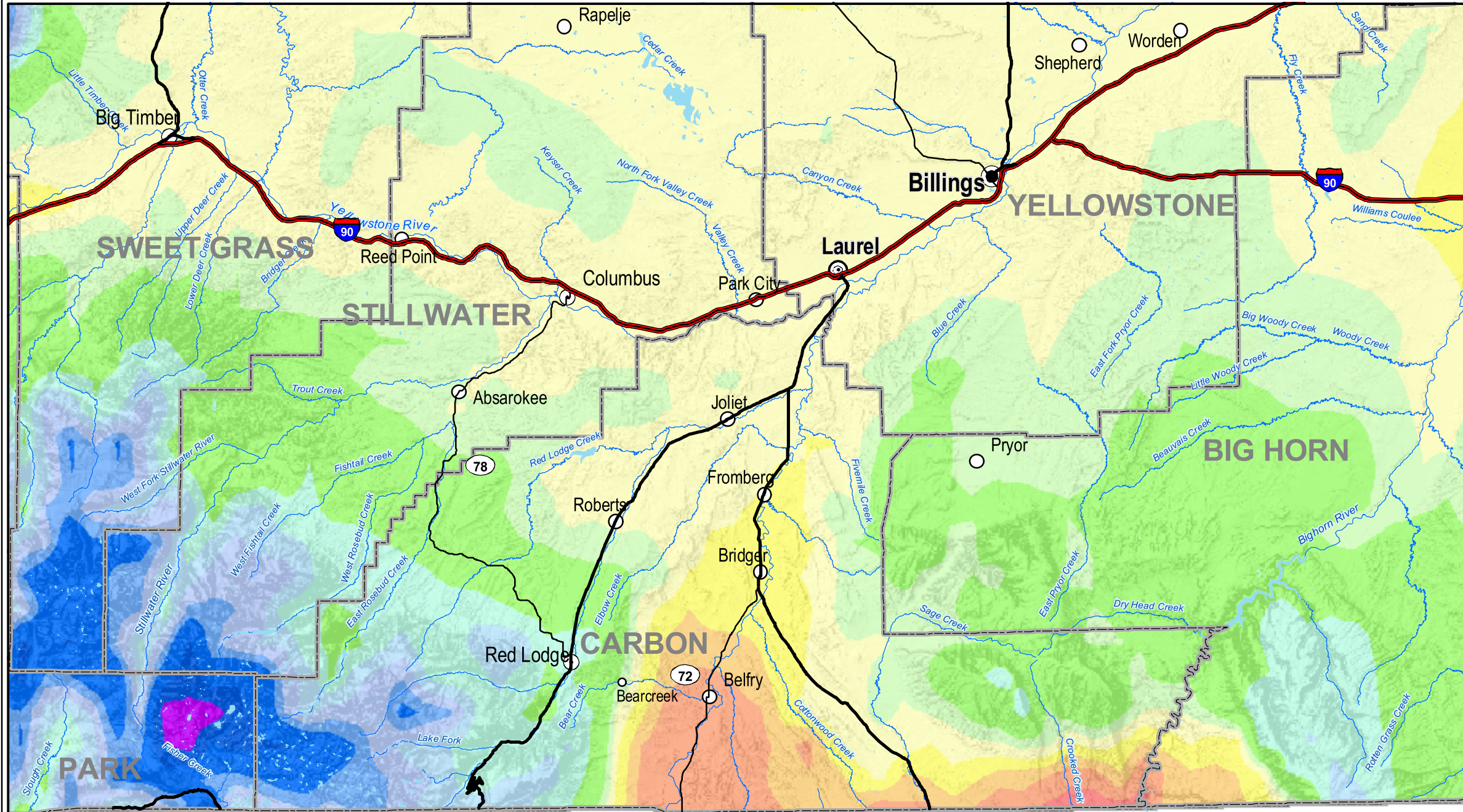


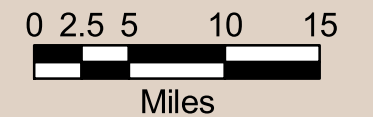
CARBON

Average Annual Precipitation (1961 - 1990)



| Ave. Inches/Year | |
|------------------|---------|
| 0-8 | 32-36 |
| 8-10 | 36-40 |
| 10-12 | 40-50 |
| 12-14 | 50-60 |
| 14-16 | 60-70 |
| 16-18 | 70-80 |
| 18-20 | 80-90 |
| 20-24 | 90-100 |
| 24-28 | 100-110 |
| 28-32 | 110-120 |
| | 120-130 |

NRCS National Water and Climate Center (NWCC) and the Spatial Climate Analysis Service (SCAS) at Oregon State University (OSU), developers of PRISM (the Parameter-elevation Regressions on Independent Slopes Model). PRISM is an analytical tool that uses point data, a digital elevation model, and other spatial data sets to generate gridded estimates of monthly, yearly, and event-based climatic parameters, such as precipitation, temperature, snowfall, degree days, and dew point. These data shown here are the Average Annual Precipitation for a 30 year period 1961 - 1990 for Montana. <http://www.wcc.nrcs.usda.gov/climate/prism.html>



1:640,000

