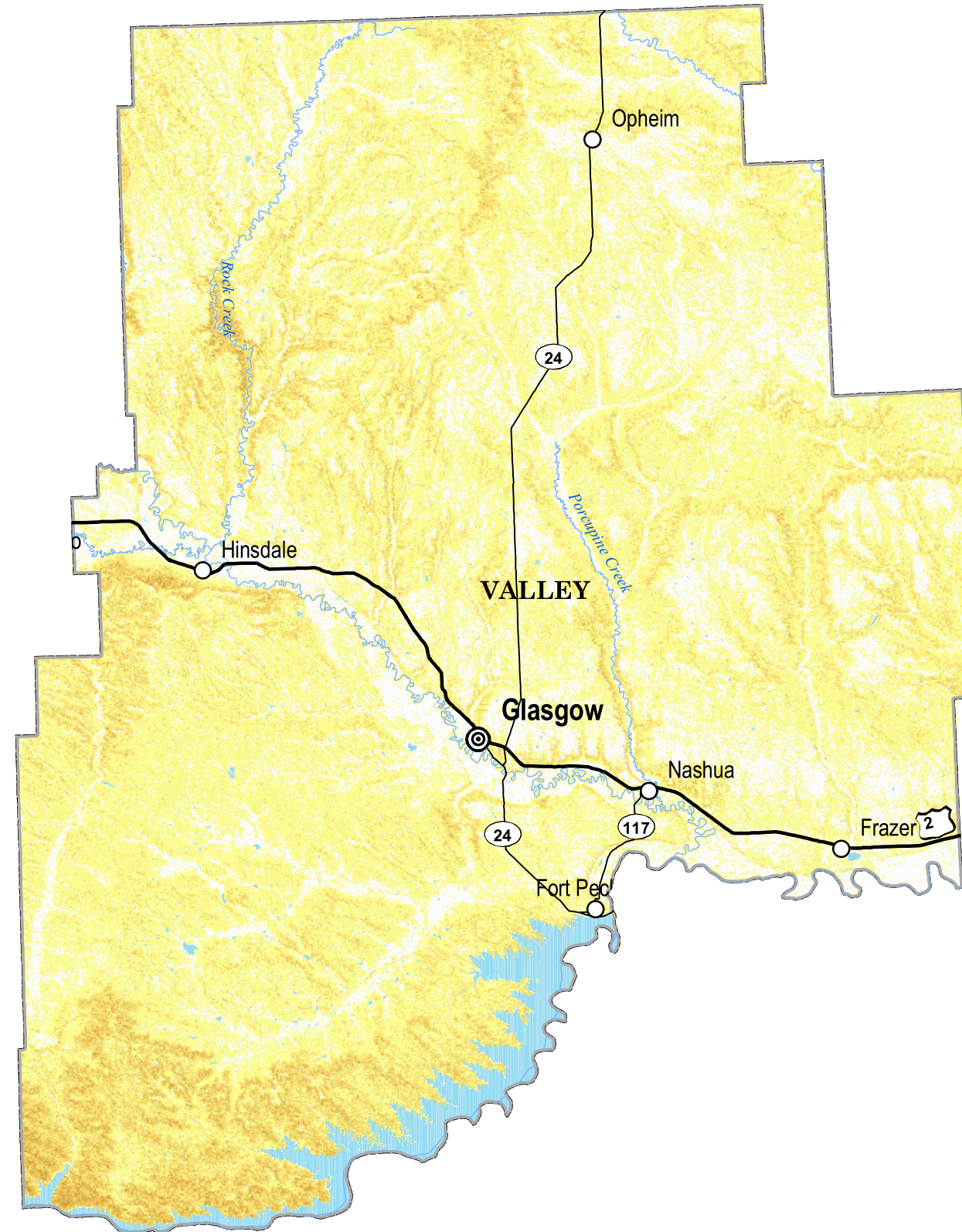


# VALLEY

# Slopes Derived from USGS NED



| Population          | Degree of Slope |
|---------------------|-----------------|
| ○ Under 50          | 0 < X ≤ 4       |
| ○ 51 - 1000         | 4 < X ≤ 10      |
| ○ 1001 - 2500       | 10 < X ≤ 30     |
| ⊙ 2501 - 10000      | 30 < X ≤ 45     |
| ⊙ Over 10,000       | 45 < X ≤ 60     |
| — Interstate        | 60 < X ≤ 90     |
| — U.S. Route        | Flat            |
| — Secondary         |                 |
| — Montana Ro        |                 |
| — Rivers            |                 |
| — Lake or Reservoir |                 |

The USGS National Elevation Dataset (NED) has been developed by merging the highest-resolution, best-quality elevation data available across the United States into a seamless raster format. NED is the result of the maturation of the USGS effort to provide 1:24,000-scale Digital Elevation Model (DEM) data for the conterminous US.

