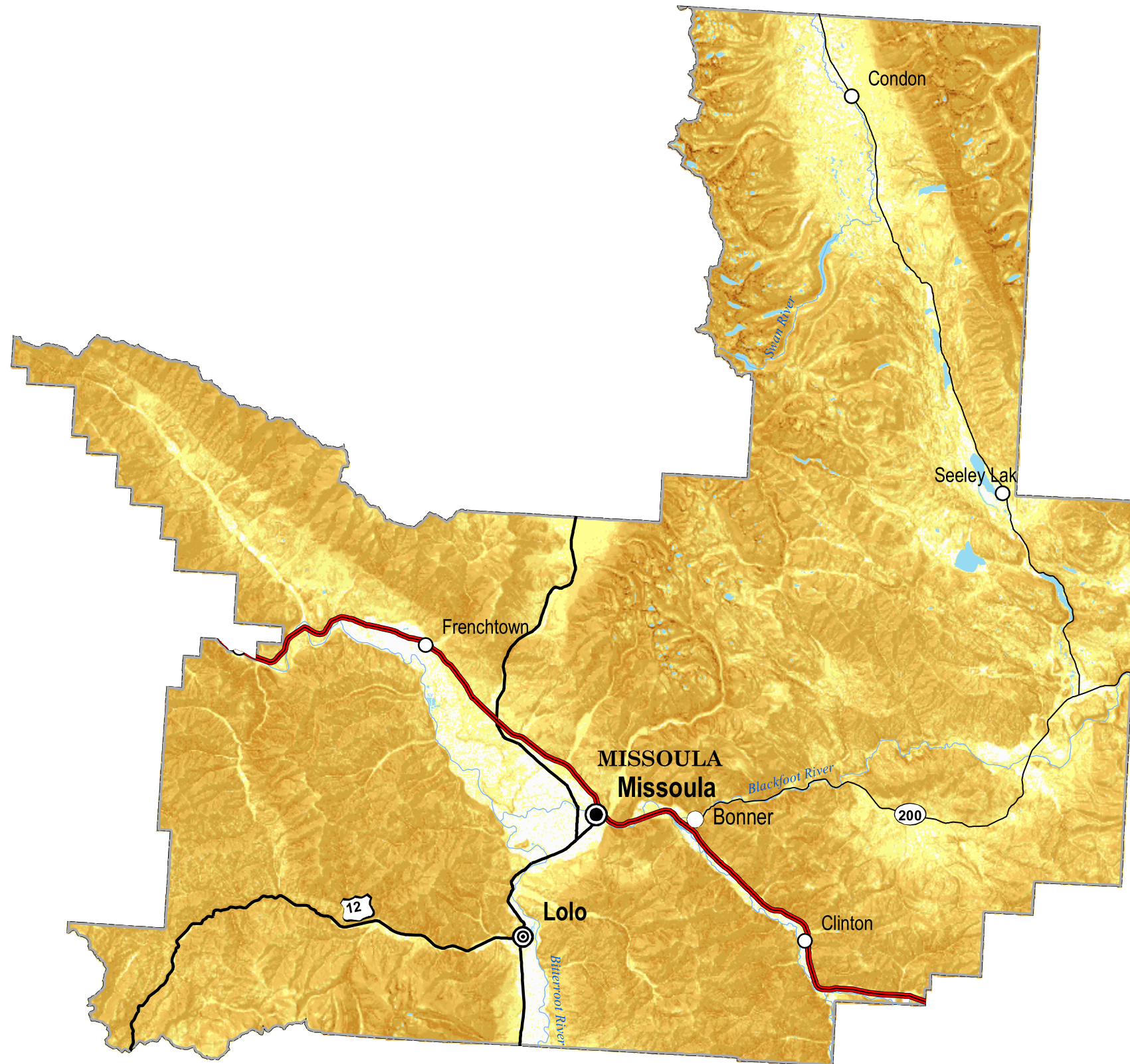


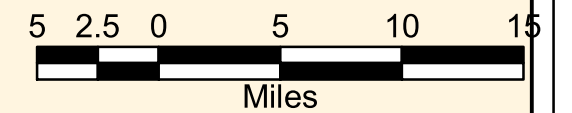
MISSOULA

Slopes Derived from USGS NED



| Population | Degree of Slope |
|---------------------|-----------------|
| ○ Under 50 | 0 < X <= 4 |
| ○ 51 - 1000 | 4 < X <= 10 |
| ○ 1001 - 2500 | 10 < X <= 30 |
| ⊙ 2501 - 10000 | 30 < X <= 45 |
| ⊙ Over 10,000 | 45 < X <= 60 |
| — Interstate | 60 < X <= 90 |
| — U.S. Route | Flat |
| — Secondary | |
| — Montana Ro | |
| — Rivers | |
| — Lake or Reservoir | |

The USGS National Elevation Dataset (NED) has been developed by merging the highest-resolution, best-quality elevation data available across the United States into a seamless raster format. NED is the result of the maturation of the USGS effort to provide 1:24,000-scale Digital Elevation Model (DEM) data for the conterminous US.



1:500,000

