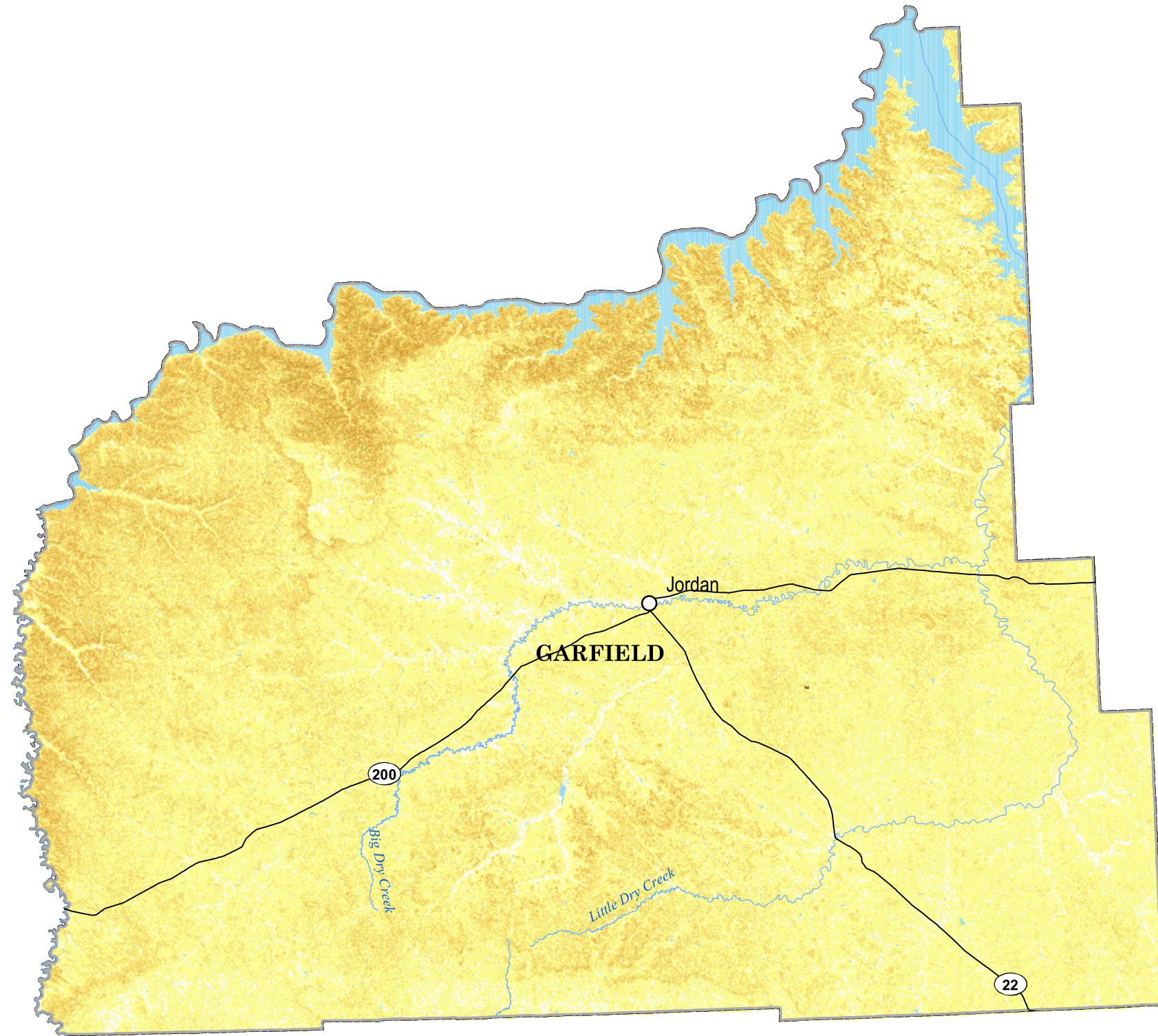


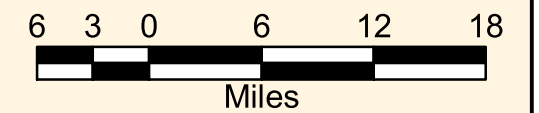
GARFIELD

Slopes Derived from USGS NED



Population	Degree of Slope
○ Under 50	0 < X ≤ 4
○ 51 - 1000	4 < X ≤ 10
○ 1001 - 2500	10 < X ≤ 30
⊙ 2501 - 10000	30 < X ≤ 45
⊙ Over 10,000	45 < X ≤ 60
— Interstate	60 < X ≤ 90
— U.S. Route	Flat
— Secondary	
— Montana Ro	
— Rivers	
— Lake or Reservoir	

The USGS National Elevation Dataset (NED) has been developed by merging the highest-resolution, best-quality elevation data available across the United States into a seamless raster format. NED is the result of the maturation of the USGS effort to provide 1:24,000-scale Digital Elevation Model (DEM) data for the conterminous US.



1:650,000

