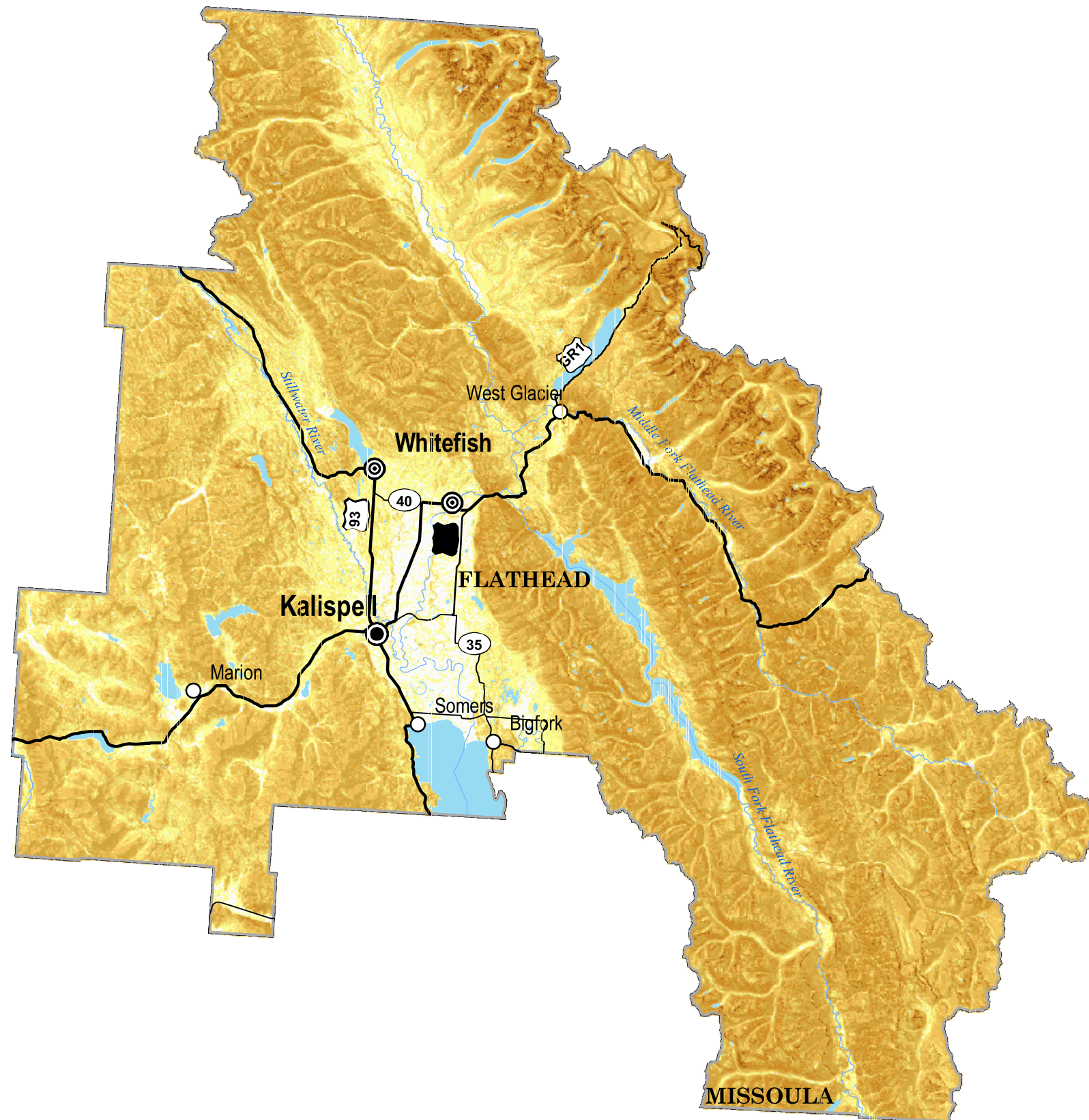


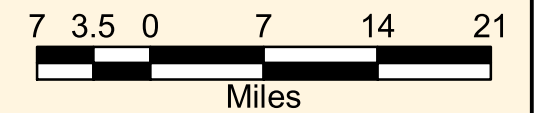
FLATHEAD

Slopes Derived from USGS NED



Population	Degree of Slope
○ Under 50	0 < X <= 4
○ 51 - 1000	4 < X <= 10
○ 1001 - 2500	10 < X <= 30
⊙ 2501 - 10000	30 < X <= 45
⊙ Over 10,000	45 < X <= 60
— Interstate	60 < X <= 90
— U.S. Route	Flat
— Secondary	
— Montana Ro	
— Rivers	
— Lake or Reservoir	

The USGS National Elevation Dataset (NED) has been developed by merging the highest-resolution, best-quality elevation data available across the United States into a seamless raster format. NED is the result of the maturation of the USGS effort to provide 1:24,000-scale Digital Elevation Model (DEM) data for the conterminous US.



1:750,000

