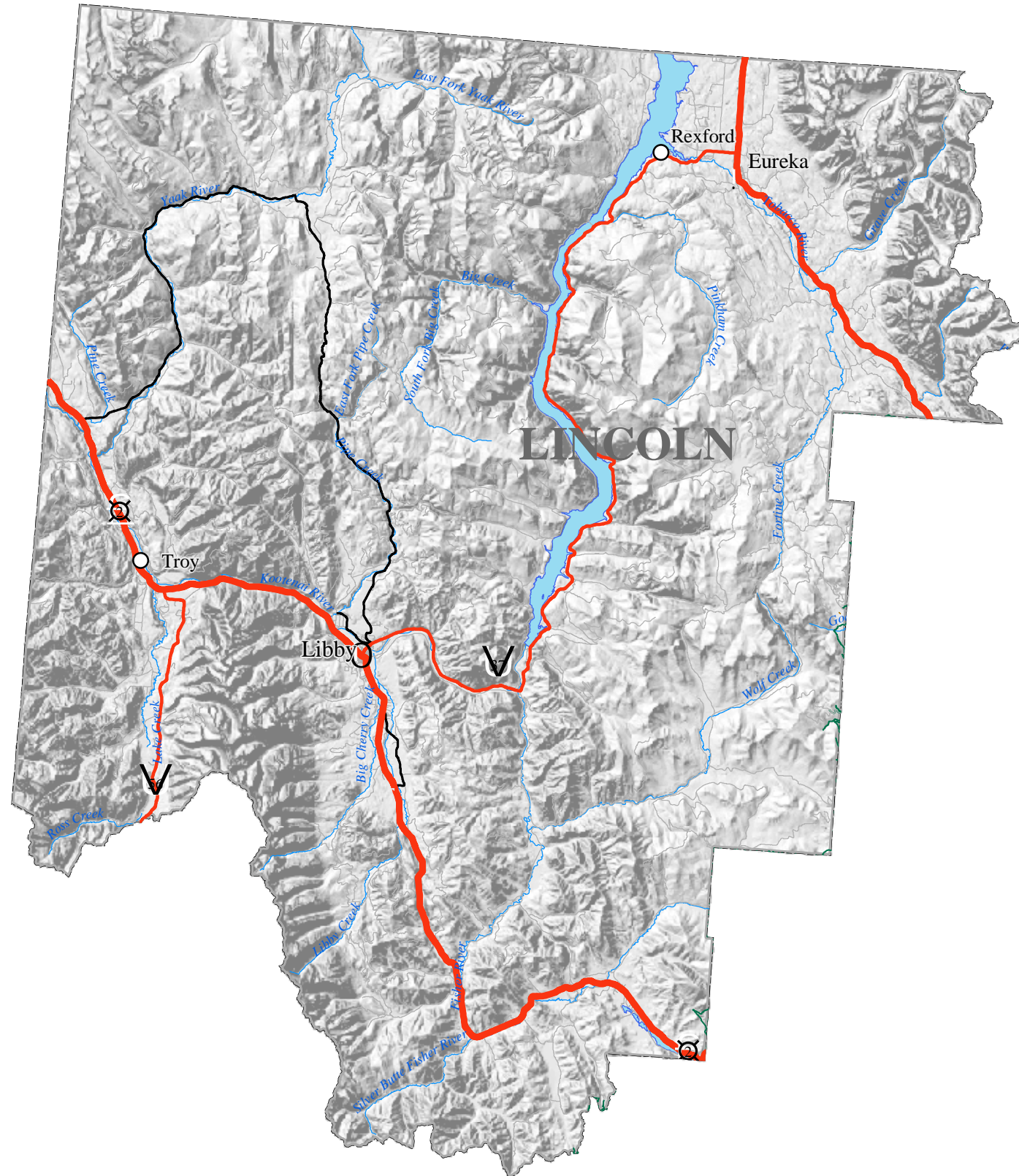


LINCOLN COUNTY

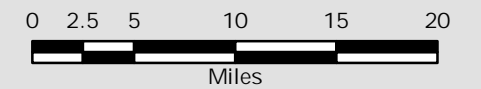


TRANSPORTATION FRAMEWORK ROAD SYSTEM

- National Highway System INTERSTATE
- NHS NON-INTERSTATE
- PRIMARY HIGHWAY
- SECONDARY HIGHWAY
- CITY-COUNTY ROAD
- URBAN ROAD
- PRIVATE ROAD
- USFS ROAD

CITY POPULATION

- Under 50
- 51 - 1000
- 1001 - 2500
- 2501 - 10000
- Over 10,000



Miles

1:600,000

Transportation Framework dataset is a dynamic data theme. This dataset was created by taking a "federated" approach to the creation and maintenance of the data. Data are collected and maintained by the appropriate jurisdictional organizations and then contributed to the dataset maintained by the GIS Bureau of the Information and Technology Services Division of the Department of Administration. The data are inspected and standardized for integration into one seamless statewide roads layer. <http://giscoordination.mt.gov/transportation/msdi.asp>

