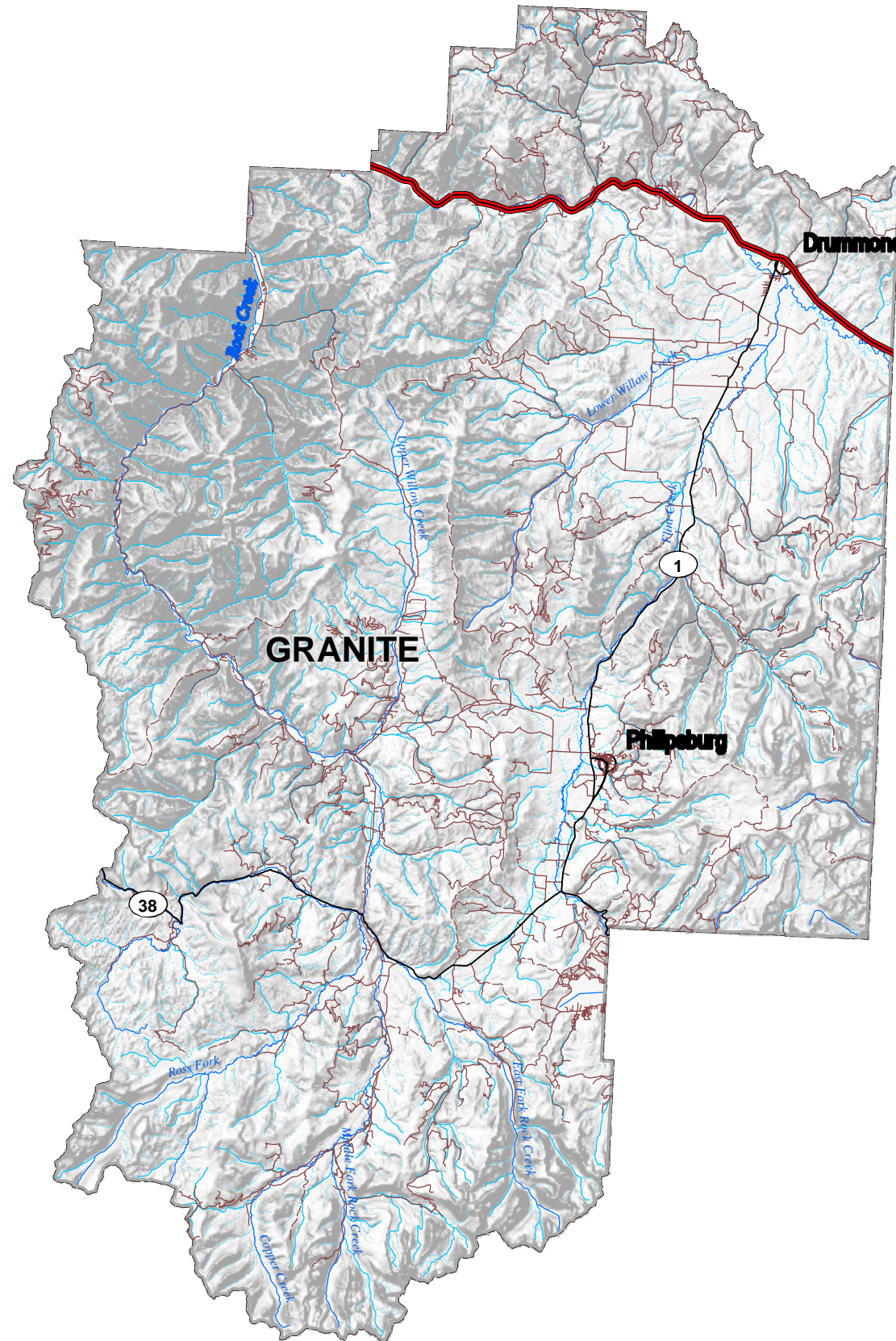


GRANITE

County-Maps-Roads



Road Type

- Interstate
- U.S. Route
- Secondary
- Montana Route

CFCC

- Street or County Road
- Trail or Other
- Major River
- River
- Stream or Creek
- Intermittent Creek
- Lake & Reservoir
- STATE

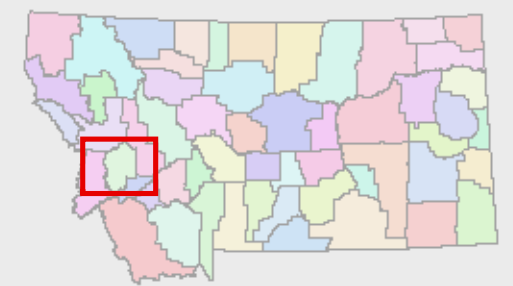
3 1.50 3



Miles

1:450,000

Roads from US Census TIGER files year 2000
Scale of data; appropriate for 1:100,000 scale.



County-Maps-Roads.mxd