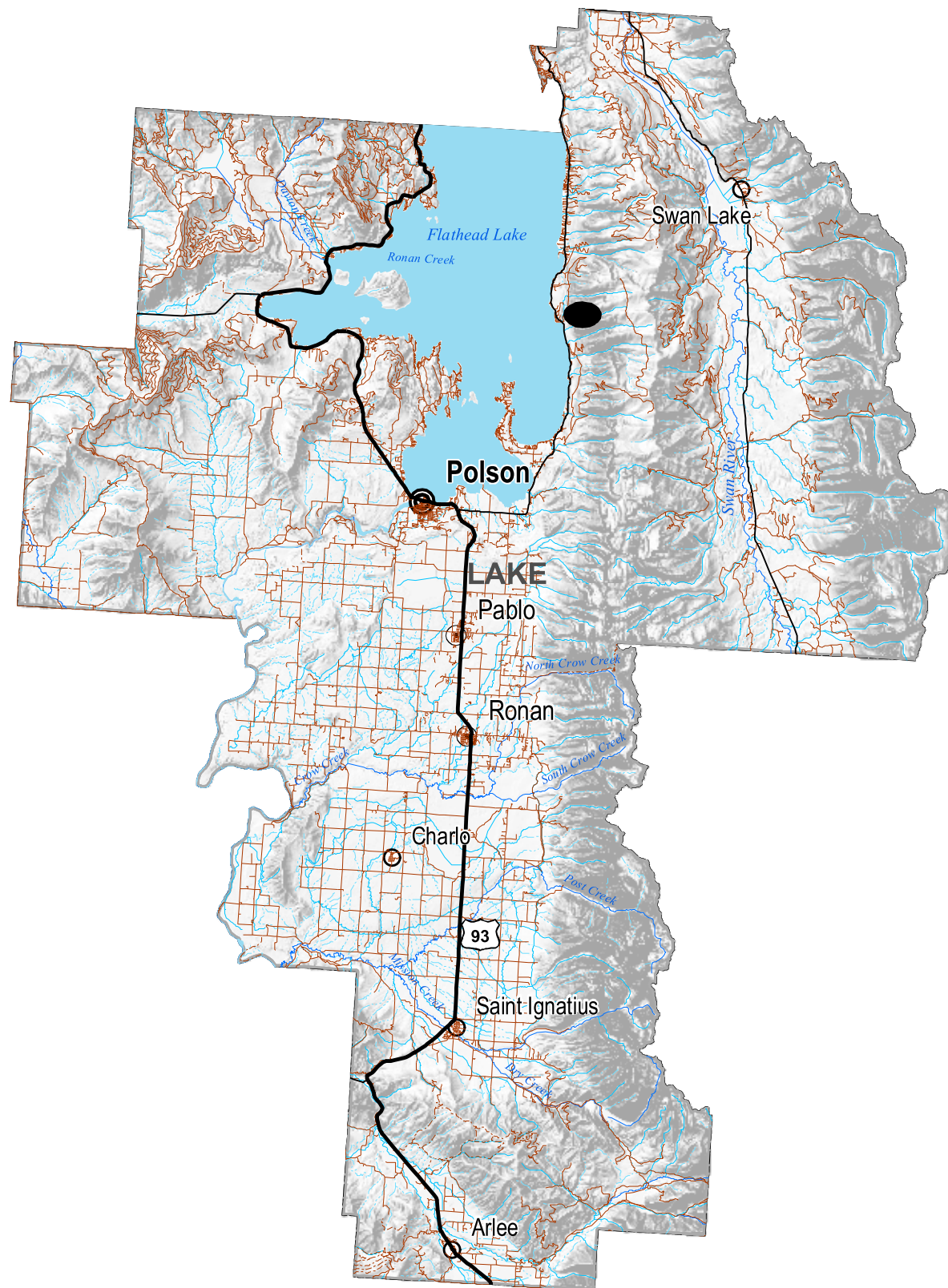


LAKE

County-Maps-Roads



- Road Type**
- Interstate
 - U.S. Route
 - Secondary
 - Montana Route
 - Street or County Road
 - - - Trail
- CITY or TOWN**
- Population**
- Under 50
 - 51 - 1000
 - 1001 - 2500
 - ⊙ 2501 - 10000
 - Over 10,000
- Major River
 - River
 - Stream or Creek
 - Intermittent Creek
 - Lake & Reservoir



Miles

1:480,000

Roads from US Census TIGER files year 2000
Scale of data; appropriate for 1:100,000 scale.

