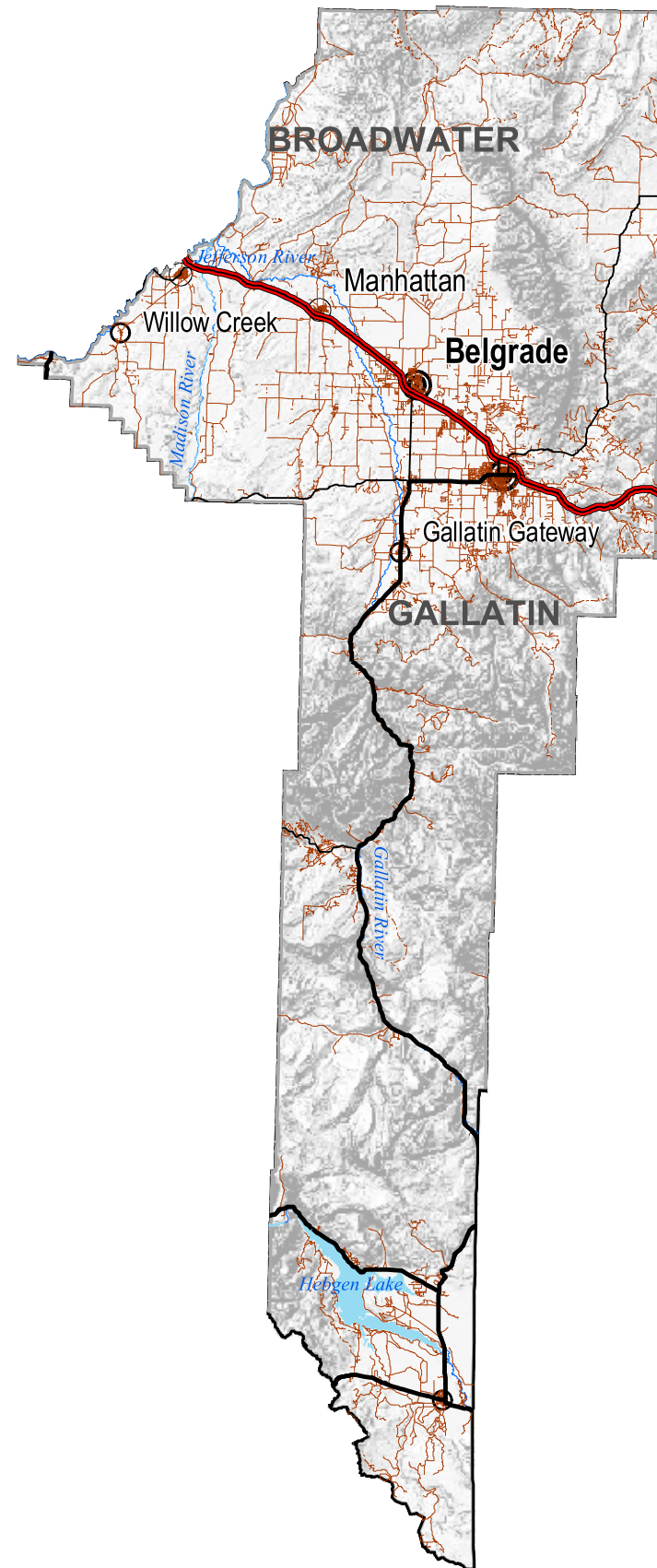


GALLATIN

County-Maps-Roads



Road Type

- Interstate
- U.S. Route
- Secondary
- Montana Route
- Street or County Road
- - - Trail

CITY or TOWN

Population

- Under 50
- 51 - 1000
- 1001 - 2500
- ⊙ 2501 - 10000
- ⊙ Over 10,000

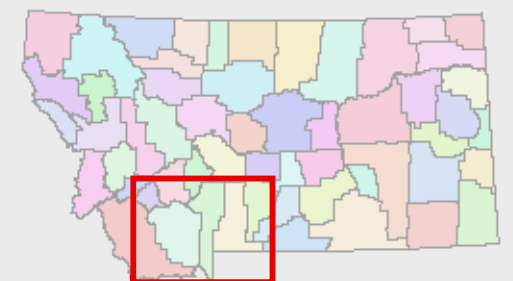
- Major River
- Lake & Reservoir



Miles

1:850,000

Roads from US Census TIGER files year 2000
Scale of data; appropriate for 1:100,000 scale.



County-Maps-Roads.mxd