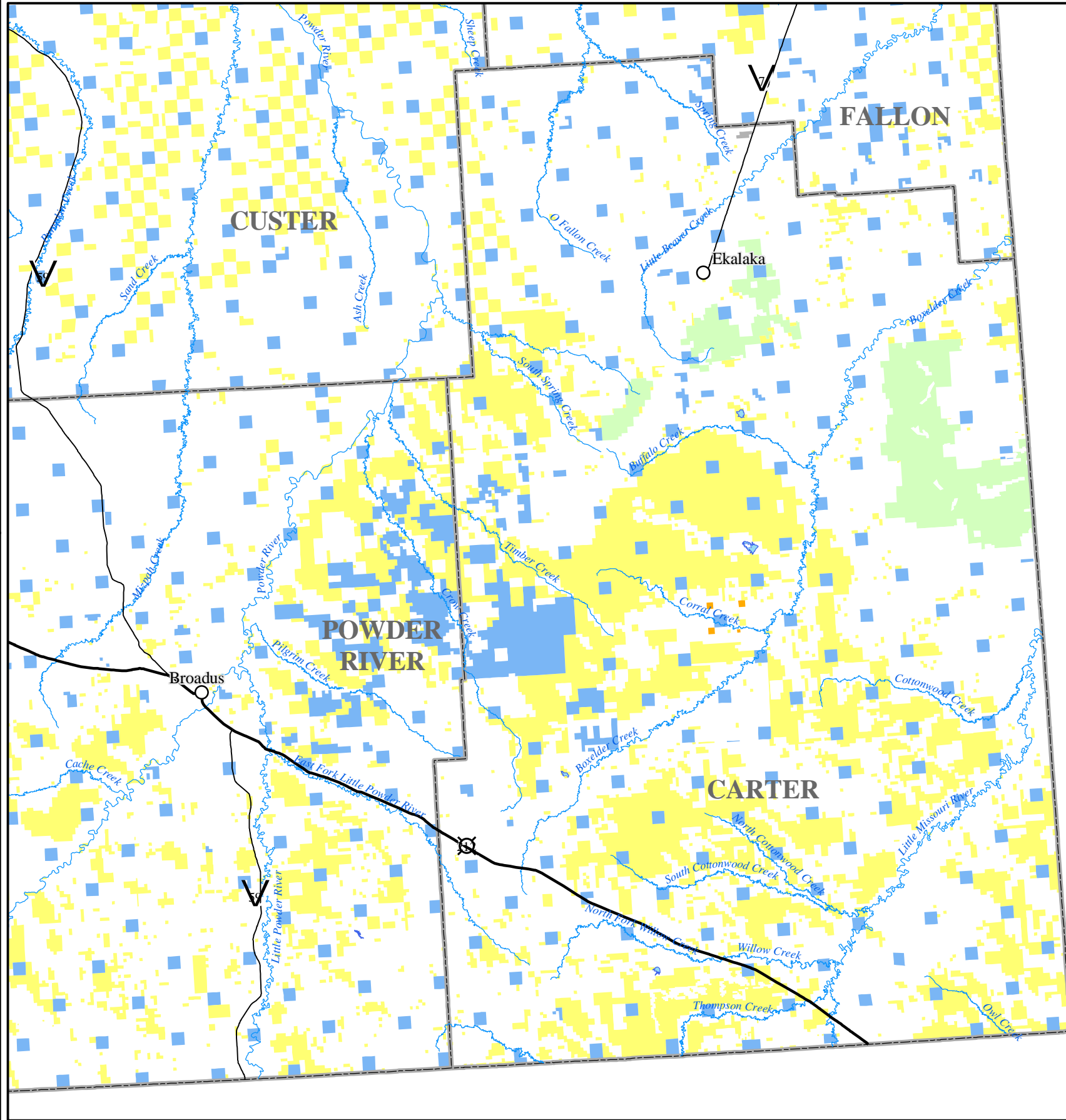


CARTER COUNTY

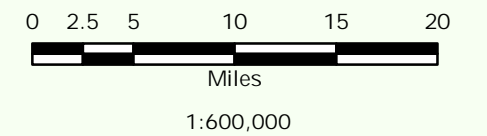


LAND OWNERSHIP

- US Bureau of Land Management
- US Bureau of Reclamation
- US Fish & Wildlife Service
- US National Park Service
- US Forest Service
- US Dept of Agriculture Wilderness
- US Army Corps of Engineers
- US Department of Defense
- Montana State Land
- MT Fish Wildlife & Parks
- Other Montana State Lands
- City or County Government
- US Bureau of Indian Affairs
- Native American Tribal Lands
- Private
- Plum Creek Timber Corporation
- Private Land Trust
- Water

CITY POPULATION

- Under 50
- 51 - 1000
- 1001 - 2500
- 2501 - 10000
- Over 10,000



Ownership - stewardship is a dataset initially created by University of Montana during the GAP analysis project. Currently maintained and updated by the Montana Natural Heritage Program, at the Montana State Library. The intention being the display of land status information on a statewide basis, not specific parcel ownership. Created for use at 1:100,000 scale.

