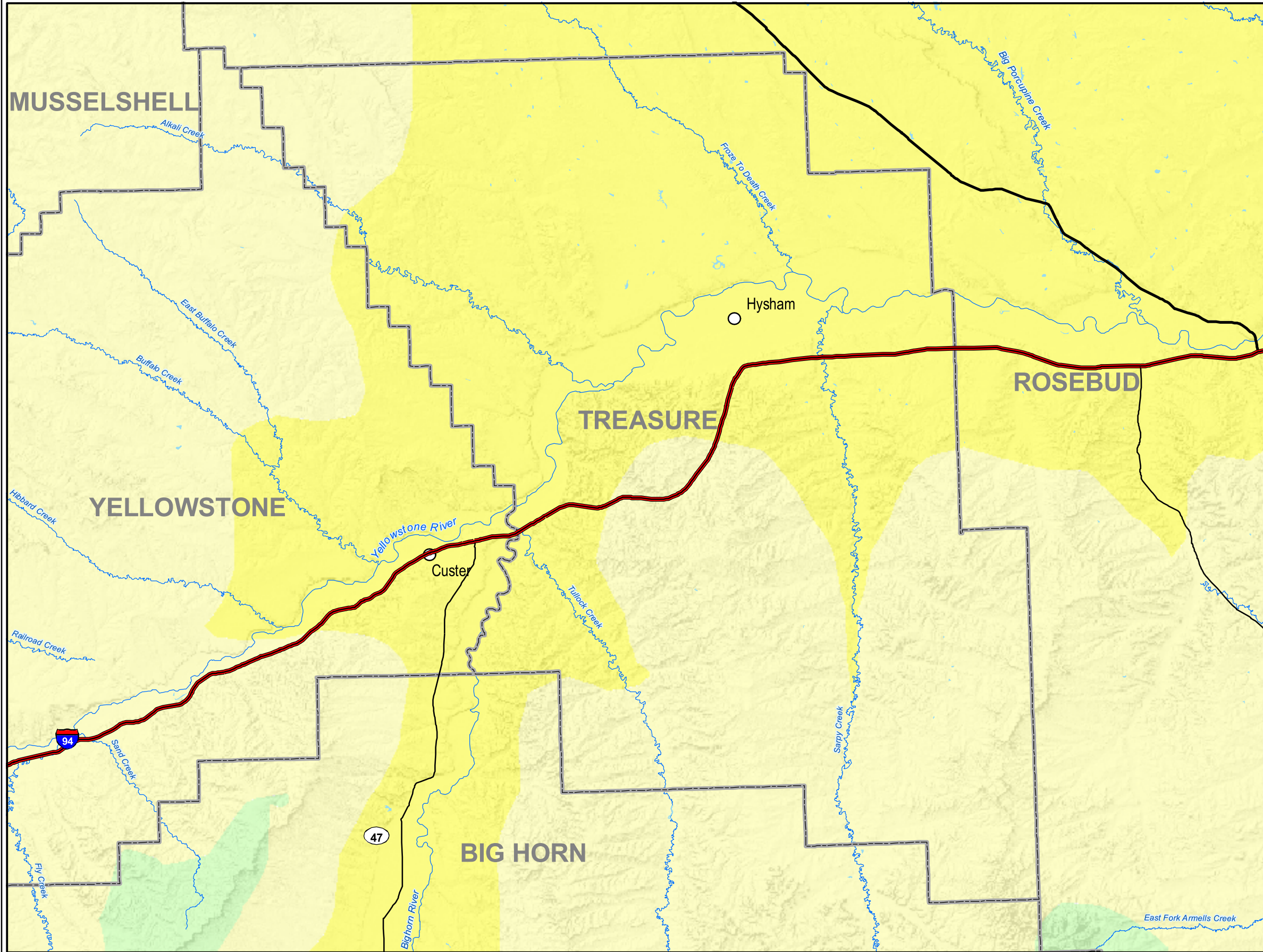


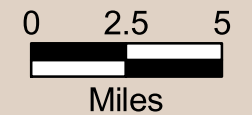
# TREASURE

# Average Annual Precipitation (1961 - 1990)



Ave. Inches/Year	
0-8	32-36
8-10	36-40
10-12	40-50
12-14	50-60
14-16	60-70
16-18	70-80
18-20	80-90
20-24	90-100
24-28	100-110
28-32	110-120
	120-130

NRCS National Water and Climate Center (NWCC) and the Spatial Climate Analysis Service (SCAS) at Oregon State University (OSU), developers of PRISM (the Parameter-elevation Regressions on Independent Slopes Model). PRISM is an analytical tool that uses point data, a digital elevation model, and other spatial data sets to generate gridded estimates of monthly, yearly, and event-based climatic parameters, such as precipitation, temperature, snowfall, degree days, and dew point. These data shown here are the Average Annual Precipitation for a 30 year period 1961 - 1990 for Montana. <http://www.wcc.nrcs.usda.gov/climate/prism.html>



1:320,000

