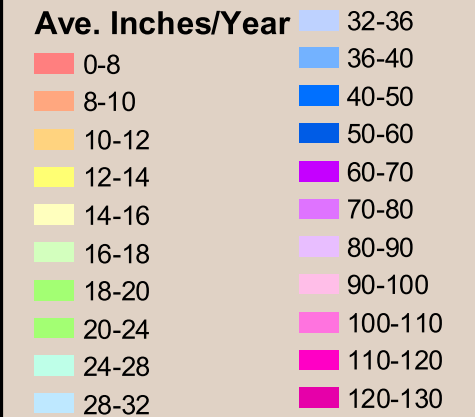
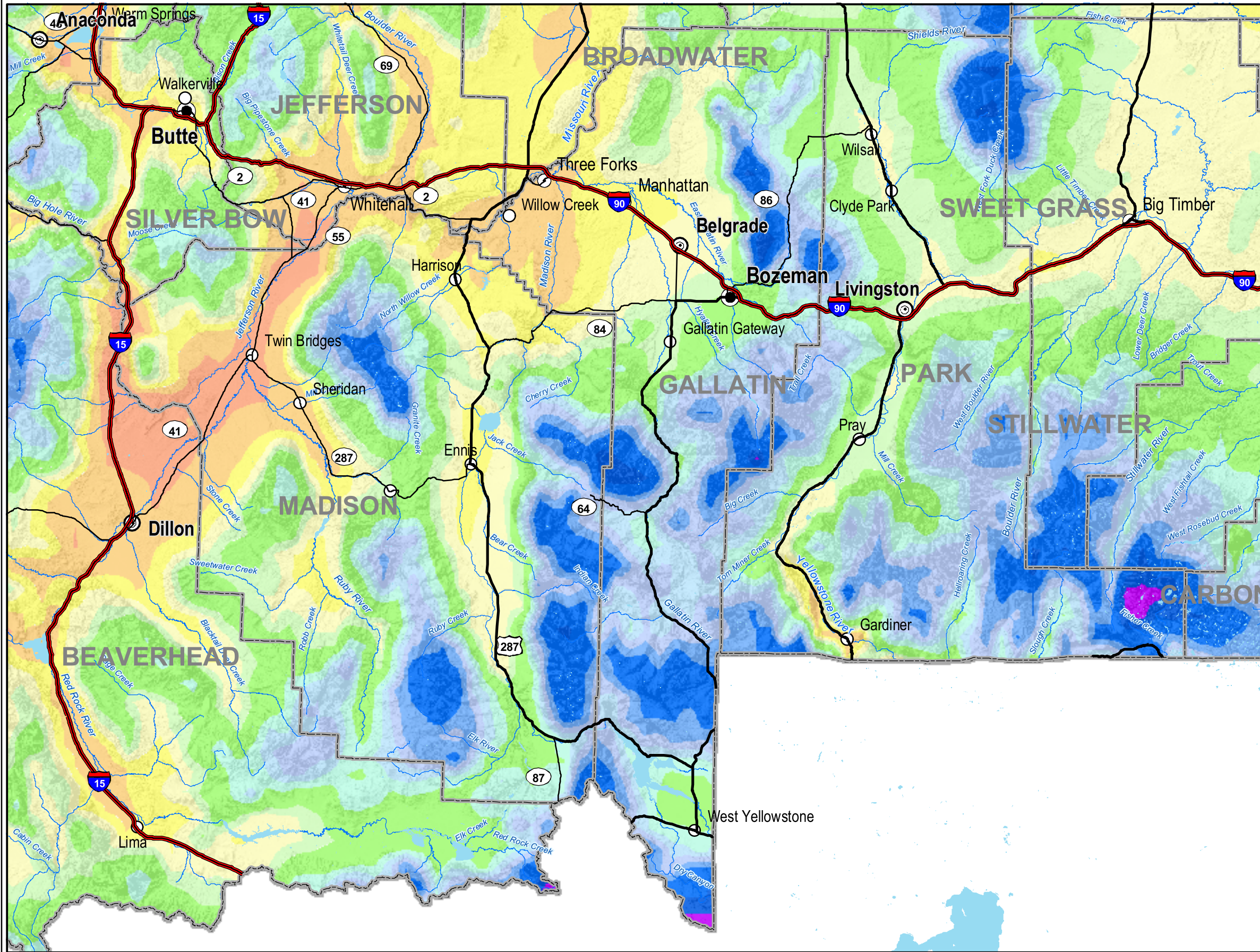


# GALLATIN

# Average Annual Precipitation (1961 - 1990)



NRCS National Water and Climate Center (NWCC) and the Spatial Climate Analysis Service (SCAS) at Oregon State University (OSU), developers of PRISM (the Parameter-elevation Regressions on Independent Slopes Model). PRISM is an analytical tool that uses point data, a digital elevation model, and other spatial data sets to generate gridded estimates of monthly, yearly, and event-based climatic parameters, such as precipitation, temperature, snowfall, degree days, and dew point. These data shown here are the Average Annual Precipitation for a 30 year period 1961 - 1990 for Montana. <http://www.wcc.nrcs.usda.gov/climate/prism.html>

