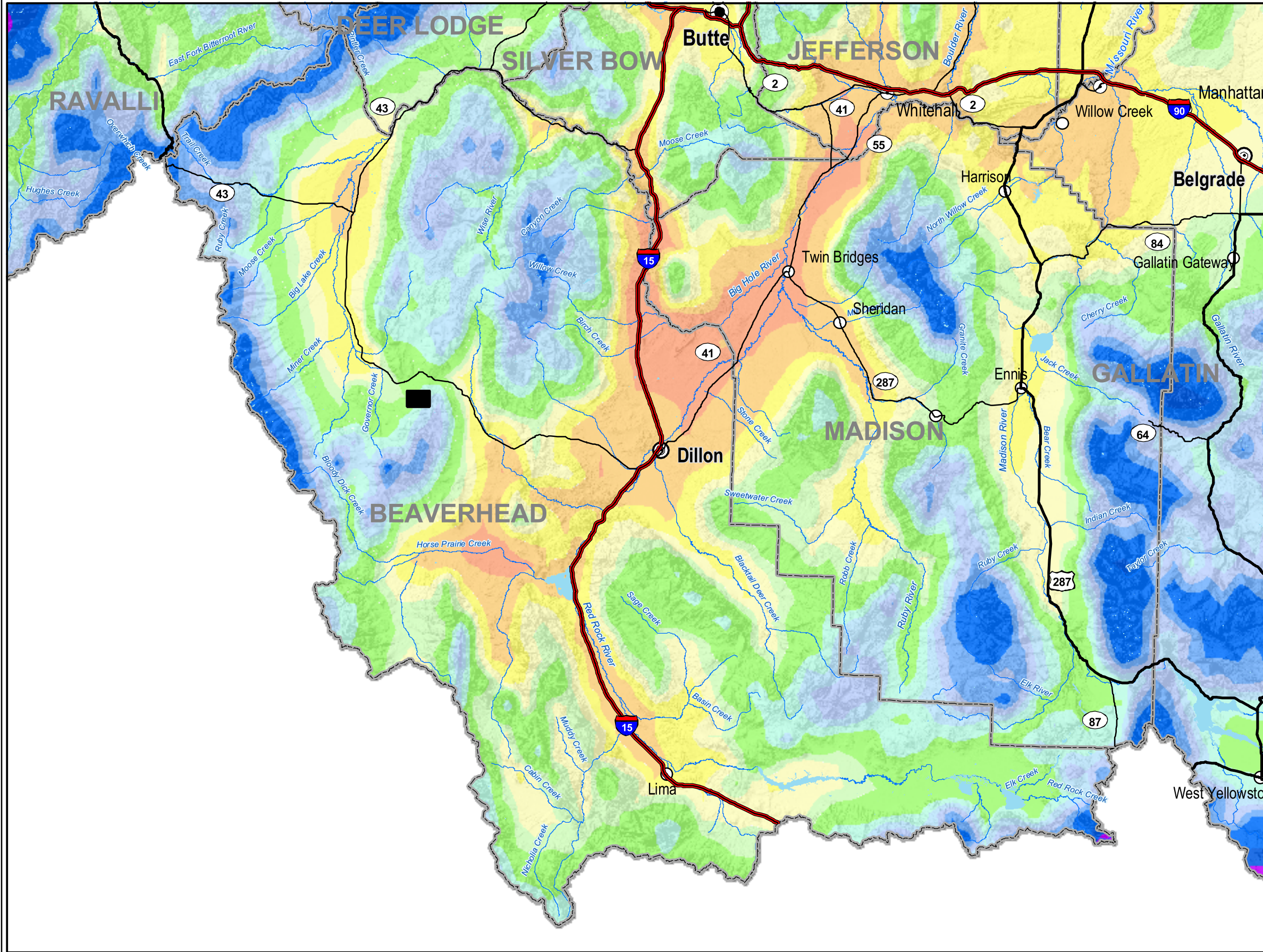


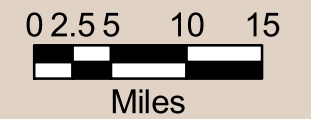
# BEAVERHEAD

# Average Annual Precipitation (1961 - 1990)



| Ave. Inches/Year |         |
|------------------|---------|
| 0-8              | 32-36   |
| 8-10             | 36-40   |
| 10-12            | 40-50   |
| 12-14            | 50-60   |
| 14-16            | 60-70   |
| 16-18            | 70-80   |
| 18-20            | 80-90   |
| 20-24            | 90-100  |
| 24-28            | 100-110 |
| 28-32            | 110-120 |
|                  | 120-130 |

NRCS National Water and Climate Center (NWCC) and the Spatial Climate Analysis Service (SCAS) at Oregon State University (OSU), developers of PRISM (the Parameter-elevation Regressions on Independent Slopes Model). PRISM is an analytical tool that uses point data, a digital elevation model, and other spatial data sets to generate gridded estimates of monthly, yearly, and event-based climatic parameters, such as precipitation, temperature, snowfall, degree days, and dew point. These data shown here are the Average Annual Precipitation for a 30 year period 1961 - 1990 for Montana. <http://www.wcc.nrcs.usda.gov/climate/prism.html>



1:800,000

