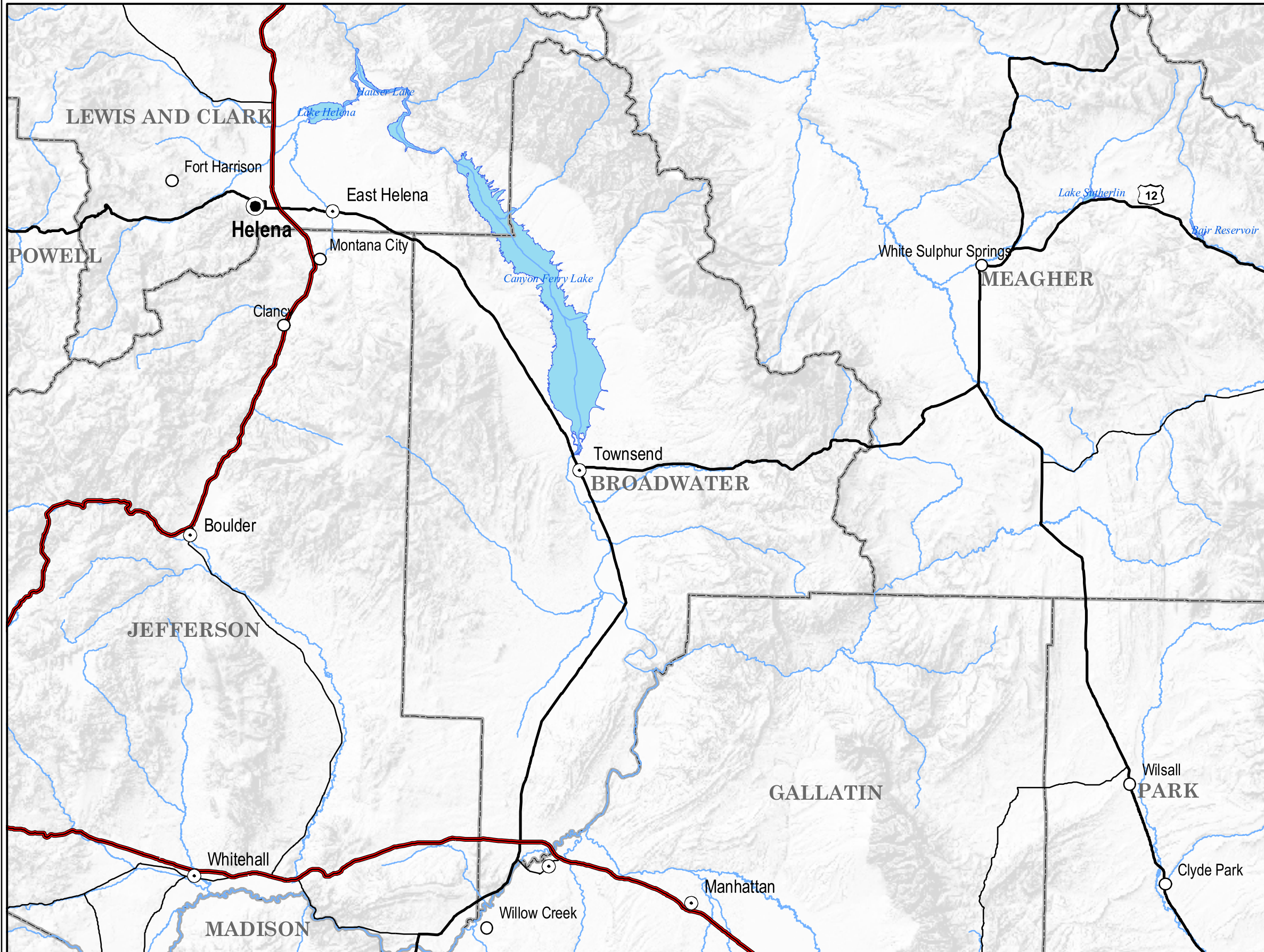


BROADWATER

Cities and Towns



- POPULATION**
- Under 50
 - 51 - 1000
 - 1001 - 2500
 - ⊙ 2501 - 10000
 - Over 10,000
- Interstate
— U.S. Route
— Secondary Route
— Montana Route
— Rivers
— Lakes & Reservoirs

Cities and Towns from the US Census files and USGS Geographic Names dataset. Population estimates based on 2000 census blocks and tracts information. Roads from US Census TIGER files 2000. Lakes and Rivers from USGS National Hydrography dataset.

