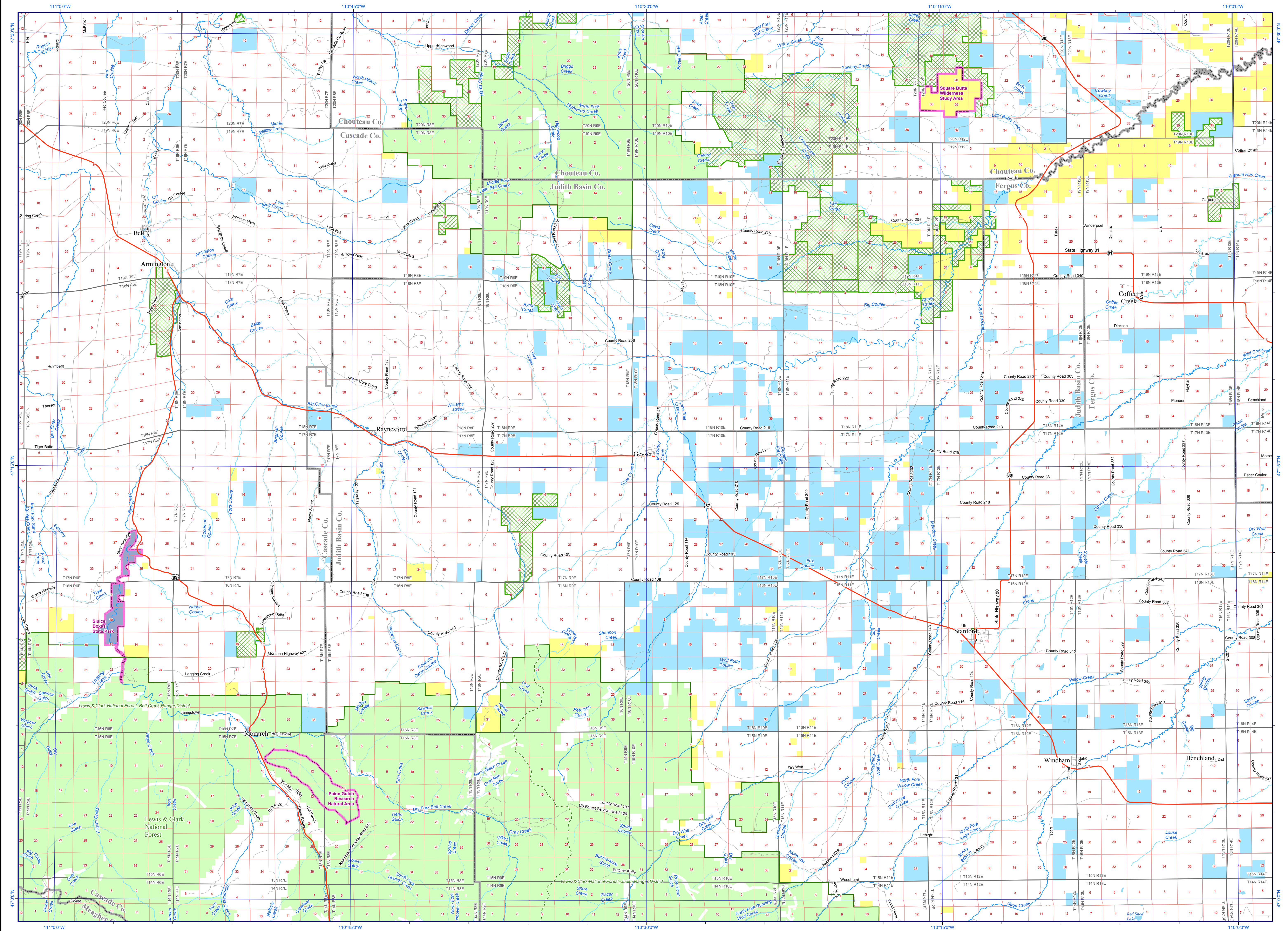


BELT



Public Lands		Management		Township/Range	
	US Bureau of Land Management		National Forest Boundary		Section
	US Forest Service		USFS Ranger District		County
	US Fish and Wildlife Service		BLM Wilderness Area		Interstate
	US National Park Service		USFS Wilderness Area		US or State Route
	Other Federal Land		FWS Wilderness Area		Secondary
	Slate Trust Land		Tribal Wilderness Area		Local Road
	Montana Fish, Wildlife and Parks		Tribal Reservations		
	Other State Land		Managed Areas		
	Local Government		Private Conservation Lands		
			Conservation Easements		

PLEASE READ
 Land management features shown on this map are not intended as a legal depiction of public or private surface land ownership boundaries and should not be used in place of a survey conducted by a licensed land surveyor.

Map features, including conservation easements, do not imply public access to any lands.

Not all legend items may appear on this map.

The land status data displayed in this map viewer may not be complete and may contain errors in boundary locations and/or coding. The Montana Natural Heritage Program makes no representations or warranties whatsoever with respect to the accuracy or completeness of the data contained in this map and assumes no responsibility for the suitability of the data for a particular purpose. The Montana Natural Heritage Program will not be liable for any damages incurred as a result of errors displayed here.

For questions about the data displayed here or to report errors, please contact the Montana Natural Heritage Program at 406-444-5354 or mtnhp@mt.gov.

SOURCE INFORMATION

This map displays land status information contained in a statewide data layer that was developed from many sources and continues to be corrected and updated.

Much of the public lands information was originally digitized by the Bureau of Land Management (BLM) from 1:100,000 scale BLM Surface Management Status maps. Additional information, corrections and updates (especially for tribal lands and private lands) were added by the University of Montana, Wildlife Spatial Analysis Unit, during 1996-1998.

Since 1998, the Montana Natural Heritage Program has made numerous updates and corrections (especially for state trust lands, Montana Fish, Wildlife & Parks areas, US Fish & Wildlife Service areas, and conservation easements). These edits are based on data supplied by the various public agencies and land trusts, and have not been verified against county or Montana Department of Revenue records.

The base scale for the data is 1:100,000, though many of the recent edits incorporate data digitized from 1:24,000 scale maps or survey data.

MONTANA Natural Heritage Program
 PO Box 201800
 1515 East 6th Avenue
 Helena, Montana 59620-1800
 406-444-5354
<http://mtnhp.org>
mtnhp@mt.gov

MONTANA Natural Resource Information System

Visit the Natural Heritage Program web site at <http://mtnhp.org>.
 July 2012

Scale 1:100,000
 1 inch equals 1.5 miles

0 0.5 1 2 3 4 5 Miles

0 0.5 1 2 3 4 5 Kilometers

Notice: This map is not intended as a legal depiction of public or private land boundaries.

