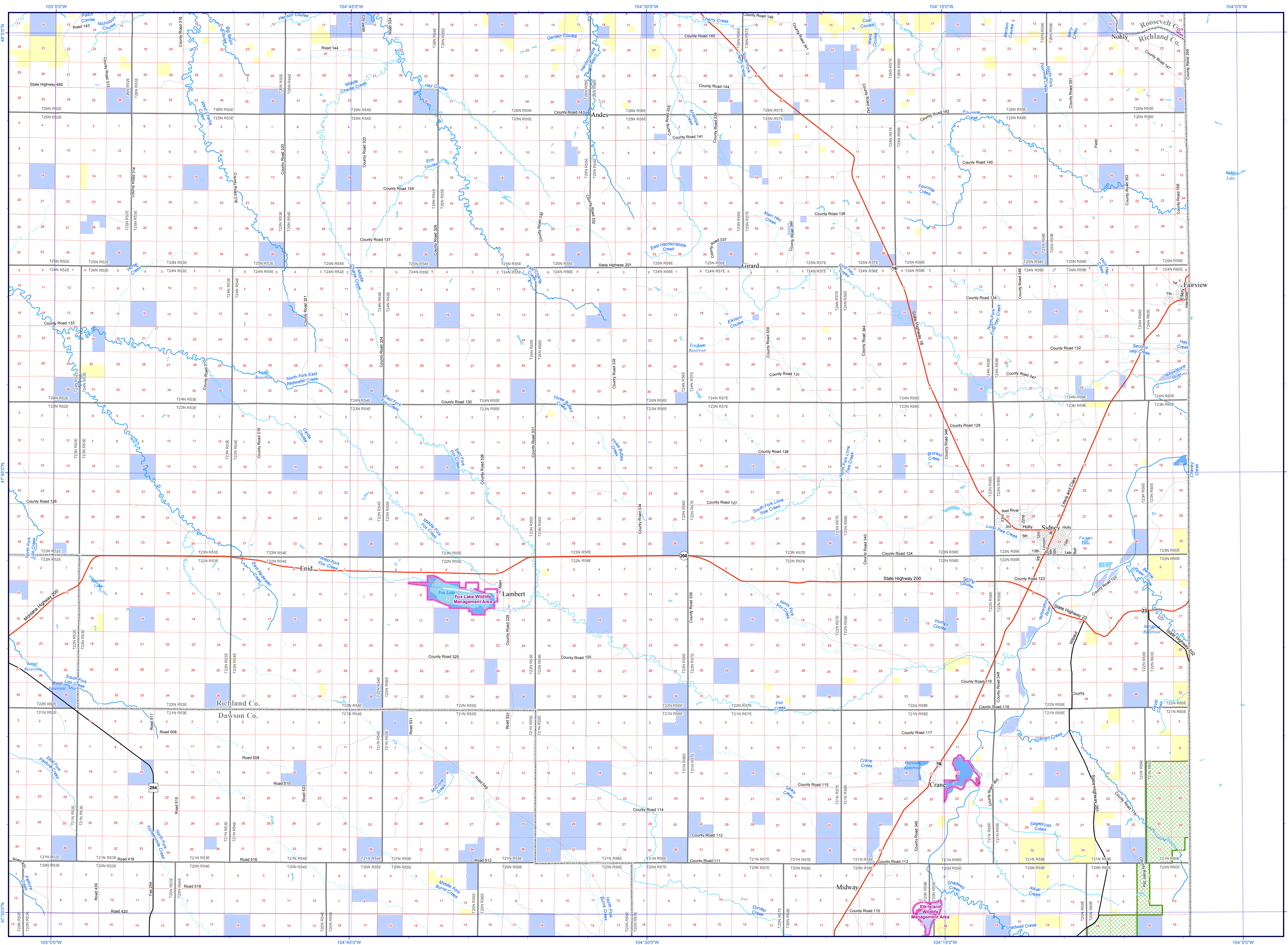


# SIDNEY



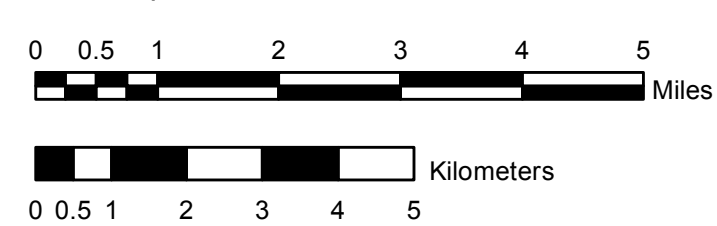
MONTANA  
**Natural Heritage Program**  
 PO Box 201800  
 1515 East 6th Avenue  
 Helena, Montana 59620-1800  
 406-444-5354  
<http://mtnhp.org>  
[mtnhp@mt.gov](mailto:mtnhp@mt.gov)



August 2010

**Scale 1:100,000**

1 inch equals 1.5 miles



**Notice: This map is not intended as a legal depiction of public or private land boundaries.**

### Ownership/Management

US Bureau of Land Management	US Department of Defense - Other	Township/Range
US Bureau of Reclamation	Montana State Trust Lands	Section
US Fish and Wildlife Service	Montana Fish, Wildlife, and Parks	County
US National Park Service	Other Montana State Lands	Interstate
US Forest Service	Montana DNRC (Water Project Lands)	US or State Route
USDA (Ag Research Stations)	Local Government	Secondary
US Army Corps of Engineers	Tribal Reservations	Local Road
National Forest Boundary	Managed Areas	
USFS Ranger District	Private Conservation Lands	
USFS Wilderness Area	Conservation Easements	

### PLEASE READ

Not all legend items may appear on this map.

Features shown on this map do not imply public access to any lands.

The land status data displayed on this map may not be complete and may contain errors in boundary locations and/or coding. The Montana Natural Heritage Program makes no representations or warranties whatsoever with respect to the accuracy or completeness of the data contained in these maps and assumes no responsibility for the suitability of these data for a particular purpose. The Montana Natural Heritage Program will not be liable for any damages incurred as a result of errors displayed here.

The ownership boundaries displayed on this map are not based on land survey data and are not a substitute for property surveys. For questions about the data displayed here or to report errors, please contact the Montana Natural Heritage Program at 406-444-5354 or [mtnhp@mt.gov](mailto:mtnhp@mt.gov).

Visit the Natural Heritage Program web site at <http://mtnhp.org>.

### SOURCE INFORMATION

This map displays land status information contained in a statewide data layer that was developed from many sources and continues to be corrected and updated.

Much of the public lands information was originally digitized by the Bureau of Land Management (BLM) from 1:100,000 scale BLM Surface Management Status maps. Additional information, corrections and updates (especially for tribal lands and private lands) were added by the University of Montana, Wildlife Spatial Analysis Unit, during 1996-1998.

Since 1998, the Montana Natural Heritage Program has made numerous updates and corrections (especially for state trust lands, Montana Fish, Wildlife & Parks areas, US Fish & Wildlife Service areas, and conservation easements). These edits are based on data supplied by the various public agencies and land trusts, and have not been verified against county or Montana Department of Revenue records.

The base scale for the data is 1:100,000, though many of the recent edits incorporate data digitized from 1:24,000 scale maps or survey data.

