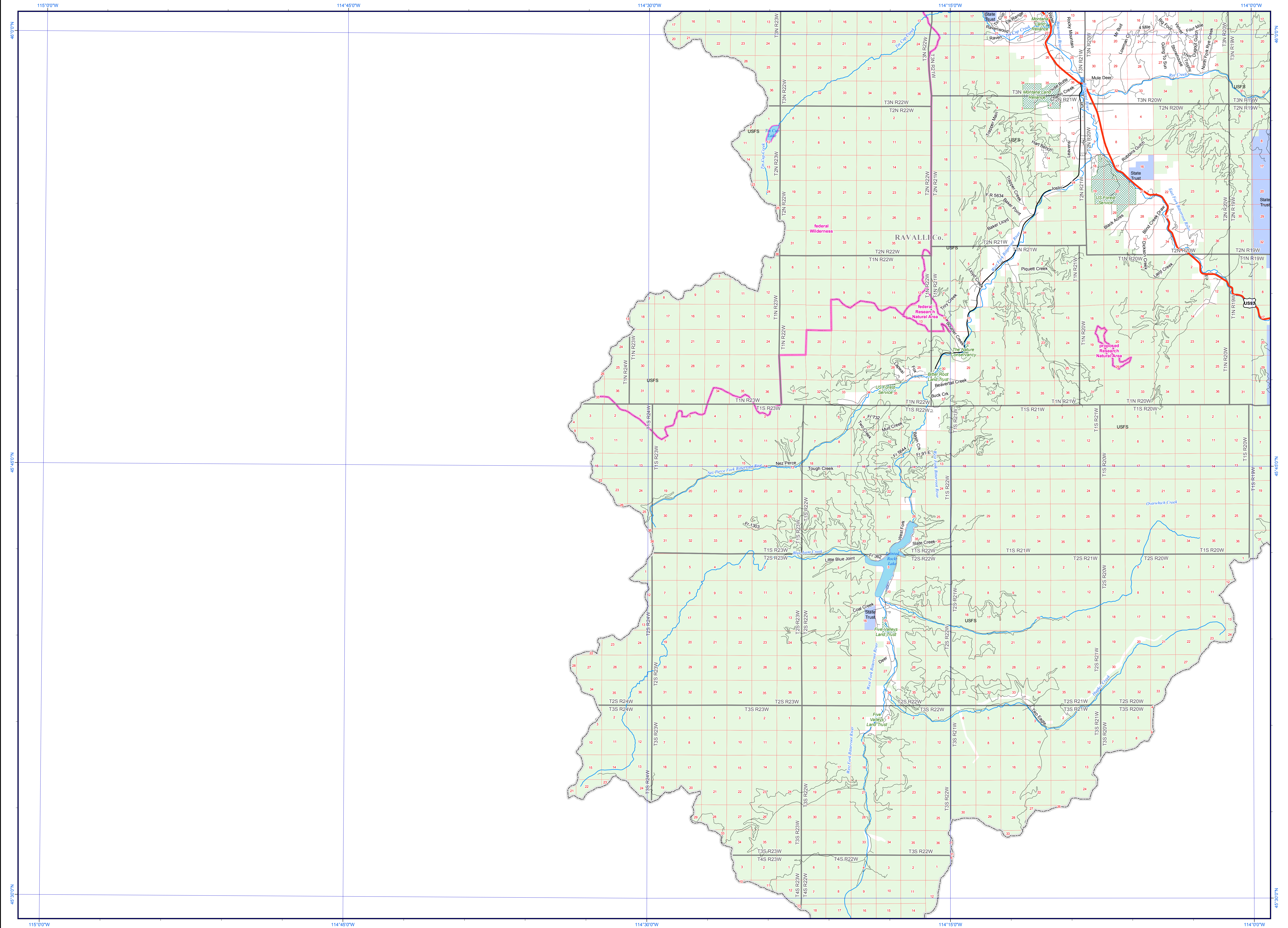
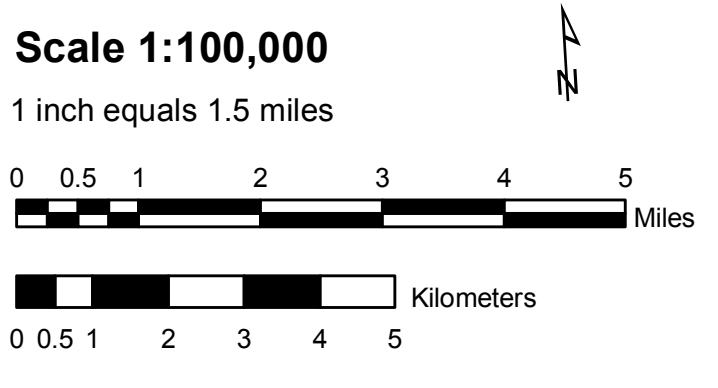


# NEZ PERCE PASS

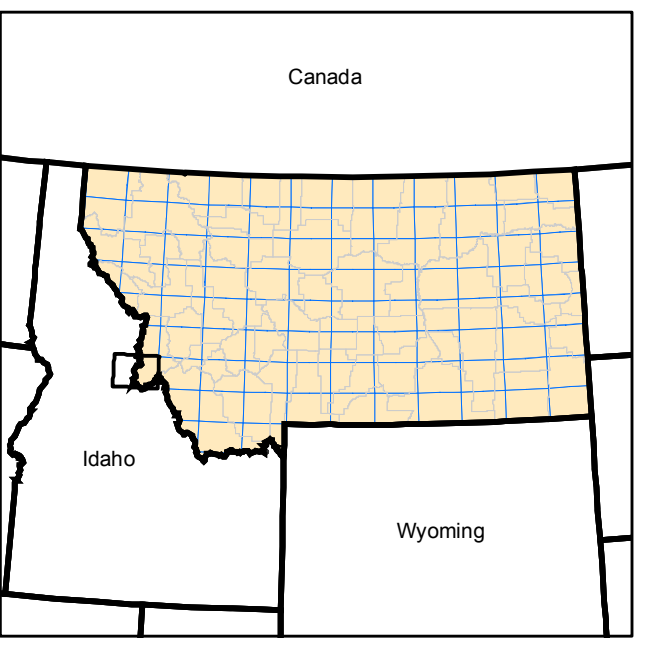


Ownership/Management		
Private	DNRC (State Trust Lands)	Township/Range
Bureau of Land Management	Montana Fish, Wildlife & Parks	Section
Bureau of Reclamation	University, Institutions, MDT	County
US Fish and Wildlife Service	DNRC (Water Project Lands)	Interstate
National Park Service	Local Government	US Route
US Forest Service	Bureau of Indian Affairs Trust	Secondary
Other USDA (Ag Research Stations)	Plum Creek	Montana Route
Army Corps of Engineers	Private Land Trusts	Local Road
Other Department of Defense	Conservation Easements	
Undifferentiated State Lands	Special Designations	



**Notes:**  
Not all legend items may appear on this map.  
Features shown on this map do not imply public access to any lands.  
The land status data displayed on this map may not be complete and may contain errors in boundary locations and/or coding. The Montana Natural Heritage Program makes no representations or warranties whatsoever with respect to the accuracy or completeness of the data contained in these maps and assumes no responsibility for the suitability of these data for a particular purpose. The Montana Natural Heritage Program will not be liable for any damages incurred as a result of errors displayed here.  
The ownership boundaries displayed on this map are not based on land survey data and are not a substitute for property surveys.  
For questions about the data displayed here or to report errors, please contact the Montana Natural Heritage Program at 406-444-5354 or mnhp@mt.gov.  
Visit the Natural Heritage Program web site at mnhp.org.

**Sources:**  
This map displays land status information contained in a statewide data layer that was developed from many sources and continues to be corrected and updated.  
Much of the public lands information was originally digitized by the Bureau of Land Management (BLM) from 1:100,000 scale BLM Surface Management Status maps. Additional information, corrections and updates (especially for tribal lands and private lands) were added by the University of Montana, Wildlife Spatial Analysis Unit, during 1996-1998.  
Since 1998, the Montana Natural Heritage Program has made numerous updates and corrections (especially for state trust lands, Montana Fish, Wildlife & Parks areas, US Fish & Wildlife Service areas, and conservation easements). These edits are based on data supplied by the various public agencies and land trusts, and have not been verified against county or Montana Department of Revenue records.  
The base scale for the data is 1:100,000, though many of the recent edits incorporate data digitized from 1:24,000 scale maps or survey data.



**MONTANA Natural Heritage Program**  
PO Box 201800  
1515 East 6th Avenue  
Helena, Montana 59620-1800  
406-444-5354  
http://mnhp.org  
mnhp@mt.gov

**Montana State Library Natural Resource Information System**  
Apr 23, 2007