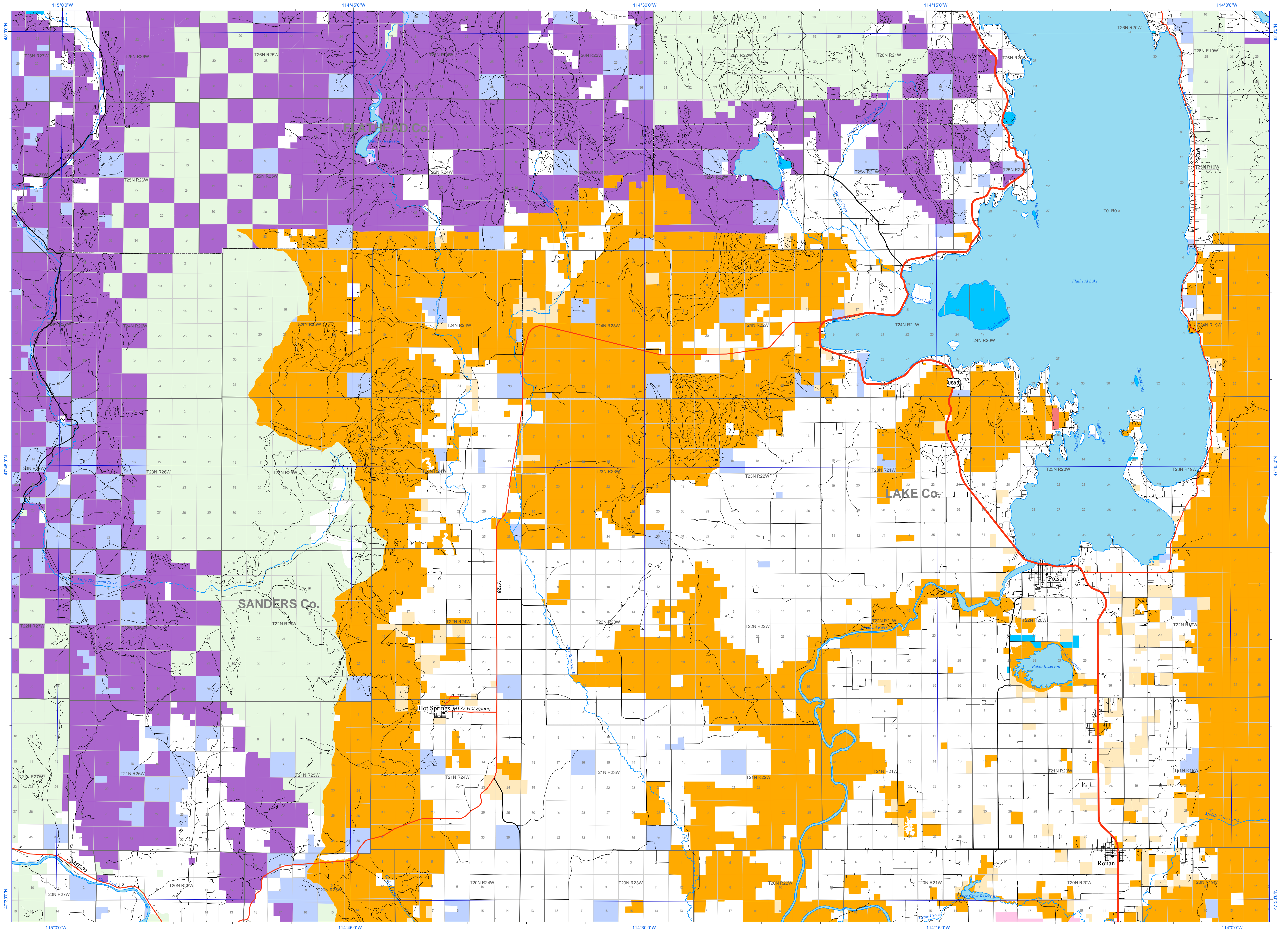


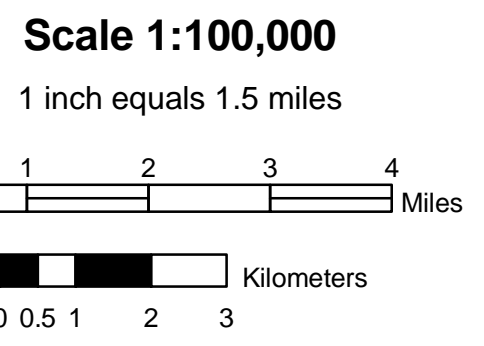
POLSON



PO Box 201800
1515 East 6th Avenue
Helena, Montana 59620-1800
406-444-3009
http://nhp.nhis.state.mt.us
mnhp@state.mt.us



Aug 18, 2004



Ownership/Management			
White	Private	White	Township/Range
Yellow	Bureau of Land Management	Blue	Section
Light Green	Bureau of Reclamation	Light Blue	County
Green	US Fish and Wildlife Service	Grey	Interstate
Light Green	National Park Service	Orange	US Route
Orange	US Forest Service	Light Orange	Secondary
Red	Other USDA (Ag Research Stations)	Dark Orange	Montana Route
Blue	Army Corps of Engineers	Light Purple	Local Road
Purple	Other Department of Defense	Dark Purple	
Light Blue	Undifferentiated State Lands	Light Blue	Montana Fish, Wildlife & Parks
Dark Blue	DNRC (State Trust Lands)	Dark Blue	University, Institutions, MDT
		Light Blue	DNRC (Water Project Lands)
		Light Blue	Local Government
		Light Blue	Bureau of Indian Affairs Trust
		Light Blue	Tribal Lands
		Light Blue	Undifferentiated Private
		Light Blue	Plum Creek
		Light Blue	Private Land Trusts
		Light Blue	Water

Notes:
Not all legend items may appear on this map.
Features shown on this map do not imply public access to any lands.
The land status data displayed on this map may not be complete and may contain errors in boundary locations and/or coding. The Montana Natural Heritage Program makes no representations or warranties whatsoever with respect to the accuracy or completeness of the data contained in these maps and assumes no responsibility for the suitability of these data for a particular purpose. The Montana Natural Heritage Program will not be liable for any damages incurred as a result of errors displayed here.
The ownership boundaries displayed on this map are not based on land survey data and are not a substitute for property surveys.
For questions about the data displayed here or to report errors, please contact the Montana Natural Heritage Program at 406-444-5354 or mnhp@state.mt.us.
Visit the Natural Heritage Program web site at mnhp.org.

Sources:
This map displays land status information contained in a statewide data layer that was developed from many sources and continues to be corrected and updated.
Much of the public lands information was originally digitized by the Bureau of Land Management (BLM) from 1:100,000 scale BLM Surface Management Status maps. Additional information, corrections and updates (especially for tribal lands and private lands) were added by the University of Montana, Wildlife Spatial Analysis Unit, during 1996-1998.
Since 1998, the Montana Natural Heritage Program has made numerous updates and corrections (especially for state trust lands, Montana Fish, Wildlife & Parks areas, US Fish & Wildlife Service areas, and conservation easements). These edits are based on data supplied by the various public agencies and land trusts, and have not been verified against county or Montana Department of Revenue records.
The base scale for the data is 1:100,000, though many of the recent edits incorporate data digitized from 1:24,000 scale maps or survey data.

