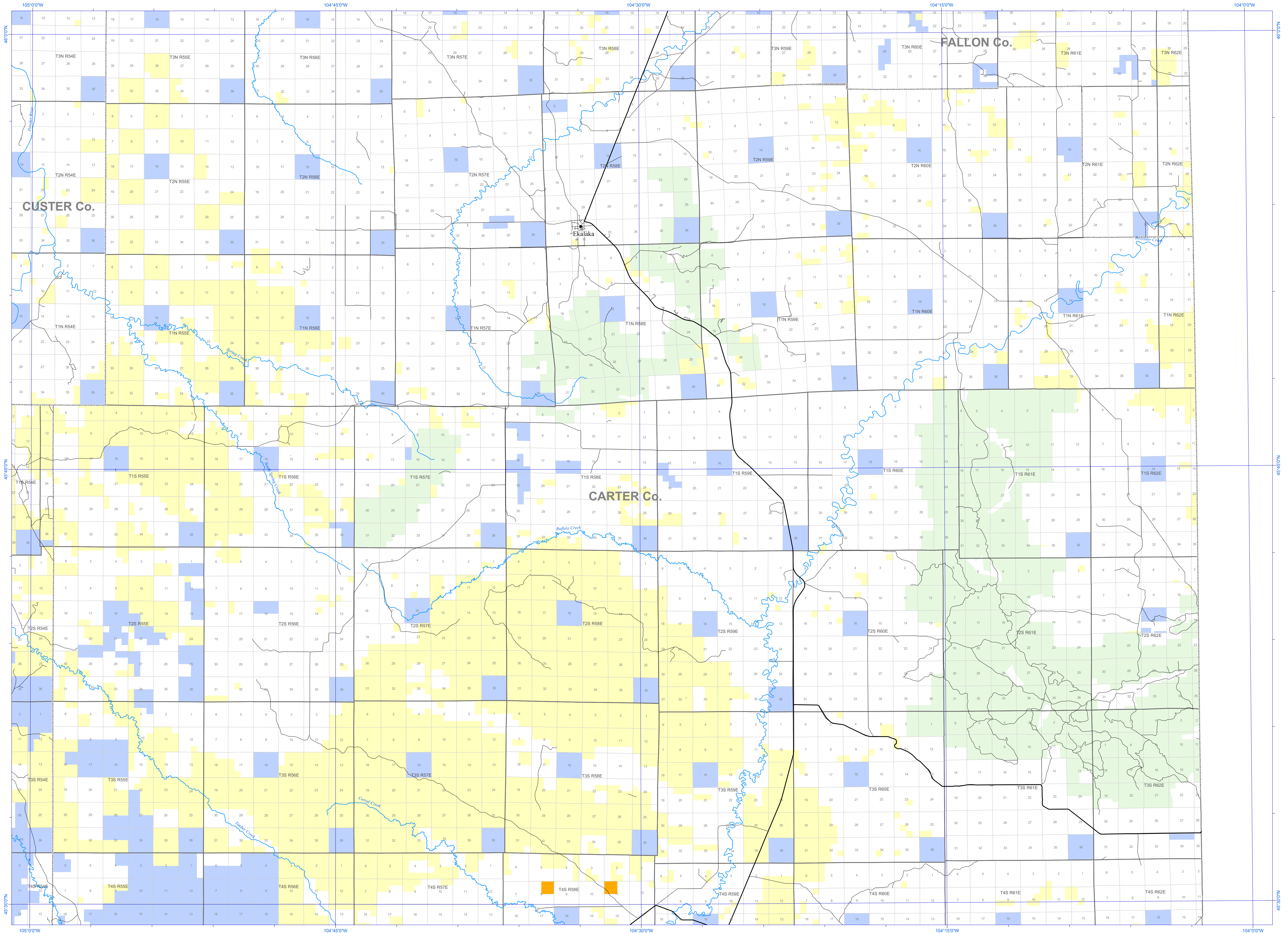


EKALAKA

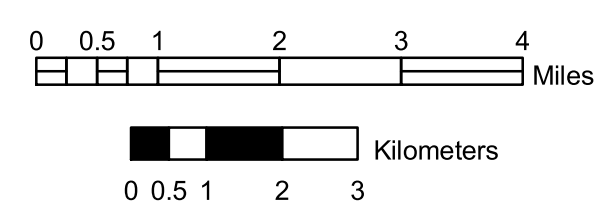


PO Box 201800
1515 East 6th Avenue
Helena, Montana 59620-1800
406-444-3009
<http://nhp.nris.state.mt.us>
mnhp@state.mt.us



Aug 19, 2004

Scale 1:100,000
1 inch equals 1.5 miles



Ownership/Management

Private	Montana Fish, Wildlife & Parks	Township/Range
Bureau of Land Management	University, Institutions, MDT	Section
Bureau of Reclamation	DNRC (Water Project Lands)	County
US Fish and Wildlife Service	Local Government	Interstate
National Park Service	Bureau of Indian Affairs Trust	US Route
US Forest Service	Tribal Lands	Secondary
Other USDA (Ag Research Stations)	Undifferentiated Private	Montana Route
Army Corps of Engineers	Plum Creek	Local Road
Other Department of Defense	Private Land Trusts	
Undifferentiated State Lands	Water	
DNRC (State Trust Lands)		

Notes:

Not all legend items may appear on this map.

Features shown on this map do not imply public access to any lands.

The land status data displayed on this map may not be complete and may contain errors in boundary locations and/or coding. The Montana Natural Heritage Program makes no representations or warranties whatsoever with respect to the accuracy or completeness of the data contained in these maps and assumes no responsibility for the suitability of these data for a particular purpose. The Montana Natural Heritage Program will not be liable for any damages incurred as a result of errors displayed here.

The ownership boundaries displayed on this map are not based on land survey data and are not a substitute for property surveys.

For questions about the data displayed here or to report errors, please contact the Montana Natural Heritage Program at 406-444-5354 or mnhp@state.mt.us.

Visit the Natural Heritage Program web site at mnhp.org.

Sources:

This map displays land status information contained in a statewide data layer that was developed from many sources and continues to be corrected and updated.

Much of the public lands information was originally digitized by the Bureau of Land Management (BLM) from 1:100,000 scale BLM Surface Management Status maps. Additional information, corrections and updates (especially for tribal lands and private lands) were added by the University of Montana, Wildlife Spatial Analysis Unit, during 1996-1998.

Since 1998, the Montana Natural Heritage Program has made numerous updates and corrections (especially for state trust lands, Montana Fish, Wildlife & Park areas, US Fish & Wildlife Service areas, and conservation easements). These edits are based on data supplied by the various public agencies and land trusts, and have not been verified against county or Montana Department of Revenue records.

The base scale for the data is 1:100,000, though many of the recent edits incorporate data digitized from 1:24,000 scale maps or survey data.

