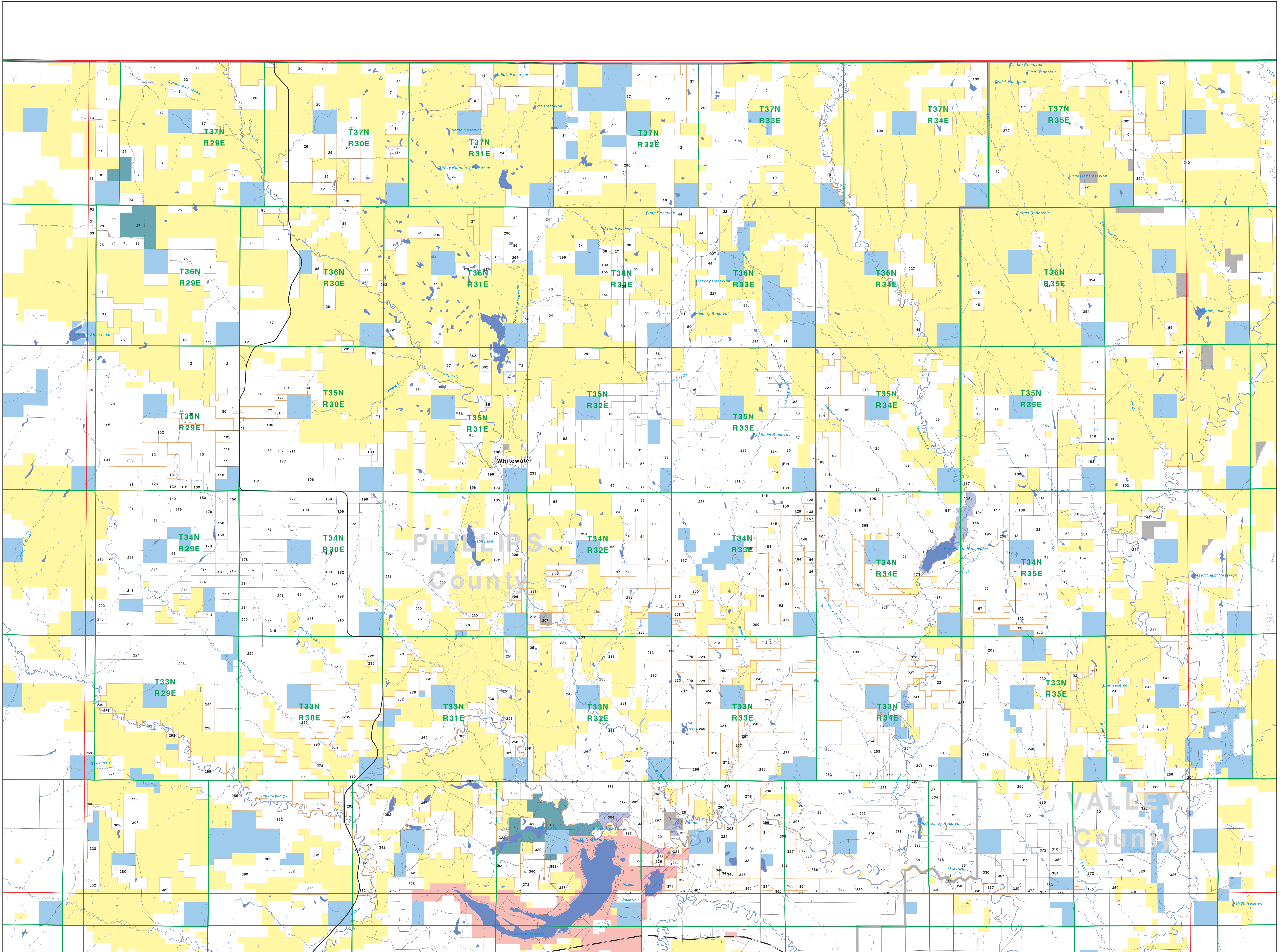


Private Land Ownership Identification

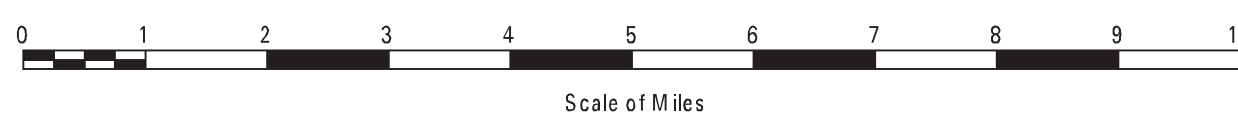
WHITE WATER - (48107b)



- Private
- Bureau of Land Management
- U.S. Forest Service
- National Park Service
- U.S. Fish and Wildlife Service
- Other Federal Land
- State Trust Lands
- Other State Lands
- Local Govt
- Indian Reservation Boundary
- MT Fish Wildlife & Parks Wildlife Management Area
- Lake/Reservoir

- Interstate
- Secondary Highway
- Highway
- Road
- Primitive Road
- River
- Stream/Creek
- Intermittent Creek
- Township
- County Border

NOTES:
Not all legend items may appear on this map.
Features shown on this map do not imply public access to any lands.
The land status data displayed on this map may not be complete and may contain errors in boundary locations and/or coding.
DISCLAIMERS:
The MT Natural Heritage Program, MT State Library, MT Dept of Administration and MT Dept of Revenue make no representation or warranty whatsoever with respect to the accuracy or completeness of the data contained in these maps and assumes no responsibility for the suitability of these data for a particular purpose. These agencies will not be liable for any damages incurred as a result of errors displayed here. The ownership boundaries displayed on this map are not based on land survey data and are not a substitute for property surveys. This map displays public and private land ownership information derived from several sources and continues to be corrected and updated.



SOURCES / ACKNOWLEDGEMENTS

This map was produced as a joint effort between the MT Dept. of Fish, Wildlife, and Parks (FWP) and the Montana Natural Resource Information System (NRIS) of the MT State Library, in response to Montana Code Annotated 87-3-308, which directs the FWP to "...work cooperatively with all state and federal land management agencies...to develop accurate land ownership maps...in the State".
The public land data is from the MT Natural Heritage Program land ownership data collection. Much of this data was originally digitized by the Bureau of Land Management (BLM) from 1:100,000 scale BLM Surface Management Status maps. Additional information, corrections and updates (especially for small lands and private lands) were added by the University of Montana, Wildlife Spatial Analysis Unit, during 1996-1998. Since 1998, the Montana Natural Heritage Program has made numerous updates and corrections (especially for state trust lands, Montana Fish, Wildlife & Parks areas, US Fish & Wildlife Service areas, and conservation easements). These edits are based on data supplied by the various public agencies and land trusts, and have not been verified against county or Montana Department of Revenue records.

The private land data were developed for the Montana Cadastral Database Project. These data are provided through a cooperative effort between the Montana Department of Administration (DOA), the Montana Department of Revenue (DOR), other state agencies, local governments, USDOI BLM and private enterprise. Lands depicted on this map represent single ownership of contiguous parcels that are at least 40 acres in size. The DOA maintains the GIS cadastral layer and the DOR maintains the private ownership information.
The base scale for the public ownership data is 1:100,000, though many of the recent edits incorporate data digitized from 1:24,000 scale maps or survey data. Private ownership data is accurate to scales of 1:24,000 or smaller.

Map produced August 2012 with ownership data current as of July, 2012.

USGS 100,000 Scale Quadrangle Index																			
1160	481150	481140	481130	481120	481110	481100	481090	481080	481070	481060	481050	481040	481030	481020	481010	481000	480990	480980	480970
1164	481154	481144	481134	481124	481114	481104	481094	481084	481074	481064	481054	481044	481034	481024	481014	481004	480994	480984	480974
1168	481158	481148	481138	481128	481118	481108	481098	481088	481078	481068	481058	481048	481038	481028	481018	481008	480998	480988	480978
1172	481162	481152	481142	481132	481122	481112	481102	481092	481082	481072	481062	481052	481042	481032	481022	481012	481002	480992	480982
1176	481166	481156	481146	481136	481126	481116	481106	481096	481086	481076	481066	481056	481046	481036	481026	481016	481006	480996	480986
1180	481170	481160	481150	481140	481130	481120	481110	481100	481090	481080	481070	481060	481050	481040	481030	481020	481010	481000	480990
1184	481174	481164	481154	481144	481134	481124	481114	481104	481094	481084	481074	481064	481054	481044	481034	481024	481014	481004	480994
1188	481178	481168	481158	481148	481138	481128	481118	481108	481098	481088	481078	481068	481058	481048	481038	481028	481018	481008	480998
1192	481182	481172	481162	481152	481142	481132	481122	481112	481102	481092	481082	481072	481062	481052	481042	481032	481022	481012	481002
1196	481186	481176	481166	481156	481146	481136	481126	481116	481106	481096	481086	481076	481066	481056	481046	481036	481026	481016	481006
1200	481190	481180	481170	481160	481150	481140	481130	481120	481110	481100	481090	481080	481070	481060	481050	481040	481030	481020	481010
1204	481194	481184	481174	481164	481154	481144	481134	481124	481114	481104	481094	481084	481074	481064	481054	481044	481034	481024	481014
1208	481198	481188	481178	481168	481158	481148	481138	481128	481118	481108	481098	481088	481078	481068	481058	481048	481038	481028	481018
1212	481202	481192	481182	481172	481162	481152	481142	481132	481122	481112	481102	481092	481082	481072	481062	481052	481042	481032	481022
1216	481206	481196	481186	481176	481166	481156	481146	481136	481126	481116	481106	481096	481086	481076	481066	481056	481046	481036	481026
1220	481210	481200	481190	481180	481170	481160	481150	481140	481130	481120	481110	481100	481090	481080	481070	481060	481050	481040	481030
1224	481214	481204	481194	481184	481174	481164	481154	481144	481134	481124	481114	481104	481094	481084	481074	481064	481054	481044	481034
1228	481218	481208	481198	481188	481178	481168	481158	481148	481138	481128	481118	481108	481098	481088	481078	481068	481058	481048	481038
1232	481222	481212	481202	481192	481182	481172	481162	481152	481142	481132	481122	481112	481102	481092	481082	481072	481062	481052	481042
1236	481226	481216	481206	481196	481186	481176	481166	481156	481146	481136	481126	481116	481106	481096	481086	481076	481066	481056	481046
1240	481230	481220	481210	481200	481190	481180	481170	481160	481150	481140	481130	481120	481110	481100	481090	481080	481070	481060	481050
1244	481234	481224	481214	481204	481194	481184	481174	481164	481154	481144	481134	481124	481114	481104	481094	481084	481074	481064	481054
1248	481238	481228	481218	481208	481198	481188	481178	481168	481158	481148	481138	481128	481118	481108	481098	481088	481078	481068	481058
1252	481242	481232	481222	481212	481202	481192	481182	481172	481162	481152	481142	481132	481122	481112	481102	481092	481082	481072	481062
1256	481246	481236	481226	481216	481206	481196	481186	481176	481166	481156	481146	481136	481126	481116	481106	481096	481086	481076	481066
1260	481250	481240	481230	481220	481210	481200	481190	481180	481170	481160	481150	481140	481130	481120	481110	481100	481090	481080	481070
1264	481254	481244	481234	481224	481214	481204	481194	481184	481174	481164	481154	481144	481134	481124	481114	481104	481094	481084	481074
1268	481258	481248	481238	481228	481218	481208	481198	481188	481178	481168	481158	481148	481138	481128	481118	481108	481098	481088	481078
1272	481262	481252	481242	481232	481222	481212	481202	481192	481182	481172	481162	481152	481142	481132	481122	481112	481102	481092	481082
1276	481266	481256	481246	481236	481226	481216	481206	481196	481186	481176	481166	481156	481146	481136	481126	481116	481106	481096	481086
1280	481270	481260	481250	481240	481230	481220	481210	481200	481190	481180	481170	481160	481150	481140	481130	481120	481110	481100	481090
1284	481274	481264	481254	481244	481234	481224	481214	481204	481194	481184	481174	481164	481154	481144	481134	481124	481114	481104	481094
1288	481278	481268	481258	481248	481238	481228	481218	481208	481198	481188	481178	481168	481158	481148	481138	481128	481118	481108	481098
1292	481282	481272	481262	481252	481242	481232	481222	481212	481202	481192	481182	481172	481162	481152	481142	481132	481122	481112	481102
1296	481286	481276	481266	481256	481246	481236	481226	481216	481206	481196	481186	481176	481166	481156	481146	481136	481126	481116	481106
1300	481290	481280	481270	481260	481250	481240	481230	481220	481210	481200	481190	481180	481170	481160	481150	481140	481130	481120	481110
1304	481294	481284	481274	481264	481254	481244	481234	481224	481214	481204	481194	481184	481174	481164	481154	481144	481134	481124	481114
1308	481298	481288	481278	481268	481258	481248	481238	481228	481218	481208	481198	481188	481178	481168	481158	481148	481138	481128	481118
1312	481302	481292	481282	481272	481262	481252	481242	481232	481222	481212	481202	481192	481182	481172	481162	481152	481142	481132	481122
1316	481306	481296	481286	481276	481266	481256	481246	481236	481226	481216	481206	481196	481186	481176	481166	481156	481146	481136	481126
1320	481310	481300	481290	481280	481270	481260	481250	481240	481230	481220	481210	481200	481190	481180	481170	481160	481150	481140	481130
1324	481314	481304	481294	481284	481274	481264	481254	481244	481234	481224	481214	481204	481194	481184	481174	481164	481154	481144	481134
1328	481318	481308	481298	481288	481278	481268	481258	481248	481238	481228	481218	481208	481198	481188	481178	481168	481158	481148	481138
1332	481322	481312	481302	481292	481282	481272	481262	481252	481242	481232	481222	481212	481202	481192	481182	481172	481162	481152	481142
1336	481326	481316	481306	481296	481286	481276	481266	481256	481246	481236	481226	481216	481206	481196	481186	481176	481166	481156	481146
1340	481330	481320	481310	481300	481290	481280	481270	481260	481250	481240	481230	481220	481210	481200	481190	481180	481170	481160	481150
1344	481334	481324	481314	481304	481294	481284	481274	481264	481254	481244	481234	481224	481214	481204	481194	481184	481174	481164	481154
1348	481338	481328	481318	481308	481298	481288	481278	481268	481258	481248	481238	481228	481218	481208	481198	481188	481178	481168	481158
1352	481342	481332	481322	481312	481302	481292	481282	481272	481262	481252	481242	481232	481222	481212	481202	481192	481182	481172	481162
1356	481346	481336	481326	481316	481306	481296	481286	481276	481266	481256	481246	481236	481226	481216	481206	481196	481186	481176	481166
1360	481350	481340	481330	481320	481310	481300	481290	481280	481270	481260	481250	481240	481230	481220	481210	481200	481190	481180	481170
1364	481354	481344	481334	481324	481314	481304	481294	481284	481274	481264	481254	481244	481234	481224	481214	481204	481194	481184	481174
1368	481358	481348	481338	481328	481318	481308	481298	481288	481278	481268	481258	481248	481238	481228	481218	481208	481198	481188	481178
1372	481362	481352	481342	481332	481322	481312	481302	481292	481282	481272	481262	481252	481242	481232	481222	481212	481202	481192	481182
1376	481366	481356	481346	481336	481326	481316	481306	481296	481286	481276	481266	481256	481246	481236	481226	481216	481206	481196	481186
1380	481370	481360	481350	481340	481330	481320	481310	481300	481290	481280	481270	481260							