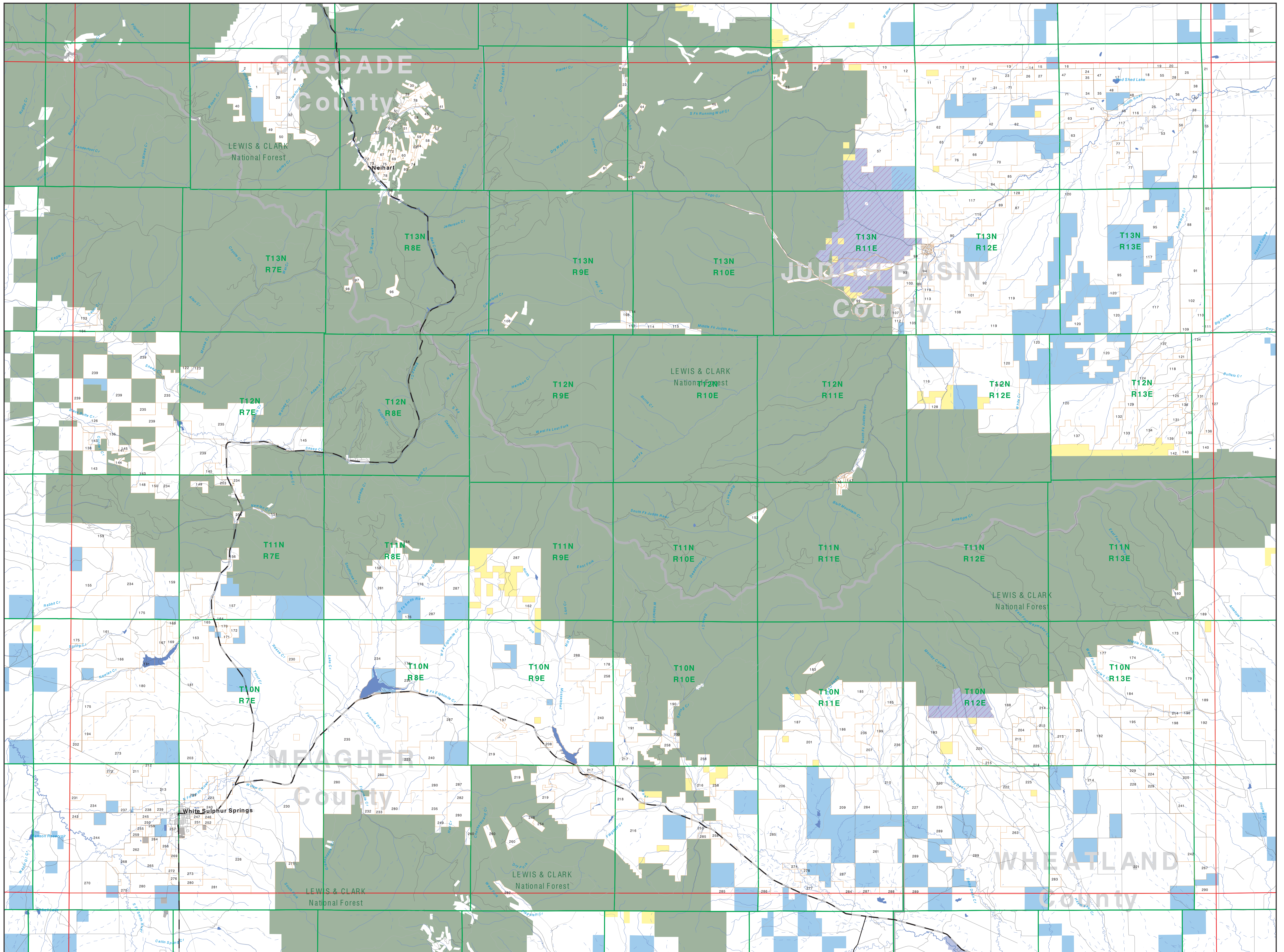
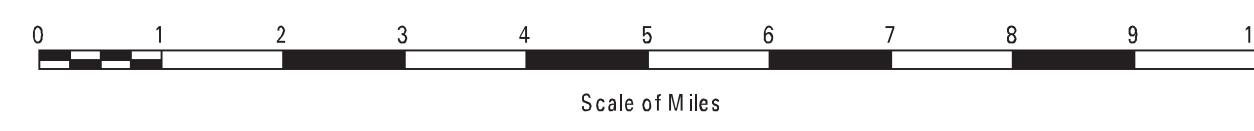


Private Land Ownership Identification

WHITE SULPHUR SPRINGS - (46110b)



- Private
- Bureau of Land Management
- U.S. Forest Service
- National Park Service
- U.S. Fish and Wildlife Service
- Other Federal Land
- State Trust Lands
- Other State Lands
- Local Govt
- Indian Reservation Boundary
- MT Fish Wildlife & Parks Wildlife Management Area
- Lake/Reservoir
- Interstate
- Secondary Highway
- Highway
- Road
- Primitive Road
- River
- Stream/Creek
- Intermittent Creek
- Township
- County Border



SOURCES / ACKNOWLEDGEMENTS

This map was produced as a joint effort between the MT Dept. of Fish, Wildlife, and Parks (FWP) and the Montana Natural Resource Information System (NRIS) of the MT State Library, in response to Montana Code Annotated 87-3-306, which directs the FWP to "work cooperatively with all state and federal land management agencies... to develop accurate land ownership maps... in the State".

The public land data is from the MT Natural Heritage Program land ownership data collection. Much of this data was originally digitized by the Bureau of Land Management (BLM) from 1:100,000 scale BLM Surface Management Status maps. Additional information, corrections and updates (especially for small lands and private lands) were added by the University of Montana, while Spatial Analysis Unit, during 1990-1998. Since 1998, the Montana Natural Heritage Program has made numerous updates and corrections (especially for state trust lands, Montana Fish, Wildlife & Parks areas, US Fish & Wildlife Service areas, and conservation easements). These edits are based on data supplied by the various public agencies and land trusts, and have not been verified against county or Montana Department of Revenue records.

The private land data was developed for the Montana Cadastral Database Project. These data are provided through a cooperative effort between the Montana Department of Administration (DOA), the Montana Department of Revenue (DOR), other state agencies, local governments, USDI BLM and private enterprise. Lands depicted on this map represent single ownership of contiguous parcels that are at least 40 acres in size. The DOA maintains the GIS cadastral layer and the DOR maintains the private ownership information.

The base scale for the public ownership data is 1:100,000, though many of the recent edits incorporate data digitized from 1:24,000 scale maps or survey data. Private ownership data is accurate to scales of 1:24,000 or smaller.

Map produced August 2012 with ownership data current as of July, 2012.

NOTES:
 Not all land items may appear on this map.
 Features shown on this map do not imply public access to any lands.
 The land status data displayed on this map may not be complete and may contain errors in boundary locations and/or coding.
 DISCLAIMER:
 The MT Natural Heritage Program, MT State Library, MT Dept. of Administration and MT Dept. of Revenue make no representations or warranties whatsoever with respect to the accuracy or completeness of the data contained in these maps and assume no responsibility for the suitability of these data for a particular purpose. These agencies will not be liable for any damages incurred as a result of errors displayed here. The ownership boundaries displayed on this map are not based on land survey data and are not a substitute for property surveys. This map displays public and private land ownership information derived from several sources and continues to be corrected and updated.

USGS 100,000 Scale Quadrangle Index

1160	481130	481140	481150	481160	481170	481180	481190	481200	481210	481220	481230	481240
1161	481150	481160	481170	481180	481190	481200	481210	481220	481230	481240	481250	481260
1162	481140	481150	481160	481170	481180	481190	481200	481210	481220	481230	481240	481250
1163	481130	481140	481150	481160	481170	481180	481190	481200	481210	481220	481230	481240
1164	481120	481130	481140	481150	481160	481170	481180	481190	481200	481210	481220	481230
1165	481110	481120	481130	481140	481150	481160	481170	481180	481190	481200	481210	481220
1166	481100	481110	481120	481130	481140	481150	481160	481170	481180	481190	481200	481210
1167	481090	481100	481110	481120	481130	481140	481150	481160	481170	481180	481190	481200
1168	481080	481090	481100	481110	481120	481130	481140	481150	481160	481170	481180	481190
1169	481070	481080	481090	481100	481110	481120	481130	481140	481150	481160	481170	481180
1170	481060	481070	481080	481090	481100	481110	481120	481130	481140	481150	481160	481170
1171	481050	481060	481070	481080	481090	481100	481110	481120	481130	481140	481150	481160
1172	481040	481050	481060	481070	481080	481090	481100	481110	481120	481130	481140	481150
1173	481030	481040	481050	481060	481070	481080	481090	481100	481110	481120	481130	481140
1174	481020	481030	481040	481050	481060	481070	481080	481090	481100	481110	481120	481130
1175	481010	481020	481030	481040	481050	481060	481070	481080	481090	481100	481110	481120
1176	481000	481010	481020	481030	481040	481050	481060	481070	481080	481090	481100	481110
1177	480990	481000	481010	481020	481030	481040	481050	481060	481070	481080	481090	481100
1178	480980	480990	481000	481010	481020	481030	481040	481050	481060	481070	481080	481090
1179	480970	480980	480990	481000	481010	481020	481030	481040	481050	481060	481070	481080
1180	480960	480970	480980	480990	481000	481010	481020	481030	481040	481050	481060	481070
1181	480950	480960	480970	480980	480990	481000	481010	481020	481030	481040	481050	481060
1182	480940	480950	480960	480970	480980	480990	481000	481010	481020	481030	481040	481050
1183	480930	480940	480950	480960	480970	480980	480990	481000	481010	481020	481030	481040
1184	480920	480930	480940	480950	480960	480970	480980	480990	481000	481010	481020	481030
1185	480910	480920	480930	480940	480950	480960	480970	480980	480990	481000	481010	481020
1186	480900	480910	480920	480930	480940	480950	480960	480970	480980	480990	481000	481010
1187	480890	480900	480910	480920	480930	480940	480950	480960	480970	480980	480990	481000
1188	480880	480890	480900	480910	480920	480930	480940	480950	480960	480970	480980	480990
1189	480870	480880	480890	480900	480910	480920	480930	480940	480950	480960	480970	480980
1190	480860	480870	480880	480890	480900	480910	480920	480930	480940	480950	480960	480970
1191	480850	480860	480870	480880	480890	480900	480910	480920	480930	480940	480950	480960
1192	480840	480850	480860	480870	480880	480890	480900	480910	480920	480930	480940	480950
1193	480830	480840	480850	480860	480870	480880	480890	480900	480910	480920	480930	480940
1194	480820	480830	480840	480850	480860	480870	480880	480890	480900	480910	480920	480930
1195	480810	480820	480830	480840	480850	480860	480870	480880	480890	480900	480910	480920
1196	480800	480810	480820	480830	480840	480850	480860	480870	480880	480890	480900	480910
1197	480790	480800	480810	480820	480830	480840	480850	480860	480870	480880	480890	480900
1198	480780	480790	480800	480810	480820	480830	480840	480850	480860	480870	480880	480890
1199	480770	480780	480790	480800	480810	480820	480830	480840	480850	480860	480870	480880
1200	480760	480770	480780	480790	480800	480810	480820	480830	480840	480850	480860	480870
1201	480750	480760	480770	480780	480790	480800	480810	480820	480830	480840	480850	480860
1202	480740	480750	480760	480770	480780	480790	480800	480810	480820	480830	480840	480850
1203	480730	480740	480750	480760	480770	480780	480790	480800	480810	480820	480830	480840
1204	480720	480730	480740	480750	480760	480770	480780	480790	480800	480810	480820	480830
1205	480710	480720	480730	480740	480750	480760	480770	480780	480790	480800	480810	480820
1206	480700	480710	480720	480730	480740	480750	480760	480770	480780	480790	480800	480810
1207	480690	480700	480710	480720	480730	480740	480750	480760	480770	480780	480790	480800
1208	480680	480690	480700	480710	480720	480730	480740	480750	480760	480770	480780	480790
1209	480670	480680	480690	480700	480710	480720	480730	480740	480750	480760	480770	480780
1210	480660	480670	480680	480690	480700	480710	480720	480730	480740	480750	480760	480770
1211	480650	480660	480670	480680	480690	480700	480710	480720	480730	480740	480750	480760
1212	480640	480650	480660	480670	480680	480690	480700	480710	480720	480730	480740	480750
1213	480630	480640	480650	480660	480670	480680	480690	480700	480710	480720	480730	480740
1214	480620	480630	480640	480650	480660	480670	480680	480690	480700	480710	480720	480730
1215	480610	480620	480630	480640	480650	480660	480670	480680	480690	480700	480710	480720
1216	480600	480610	480620	480630	480640	480650	480660	480670	480680	480690	480700	480710
1217	480590	480600	480610	480620	480630	480640	480650	480660	480670	480680	480690	480700
1218	480580	480590	480600	480610	480620	480630	480640	480650	480660	480670	480680	480690
1219	480570	480580	480590	480600	480610	480620	480630	480640	480650	480660	480670	480680
1220	480560	480570	480580	480590	480600	480610	480620	480630	480640	480650	480660	480670
1221	480550	480560	480570	480580	480590	480600	480610	480620	480630	480640	480650	480660
1222	480540	480550	480560	480570	480580	480590	480600	480610	480620	480630	480640	480650
1223	480530	480540	480550	480560	480570	480580	480590	480600	480610	480620	480630	480640
1224	480520	480530	480540	480550	480560	480570	480580	480590	480600	480610	480620	480630
1225	480510	480520	480530	480540	480550	480560	480570	480580	480590	480600	480610	480620
1226	480500	480510	480520	480530	480540	480550	480560	480570	480580	480590	480600	480610
1227	480490	480500	480510	480520	480530	480540	480550	480560	480570	480580	480590	480600
1228	480480	480490	480500	480510	480520	480530	480540	480550	480560	480570	480580	480590
1229	480470	480480	480490	480500	480510	480520	48					