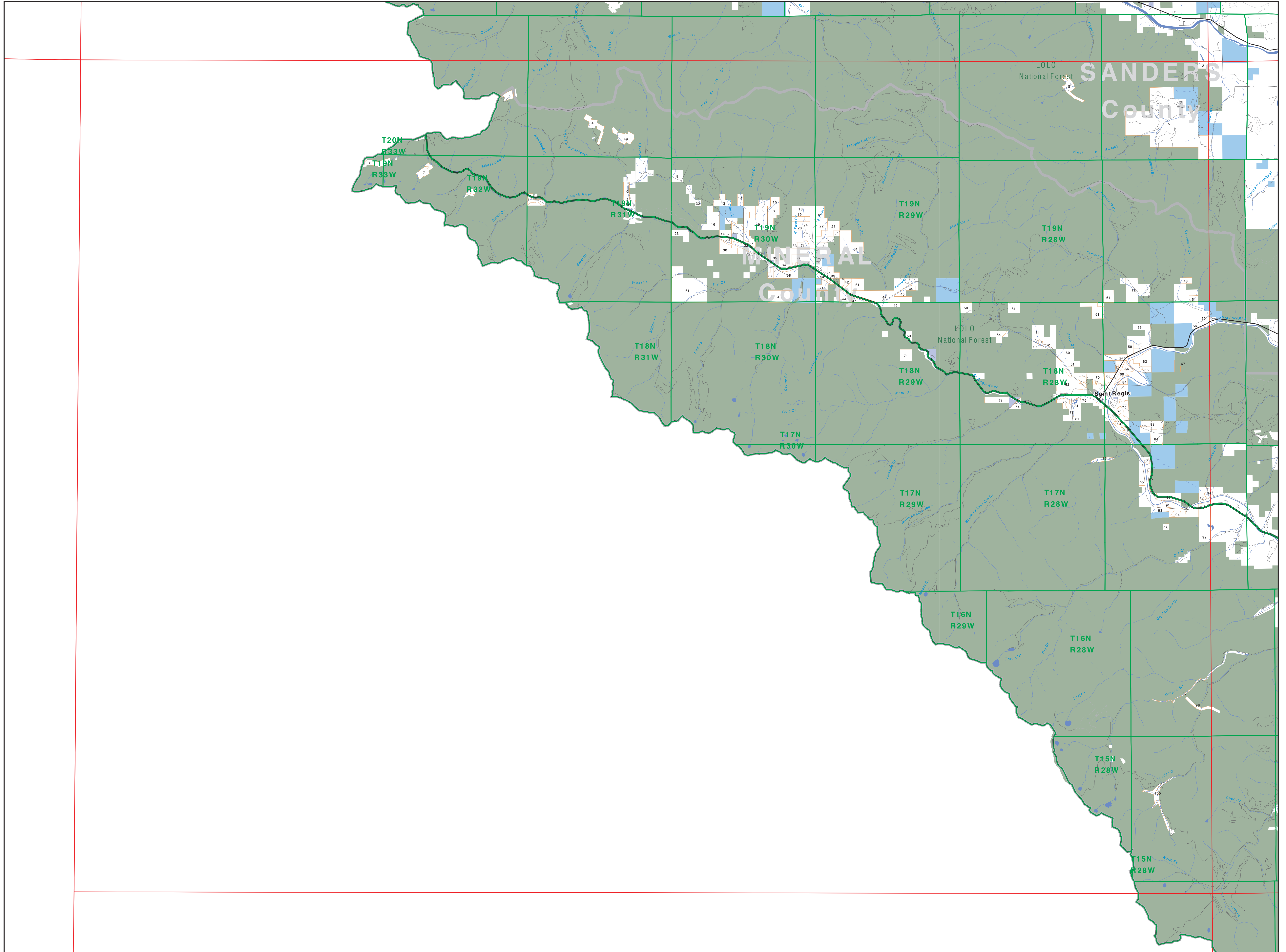


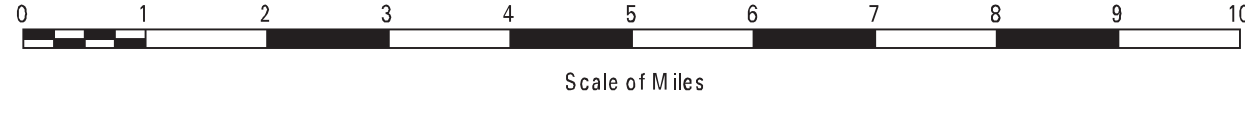
# Private Land Ownership Identification

## WALLACE - (47115a)



- Private
- Bureau of Land Management
- U.S. Forest Service
- National Park Service
- U.S. Fish and Wildlife Service
- Other Federal Land
- State Trust Lands
- Other State Lands
- Local Govt
- Indian Reservation Boundary
- MT Fish Wildlife & Parks Wildlife Management Area
- Lake/Reservoir
- Interstate
- Secondary Highway
- Highway
- Road
- Primitive Road
- River
- Stream/Creek
- Intermittent Creek
- Township
- County Border

**NOTES:**  
 Not all legend items may appear on this map.  
 Features shown on this map do not imply public access to any lands.  
 The land status data displayed on this map may not be complete and may contain errors in boundary locations and/or coding.  
**DISCLAIMERS:**  
 The MT Natural Heritage Program, MT State Library, MT Dept. of Administration and MT Dept. of Revenue make no representations or warranties whatsoever with respect to the accuracy or completeness of the data contained in these maps and assume no responsibility for the suitability of these data for a particular purpose. These agencies will not be liable for any damages incurred as a result of errors displayed here. The ownership boundaries displayed on this map are not based on land survey data and are not a substitute for property surveys. This map displays public and private land ownership information derived from several sources and continues to be corrected and updated.



**SOURCES / ACKNOWLEDGEMENTS**  
 This map was produced as a joint effort between the MT Dept. of Fish, Wildlife, and Parks (FWP) and the Montana Natural Resource Information System (NRIS) of the MT State Library, in response to Montana Code Annotated 87-3-306, which directs the FWP to "work cooperatively with all state and federal land management agencies... to develop accurate land ownership maps... in the State".  
 The public land data is from the MT Natural Heritage Program land ownership data collection. Much of this data was originally digitized by the Bureau of Land Management (BLM) from 1:100,000 scale BLM Surface Management Status maps. Additional information, corrections and updates (especially for small lands and private lands) were added by the University of Montana, while Spatial Analysis Unit, during 1996-1998. Since 1998, the Montana Natural Heritage Program has made numerous updates and corrections (especially for state trust lands, Montana Fish, Wildlife & Parks areas, US Fish & Wildlife Service areas, and conservation easements). These edits are based on data supplied by the various public agencies and land trusts, and have not been verified against county or Montana Department of Revenue records.

The private land data were developed for the Montana Cadastral Database Project. These data are provided through a cooperative effort between the Montana Department of Administration (DOA), the Montana Department of Revenue (DOR), other state agencies, local governments, USDI BLM and private enterprise. Lands depicted on this map represent single ownership of contiguous parcels that are at least 40 acres in size. The DOA maintains the GIS cadastral layer and the DOR maintains the private ownership information.  
 The base scale for the public ownership data is 1:100,000, though many of the recent edits incorporate data digitized from 1:24,000 scale maps or survey data. Private ownership data is accurate to scales of 1:24,000 or smaller.  
 Map produced August 2012 with ownership data current as of July, 2012.

**USGS 100,000 Scale Quadrangle Index**

1100	481100	481140	481180	481220	481260	481300	481340	481380	481420	481460	481500	481540	481580	481620
1101	481150	481190	481230	481270	481310	481350	481390	481430	481470	481510	481550	481590	481630	481670
1102	481200	481240	481280	481320	481360	481400	481440	481480	481520	481560	481600	481640	481680	481720
1103	481250	481290	481330	481370	481410	481450	481490	481530	481570	481610	481650	481690	481730	481770
1104	481300	481340	481380	481420	481460	481500	481540	481580	481620	481660	481700	481740	481780	481820
1105	481350	481390	481430	481470	481510	481550	481590	481630	481670	481710	481750	481790	481830	481870
1106	481400	481440	481480	481520	481560	481600	481640	481680	481720	481760	481800	481840	481880	481920
1107	481450	481490	481530	481570	481610	481650	481690	481730	481770	481810	481850	481890	481930	481970
1108	481500	481540	481580	481620	481660	481700	481740	481780	481820	481860	481900	481940	481980	482020
1109	481550	481590	481630	481670	481710	481750	481790	481830	481870	481910	481950	481990	482030	482070
1110	481600	481640	481680	481720	481760	481800	481840	481880	481920	481960	482000	482040	482080	482120
1111	481650	481690	481730	481770	481810	481850	481890	481930	481970	482010	482050	482090	482130	482170
1112	481700	481740	481780	481820	481860	481900	481940	481980	482020	482060	482100	482140	482180	482220
1113	481750	481790	481830	481870	481910	481950	481990	482030	482070	482110	482150	482190	482230	482270
1114	481800	481840	481880	481920	481960	482000	482040	482080	482120	482160	482200	482240	482280	482320
1115	481850	481890	481930	481970	482010	482050	482090	482130	482170	482210	482250	482290	482330	482370
1116	481900	481940	481980	482020	482060	482100	482140	482180	482220	482260	482300	482340	482380	482420
1117	481950	481990	482030	482070	482110	482150	482190	482230	482270	482310	482350	482390	482430	482470
1118	482000	482040	482080	482120	482160	482200	482240	482280	482320	482360	482400	482440	482480	482520
1119	482050	482090	482130	482170	482210	482250	482290	482330	482370	482410	482450	482490	482530	482570
1120	482100	482140	482180	482220	482260	482300	482340	482380	482420	482460	482500	482540	482580	482620