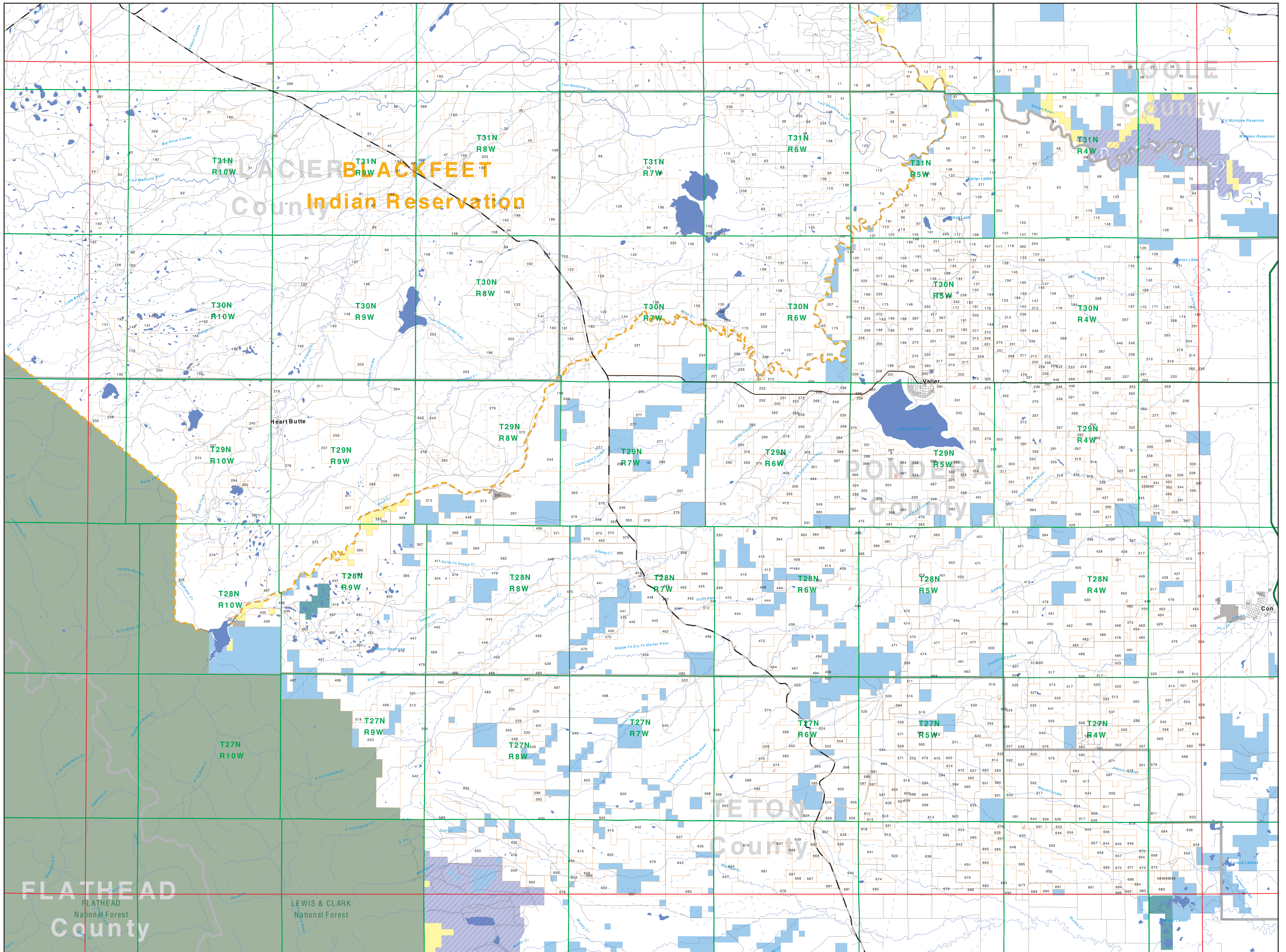


Private Land Ownership Identification

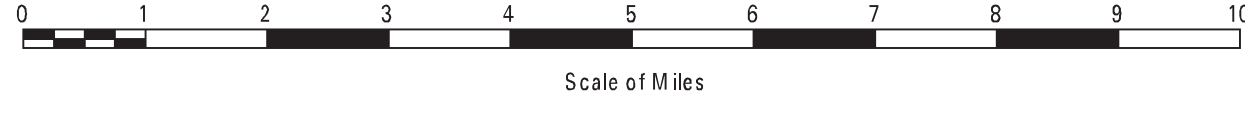
VALIER - (48112a)



- Private
- Bureau of Land Management
- U.S. Forest Service
- National Park Service
- U.S. Fish and Wildlife Service
- Other Federal Land
- State Trust Lands
- Other State Lands
- Local Govt
- Indian Reservation Boundary
- MT Fish Wildlife & Parks Wildlife Management Area
- Lake/Reservoir

- Interstate
- Secondary Highway
- Highway
- Road
- Primitive Road
- River
- Stream/Creek
- Intermittent Creek
- Township
- County Border

NOTES:
 Not all land items may appear on this map.
 Features shown on this map do not imply public access to any lands.
 The land status data displayed on this map may not be complete and may contain errors in boundary locations and/or coding.
DISCLAIMERS:
 The MT Natural Heritage Program, MT State Library, MT Dept. of Administration and MT Dept. of Revenue make no representations or warranties whatsoever with respect to the accuracy or completeness of the data contained in these maps and assume no responsibility for the suitability of these data for a particular purpose. These agencies will not be liable for any damages incurred as a result of errors displayed here. The ownership boundaries displayed on this map are not based on land survey data and are not a substitute for property surveys. This map displays public and private land ownership information derived from several sources and continues to be corrected and updated.



SOURCES/ACKNOWLEDGEMENTS
 This map was produced as a joint effort between the MT Dept. of Fish, Wildlife, and Parks (FWP) and the Montana Natural Resource Information System (NRIS) of the MT State Library, in response to Montana Code Annotated 87-3-206, which directs the FWP to "...work cooperatively with all state and federal land management agencies...to develop accurate land ownership maps...in the State".
 The public land data is from the MT Natural Heritage Program land ownership data collection. Much of this data was originally digitized by the Bureau of Land Management (BLM) from 1:100,000 scale BLM Surface Management Status maps. Additional information, corrections and updates (especially for small lands and private lands) were added by the University of Montana, while Spatial Analysis Unit, during 1996-1998. Since 1998, the Montana Natural Heritage Program has made numerous updates and corrections (especially for state trust lands, Montana Fish, Wildlife & Parks areas, US Fish & Wildlife Service areas, and conservation easements). These edits are based on data supplied by the various public agencies and land trusts, and have not been verified against county or Montana Department of Revenue records.

The private land data were developed for the Montana Cadastral Database Project. These data are provided through a cooperative effort between the Montana Department of Administration (DOA), the Montana Department of Revenue (DOR), other state agencies, local governments, USDOI BLM and private enterprise. Lands depicted on this map represent single ownership of contiguous parcels that are at least 40 acres in size. The DOA maintains the GIS cadastral layer and the DOR maintains the private ownership information.
 The base scale for the public ownership data is 1:100,000, though many of the recent edits incorporate data digitized from 1:24,000 scale maps or survey data. Private ownership data is accurate to scales of 1:24,000 or smaller.
 Map produced August 2012 with ownership data current as of July, 2012.

USGS 100,000 Scale Quadrangle Index

1100	481130	481140	481150	481160	481170	481180	481190	481200	481210	481220	481230	481240
1184	481154	481164	481174	481184	481194	481204	481214	481224	481234	481244	481254	481264
180	471110	471120	471130	471140	471150	471160	471170	471180	471190	471200	471210	471220
471158	471168	471178	471188	471198	471208	471218	471228	471238	471248	471258	471268	471278
481150	481160	481170	481180	481190	481200	481210	481220	481230	481240	481250	481260	481270
481174	481184	481194	481204	481214	481224	481234	481244	481254	481264	481274	481284	481294
481180	481190	481200	481210	481220	481230	481240	481250	481260	481270	481280	481290	481300
481184	481194	481204	481214	481224	481234	481244	481254	481264	481274	481284	481294	481304
481190	481200	481210	481220	481230	481240	481250	481260	481270	481280	481290	481300	481310
481194	481204	481214	481224	481234	481244	481254	481264	481274	481284	481294	481304	481314
481200	481210	481220	481230	481240	481250	481260	481270	481280	481290	481300	481310	481320
481204	481214	481224	481234	481244	481254	481264	481274	481284	481294	481304	481314	481324
481210	481220	481230	481240	481250	481260	481270	481280	481290	481300	481310	481320	481330
481214	481224	481234	481244	481254	481264	481274	481284	481294	481304	481314	481324	481334
481220	481230	481240	481250	481260	481270	481280	481290	481300	481310	481320	481330	481340
481224	481234	481244	481254	481264	481274	481284	481294	481304	481314	481324	481334	481344
481230	481240	481250	481260	481270	481280	481290	481300	481310	481320	481330	481340	481350
481234	481244	481254	481264	481274	481284	481294	481304	481314	481324	481334	481344	481354
481240	481250	481260	481270	481280	481290	481300	481310	481320	481330	481340	481350	481360
481244	481254	481264	481274	481284	481294	481304	481314	481324	481334	481344	481354	481364
481250	481260	481270	481280	481290	481300	481310	481320	481330	481340	481350	481360	481370
481254	481264	481274	481284	481294	481304	481314	481324	481334	481344	481354	481364	481374
481260	481270	481280	481290	481300	481310	481320	481330	481340	481350	481360	481370	481380
481264	481274	481284	481294	481304	481314	481324	481334	481344	481354	481364	481374	481384
481270	481280	481290	481300	481310	481320	481330	481340	481350	481360	481370	481380	481390
481274	481284	481294	481304	481314	481324	481334	481344	481354	481364	481374	481384	481394
481280	481290	481300	481310	481320	481330	481340	481350	481360	481370	481380	481390	481400
481284	481294	481304	481314	481324	481334	481344	481354	481364	481374	481384	481394	481404
481290	481300	481310	481320	481330	481340	481350	481360	481370	481380	481390	481400	481410
481294	481304	481314	481324	481334	481344	481354	481364	481374	481384	481394	481404	481414
481300	481310	481320	481330	481340	481350	481360	481370	481380	481390	481400	481410	481420
481304	481314	481324	481334	481344	481354	481364	481374	481384	481394	481404	481414	481424
481310	481320	481330	481340	481350	481360	481370	481380	481390	481400	481410	481420	481430
481314	481324	481334	481344	481354	481364	481374	481384	481394	481404	481414	481424	481434
481320	481330	481340	481350	481360	481370	481380	481390	481400	481410	481420	481430	481440
481324	481334	481344	481354	481364	481374	481384	481394	481404	481414	481424	481434	481444
481330	481340	481350	481360	481370	481380	481390	481400	481410	481420	481430	481440	481450
481334	481344	481354	481364	481374	481384	481394	481404	481414	481424	481434	481444	481454
481340	481350	481360	481370	481380	481390	481400	481410	481420	481430	481440	481450	481460
481344	481354	481364	481374	481384	481394	481404	481414	481424	481434	481444	481454	481464
481350	481360	481370	481380	481390	481400	481410	481420	481430	481440	481450	481460	481470
481354	481364	481374	481384	481394	481404	481414	481424	481434	481444	481454	481464	481474
481360	481370	481380	481390	481400	481410	481420	481430	481440	481450	481460	481470	481480
481364	481374	481384	481394	481404	481414	481424	481434	481444	481454	481464	481474	481484
481370	481380	481390	481400	481410	481420	481430	481440	481450	481460	481470	481480	481490
481374	481384	481394	481404	481414	481424	481434	481444	481454	481464	481474	481484	481494
481380	481390	481400	481410	481420	481430	481440	481450	481460	481470	481480	481490	481500
481384	481394	481404	481414	481424	481434	481444	481454	481464	481474	481484	481494	481504
481390	481400	481410	481420	481430	481440	481450	481460	481470	481480	481490	481500	481510
481394	481404	481414	481424	481434	481444	481454	481464	481474	481484	481494	481504	481514
481400	481410	481420	481430	481440	481450	481460	481470	481480	481490	481500	481510	481520
481404	481414	481424	481434	481444	481454	481464	481474	481484	481494	481504	481514	481524
481410	481420	481430	481440	481450	481460	481470	481480	481490	481500	481510	481520	481530
481414	481424	481434	481444	481454	481464	481474	481484	481494	481504	481514	481524	481534
481420	481430	481440	481450	481460	481470	481480	481490	481500	481510	481520	481530	481540
481424	481434	481444	481454	481464	481474	481484	481494	481504	481514	481524	481534	481544
481430	481440	481450	481460	481470	481480	481490	481500	481510	481520	481530	481540	481550
481434	481444	481454	481464	481474	481484	481494	481504	481514	481524	481534	481544	481554
481440	481450	481460	481470	481480	481490	481500	481510	481520	481530	481540	481550	481560
481444	481454	481464	481474	481484	481494	481504	481514	481524	481534	481544	481554	481564
481450	481460	481470	481480	481490	481500	481510	481520	481530	481540	481550	481560	481570
481454	481464	481474	481484	481494	481504	481514	481524	481534	481544	481554	481564	481574
481460	481470	481480	481490	481500	481510	481520	481530	481540	481550	481560	481570	481580
481464	481474	481484	481494	481504	481514	481524	481534	481544	481554	481564	481574	481584
481470	481480	481490	481500	481510	481520	481530	481540	481550	481560	481570	481580	481590
481474	481484	481494	481504	481514	481524	481534	481544	481554	481564	481574	481584	481594
481480	481490	481500	481510	481520	481530	481540	481550	481560	481570	481580	481590	481600
481484	481494	481504	481514	481524	481534	481544	481554	481564	481574	481584	4815	