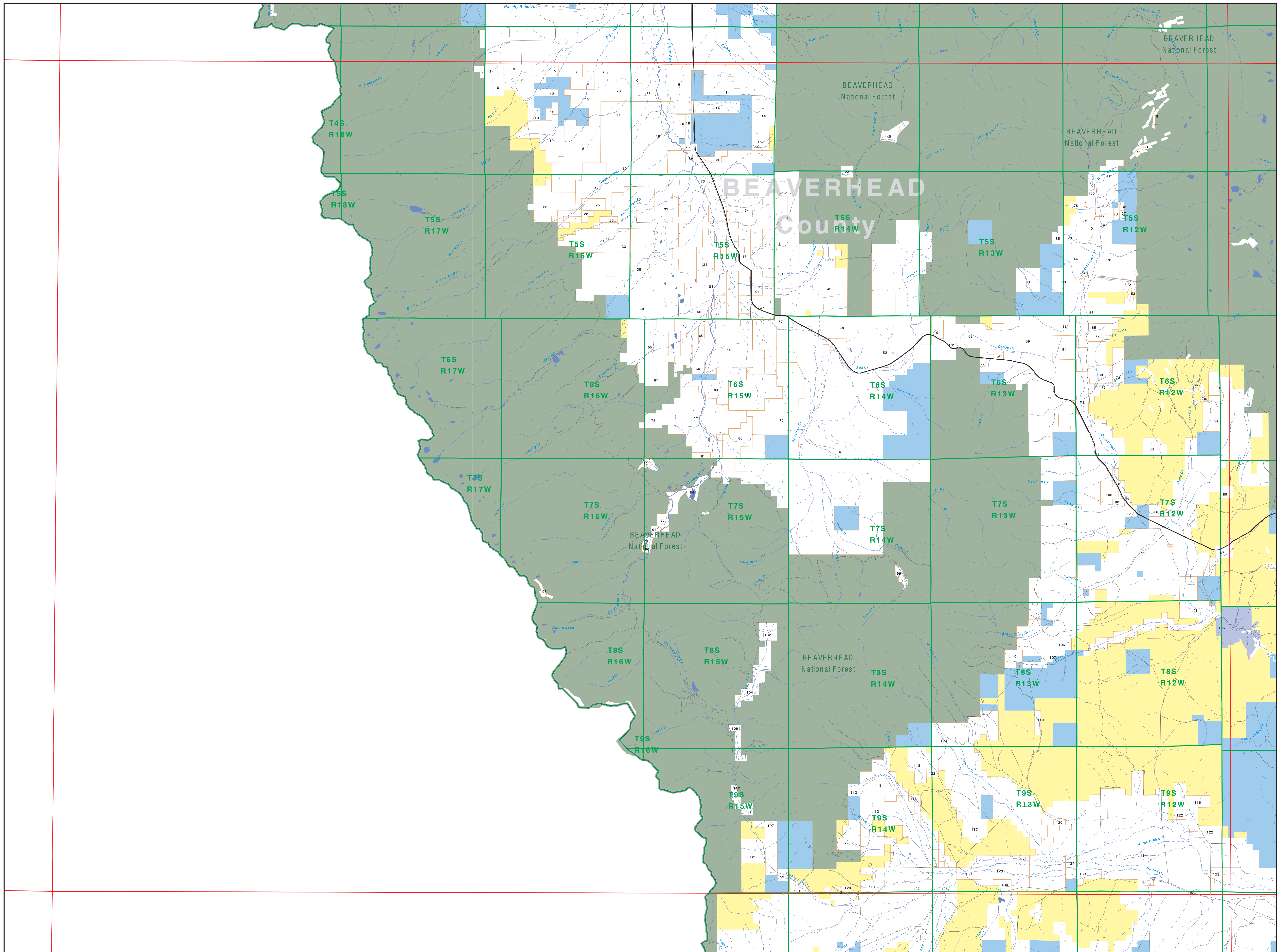
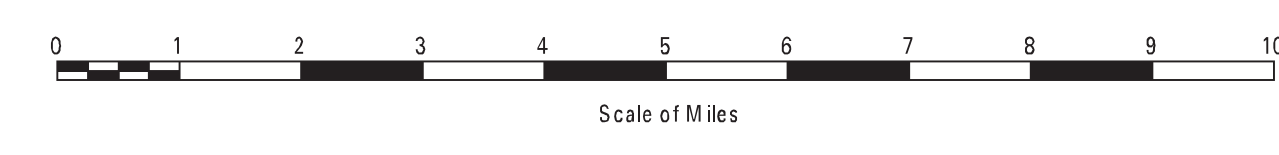


Private Land Ownership Identification

SALMON - (45113a)



- Private
- Bureau of Land Management
- U.S. Forest Service
- National Park Service
- U.S. Fish and Wildlife Service
- Other Federal Land
- State Trust Lands
- Other State Lands
- Local Govt
- Indian Reservation Boundary
- MT Fish Wildlife & Parks Wildlife Management Area
- Lake/Reservoir
- Interstate
- Secondary Highway
- Highway
- Road
- Primitve Road
- River
- Stream/Creek
- Intermittent Creek
- Township
- County Border



SOURCES / ACKNOWLEDGEMENTS

This map was produced as a joint effort between the MT Dept. of Fish, Wildlife, and Parks (FWP) and the Montana Natural Resource Information System (NRIS) of the MT State Library, in response to Montana Code Annotated 87-3-306, which directs the FWP to "work cooperatively with all state and federal land management agencies... to develop accurate land ownership maps... in the State".

The public land data is from the MT Natural Heritage Program land ownership data collection. Much of this data was originally digitized by the Bureau of Land Management (BLM) from 1:100,000 scale BLM Surface Management Status maps. Additional information, corrections and updates (especially for small lands and private lands) were added by the University of Montana, while Spatial Analysis Unit, during 1996-1998. Since 1998, the Montana Natural Heritage Program has made numerous updates and corrections (especially for state trust lands, Montana Fish, Wildlife & Parks areas, US Fish & Wildlife Service areas, and conservation easements). These edits are based on data supplied by the various public agencies and land trusts, and have not been verified against county or Montana Department of Revenue records.

The private land data were developed for the Montana Cadastral Database Project. These data are provided through a cooperative effort between the Montana Department of Administration (DOA), the Montana Department of Revenue (DOR), other state agencies, local governments, USDI BLM and private enterprise. Lands depicted on this map represent single ownership of contiguous parcels that are at least 40 acres in size. The DOA maintains the GIS cadastral layer and the DOR maintains the private ownership information.

The base scale for the public ownership data is 1:100,000, though many of the recent edits incorporate data digitized from 1:24,000 scale maps or survey data. Private ownership data is accurate to scales of 1:24,000 or smaller.

Map produced August 2012 with ownership data current as of July, 2012.

NOTES:

Not all legend items may appear on this map. Features shown on this map do not imply public access to any lands. The land status data displayed on this map may not be complete and may contain errors in boundary locations and/or coding.

DISCLAIMERS:

The MT Natural Heritage Program, MT State Library, MT Dept. of Administration and MT Dept. of Revenue make no representation or warranties whatsoever with respect to the accuracy or completeness of the data contained in these maps and assumes no responsibility for the suitability of these data for a particular purpose. These agencies will not be liable for any damages incurred as a result of errors displayed here. The ownership boundaries displayed on this map are not based on land survey data and are not a substitute for property surveys. This map displays public and private land ownership information derived from several sources and continues to be corrected and updated.

USGS 100,000 Scale Quadrangle Index

110	48110	48111	48112	48113	48114	48115	48116	48117	48118	48119	48120
111	48121	48122	48123	48124	48125	48126	48127	48128	48129	48130	48131
112	48132	48133	48134	48135	48136	48137	48138	48139	48140	48141	48142
113	48143	48144	48145	48146	48147	48148	48149	48150	48151	48152	48153
114	48154	48155	48156	48157	48158	48159	48160	48161	48162	48163	48164
115	48165	48166	48167	48168	48169	48170	48171	48172	48173	48174	48175
116	48176	48177	48178	48179	48180	48181	48182	48183	48184	48185	48186
117	48187	48188	48189	48190	48191	48192	48193	48194	48195	48196	48197
118	48198	48199	48200	48201	48202	48203	48204	48205	48206	48207	48208
119	48209	48210	48211	48212	48213	48214	48215	48216	48217	48218	48219
120	48220	48221	48222	48223	48224	48225	48226	48227	48228	48229	48230