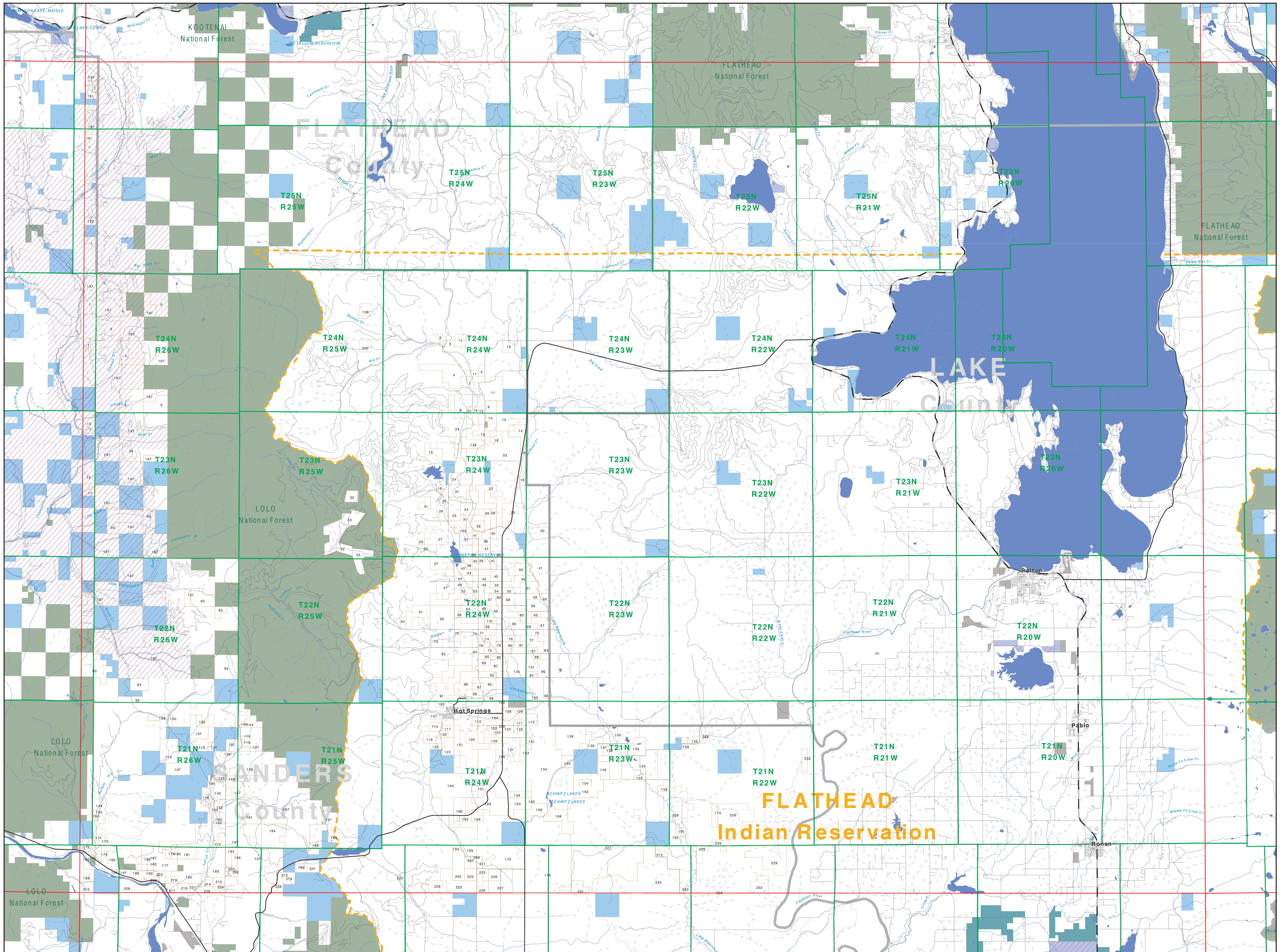
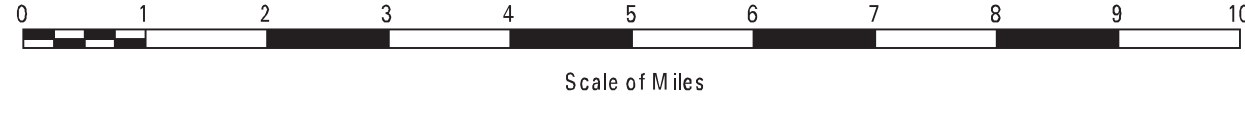


# Private Land Ownership Identification

## POLSON - (47114b)



- Private
- Bureau of Land Management
- U.S. Forest Service
- National Park Service
- U.S. Fish and Wildlife Service
- Other Federal Land
- State Trust Lands
- Other State Lands
- Local Govt
- Indian Reservation Boundary
- MT Fish Wildlife & Parks Wildlife Management Area
- Lake/Reservoir
- Interstate
- Secondary Highway
- Highway
- Road
- Primitive Road
- River
- Stream/Creek
- Intermittent Creek
- Township
- County Border



**SOURCES / ACKNOWLEDGEMENTS**

This map was produced as a joint effort between the MT Dept. of Fish, Wildlife, and Parks (FWP) and the Montana Natural Resource Information System (NRIS) of the MT State Library, in response to Montana Code Annotated 87-3-206, which directs the FWP to "...work cooperatively with all state and federal land management agencies...to develop accurate land ownership maps...in the State".

The public land data is from the MT Natural Heritage Program land ownership data collection. Much of this data was originally digitized by the Bureau of Land Management (BLM) from 1:100,000 scale BLM Surface Management Status maps. Additional information, corrections and updates (especially for small lands and private lands) were added by the University of Montana, while Spatial Analysis Unit, during 1996-1998. Since 1998, the Montana Natural Heritage Program has made numerous updates and corrections to the state trust lands, Montana Fish, Wildlife & Parks areas, US Fish & Wildlife Service areas, and conservation easements. These edits are based on data supplied by the various public agencies and land trusts, and have not been verified against county or Montana Department of Revenue records.

The private land data were developed for the Montana Cadastral Database Project. These data are provided through a cooperative effort between the Montana Department of Administration (DOA), the Montana Department of Revenue (DOR), other state agencies, local governments, USGS BLM and private enterprise. Lands depicted on this map represent single ownership of contiguous parcels that are at least 40 acres in size. The DOA maintains the GIS cadastral layer and the DOR maintains the private ownership information.

The base scale for the public ownership data is 1:100,000, though many of the recent edits incorporate data digitized from 1:24,000 scale maps or survey data. Private ownership data is accurate to scales of 1:24,000 or smaller.

Map produced August 2012 with ownership data current as of July, 2012.

**USGS 100,000 Scale Quadrangle Index**

1140	481130	481140	481150	481160	481170	481180	481190	481200	481210	481220	481230	481240
1141	481154	481164	481174	481184	481194	481204	481214	481224	481234	481244	481254	481264
1142	481158	481168	481178	481188	481198	481208	481218	481228	481238	481248	481258	481268
1143	481162	481172	481182	481192	481202	481212	481222	481232	481242	481252	481262	481272
1144	481166	481176	481186	481196	481206	481216	481226	481236	481246	481256	481266	481276
1145	481170	481180	481190	481200	481210	481220	481230	481240	481250	481260	481270	481280
1146	481174	481184	481194	481204	481214	481224	481234	481244	481254	481264	481274	481284
1147	481178	481188	481198	481208	481218	481228	481238	481248	481258	481268	481278	481288
1148	481182	481192	481202	481212	481222	481232	481242	481252	481262	481272	481282	481292
1149	481186	481196	481206	481216	481226	481236	481246	481256	481266	481276	481286	481296
1150	481190	481200	481210	481220	481230	481240	481250	481260	481270	481280	481290	481300
1151	481194	481204	481214	481224	481234	481244	481254	481264	481274	481284	481294	481304
1152	481198	481208	481218	481228	481238	481248	481258	481268	481278	481288	481298	481308
1153	481202	481212	481222	481232	481242	481252	481262	481272	481282	481292	481302	481312
1154	481206	481216	481226	481236	481246	481256	481266	481276	481286	481296	481306	481316
1155	481210	481220	481230	481240	481250	481260	481270	481280	481290	481300	481310	481320
1156	481214	481224	481234	481244	481254	481264	481274	481284	481294	481304	481314	481324
1157	481218	481228	481238	481248	481258	481268	481278	481288	481298	481308	481318	481328
1158	481222	481232	481242	481252	481262	481272	481282	481292	481302	481312	481322	481332
1159	481226	481236	481246	481256	481266	481276	481286	481296	481306	481316	481326	481336
1160	481230	481240	481250	481260	481270	481280	481290	481300	481310	481320	481330	481340
1161	481234	481244	481254	481264	481274	481284	481294	481304	481314	481324	481334	481344
1162	481238	481248	481258	481268	481278	481288	481298	481308	481318	481328	481338	481348
1163	481242	481252	481262	481272	481282	481292	481302	481312	481322	481332	481342	481352
1164	481246	481256	481266	481276	481286	481296	481306	481316	481326	481336	481346	481356
1165	481250	481260	481270	481280	481290	481300	481310	481320	481330	481340	481350	481360
1166	481254	481264	481274	481284	481294	481304	481314	481324	481334	481344	481354	481364
1167	481258	481268	481278	481288	481298	481308	481318	481328	481338	481348	481358	481368
1168	481262	481272	481282	481292	481302	481312	481322	481332	481342	481352	481362	481372
1169	481266	481276	481286	481296	481306	481316	481326	481336	481346	481356	481366	481376
1170	481270	481280	481290	481300	481310	481320	481330	481340	481350	481360	481370	481380
1171	481274	481284	481294	481304	481314	481324	481334	481344	481354	481364	481374	481384
1172	481278	481288	481298	481308	481318	481328	481338	481348	481358	481368	481378	481388
1173	481282	481292	481302	481312	481322	481332	481342	481352	481362	481372	481382	481392
1174	481286	481296	481306	481316	481326	481336	481346	481356	481366	481376	481386	481396
1175	481290	481300	481310	481320	481330	481340	481350	481360	481370	481380	481390	481400
1176	481294	481304	481314	481324	481334	481344	481354	481364	481374	481384	481394	481404
1177	481298	481308	481318	481328	481338	481348	481358	481368	481378	481388	481398	481408
1178	481302	481312	481322	481332	481342	481352	481362	481372	481382	481392	481402	481412
1179	481306	481316	481326	481336	481346	481356	481366	481376	481386	481396	481406	481416
1180	481310	481320	481330	481340	481350	481360	481370	481380	481390	481400	481410	481420
1181	481314	481324	481334	481344	481354	481364	481374	481384	481394	481404	481414	481424
1182	481318	481328	481338	481348	481358	481368	481378	481388	481398	481408	481418	481428
1183	481322	481332	481342	481352	481362	481372	481382	481392	481402	481412	481422	481432
1184	481326	481336	481346	481356	481366	481376	481386	481396	481406	481416	481426	481436
1185	481330	481340	481350	481360	481370	481380	481390	481400	481410	481420	481430	481440
1186	481334	481344	481354	481364	481374	481384	481394	481404	481414	481424	481434	481444
1187	481338	481348	481358	481368	481378	481388	481398	481408	481418	481428	481438	481448
1188	481342	481352	481362	481372	481382	481392	481402	481412	481422	481432	481442	481452
1189	481346	481356	481366	481376	481386	481396	481406	481416	481426	481436	481446	481456
1190	481350	481360	481370	481380	481390	481400	481410	481420	481430	481440	481450	481460
1191	481354	481364	481374	481384	481394	481404	481414	481424	481434	481444	481454	481464
1192	481358	481368	481378	481388	481398	481408	481418	481428	481438	481448	481458	481468
1193	481362	481372	481382	481392	481402	481412	481422	481432	481442	481452	481462	481472
1194	481366	481376	481386	481396	481406	481416	481426	481436	481446	481456	481466	481476
1195	481370	481380	481390	481400	481410	481420	481430	481440	481450	481460	481470	481480
1196	481374	481384	481394	481404	481414	481424	481434	481444	481454	481464	481474	481484
1197	481378	481388	481398	481408	481418	481428	481438	481448	481458	481468	481478	481488
1198	481382	481392	481402	481412	481422	481432	481442	481452	481462	481472	481482	481492
1199	481386	481396	481406	481416	481426	481436	481446	481456	481466	481476	481486	481496
1200	481390	481400	481410	481420	481430	481440	481450	481460	481470	481480	481490	481500
1201	481394	481404	481414	481424	481434	481444	481454	481464	481474	481484	481494	481504
1202	481398	481408	481418	481428	481438	481448	481458	481468	481478	481488	481498	481508
1203	481402	481412	481422	481432	481442	481452	481462	481472	481482	481492	481502	481512
1204	481406	481416	481426	481436	481446	481456	481466	481476	481486	481496	481506	481516
1205	481410	481420	481430	481440	481450	481460	481470	481480	481490	481500	481510	481520
1206	481414	481424	481434	481444	481454	481464	481474	481484	481494	481504	481514	481524
1207	481418	481428	481438	481448	481458	481468	481478	481488	481498	481508	481518	481528
1208	481422	481432	481442	481452	481462	481472	481482	481492	481502	481512	481522	481532
1209	481426	481436	481446	481456	481466	481476	481486	481496	481506	481516	481526	481536
1210	481430	481440	481450	481460	481470	481480	481490	481500	481510	481520	481530	481540