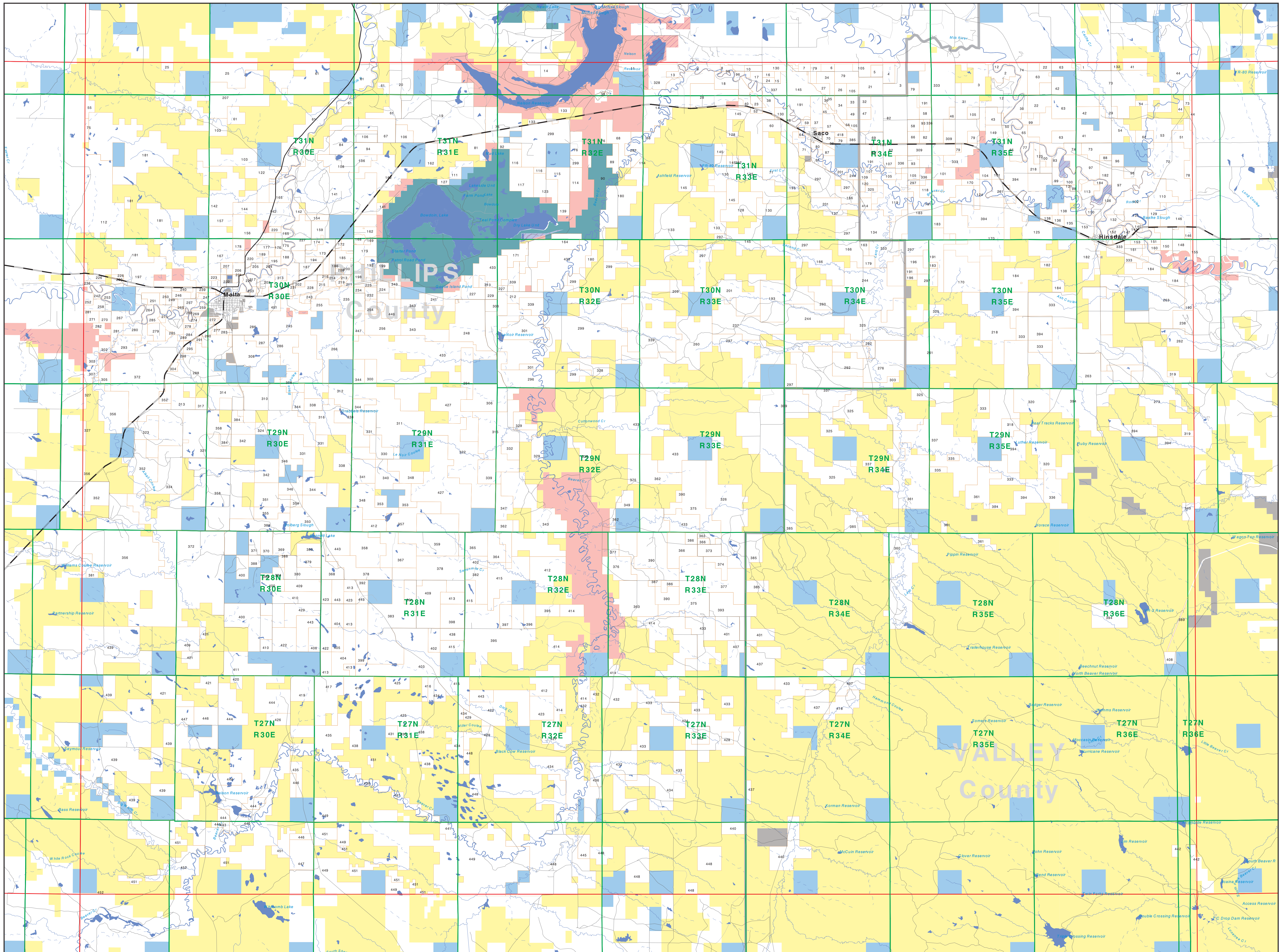
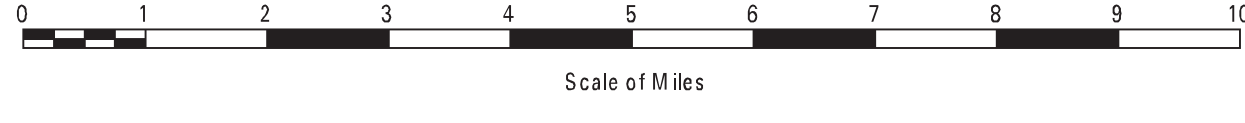


# Private Land Ownership Identification

## MALTA - (48107a)



- Private
- Bureau of Land Management
- U.S. Forest Service
- National Park Service
- U.S. Fish and Wildlife Service
- Other Federal Land
- State Trust Lands
- Other State Lands
- Local Govt
- Indian Reservation Boundary
- MT Fish Wildlife & Parks Wildlife Management Area
- Lake/Reservoir
- Interstate
- Secondary Highway
- Highway
- Road
- Primitive Road
- River
- Stream/Creek
- Intermittent Creek
- Township
- County Border



**SOURCES/ACKNOWLEDGEMENTS**

This map was produced as a joint effort between the MT Dept. of Fish, Wildlife, and Parks (FWP) and the Montana Natural Resource Information System (NRIS) of the MT State Library, in response to Montana Code Annotated 87-3-306, which directs the FWP to "...work cooperatively with all state and federal land management agencies...to develop accurate land ownership maps...in the State".

The public land data is from the MT Natural Heritage Program land ownership data collection. Much of this data was originally digitized by the Bureau of Land Management (BLM) from 1:100,000 scale BLM Surface Management Status maps. Additional information, corrections and updates (especially for small lands and private lands) were added by the University of Montana, Wildlife Spatial Analysis Unit, during 1996-1998. Since 1998, the Montana Natural Heritage Program has made numerous updates and corrections (especially for state trust lands, Montana Fish, Wildlife & Parks areas, US Fish & Wildlife Service areas, and conservation easements). These updates are based on data supplied by the various public agencies and land trusts, and have not been verified against county or Montana Department of Revenue records.

The private land data were developed for the Montana Cadastral Database Project. These data are provided through a cooperative effort between the Montana Department of Administration (DDA), the Montana Department of Revenue (DOR), other state agencies, local governments, USDOI BLM and private enterprise. Lands depicted on this map represent single ownership of contiguous parcels that are at least 40 acres in size. The DDA maintains the GIS cadastral layer and the DOR maintains the private ownership information.

The base scale for the public ownership data is 1:100,000, though many of the recent edits incorporate data digitized from 1:24,000 scale maps or survey data. Private ownership data is accurate to scales of 1:24,000 or smaller.

Map produced August 2012 with ownership data current as of July, 2012.

**USGS 100,000 Scale Quadrangle Index**

1100	481100	481120	481140	481160	481180	481200	481220	481240	481260
1104	481104	481124	481144	481164	481184	481204	481224	481244	481264
1108	481108	481128	481148	481168	481188	481208	481228	481248	481268
1112	481112	481132	481152	481172	481192	481212	481232	481252	481272
1116	481116	481136	481156	481176	481196	481216	481236	481256	481276
1120	481120	481140	481160	481180	481200	481220	481240	481260	481280
1124	481124	481144	481164	481184	481204	481224	481244	481264	481284
1128	481128	481148	481168	481188	481208	481228	481248	481268	481288
1132	481132	481152	481172	481192	481212	481232	481252	481272	481292
1136	481136	481156	481176	481196	481216	481236	481256	481276	481296
1140	481140	481160	481180	481200	481220	481240	481260	481280	481300
1144	481144	481164	481184	481204	481224	481244	481264	481284	481304
1148	481148	481168	481188	481208	481228	481248	481268	481288	481308
1152	481152	481172	481192	481212	481232	481252	481272	481292	481312
1156	481156	481176	481196	481216	481236	481256	481276	481296	481316
1160	481160	481180	481200	481220	481240	481260	481280	481300	481320
1164	481164	481184	481204	481224	481244	481264	481284	481304	481324
1168	481168	481188	481208	481228	481248	481268	481288	481308	481328
1172	481172	481192	481212	481232	481252	481272	481292	481312	481332
1176	481176	481196	481216	481236	481256	481276	481296	481316	481336
1180	481180	481200	481220	481240	481260	481280	481300	481320	481340
1184	481184	481204	481224	481244	481264	481284	481304	481324	481344
1188	481188	481208	481228	481248	481268	481288	481308	481328	481348
1192	481192	481212	481232	481252	481272	481292	481312	481332	481352
1196	481196	481216	481236	481256	481276	481296	481316	481336	481356
1200	481200	481220	481240	481260	481280	481300	481320	481340	481360
1204	481204	481224	481244	481264	481284	481304	481324	481344	481364
1208	481208	481228	481248	481268	481288	481308	481328	481348	481368
1212	481212	481232	481252	481272	481292	481312	481332	481352	481372
1216	481216	481236	481256	481276	481296	481316	481336	481356	481376
1220	481220	481240	481260	481280	481300	481320	481340	481360	481380
1224	481224	481244	481264	481284	481304	481324	481344	481364	481384
1228	481228	481248	481268	481288	481308	481328	481348	481368	481388
1232	481232	481252	481272	481292	481312	481332	481352	481372	481392
1236	481236	481256	481276	481296	481316	481336	481356	481376	481396
1240	481240	481260	481280	481300	481320	481340	481360	481380	481400
1244	481244	481264	481284	481304	481324	481344	481364	481384	481404
1248	481248	481268	481288	481308	481328	481348	481368	481388	481408
1252	481252	481272	481292	481312	481332	481352	481372	481392	481412
1256	481256	481276	481296	481316	481336	481356	481376	481396	481416
1260	481260	481280	481300	481320	481340	481360	481380	481400	481420
1264	481264	481284	481304	481324	481344	481364	481384	481404	481424
1268	481268	481288	481308	481328	481348	481368	481388	481408	481428
1272	481272	481292	481312	481332	481352	481372	481392	481412	481432
1276	481276	481296	481316	481336	481356	481376	481396	481416	481436
1280	481280	481300	481320	481340	481360	481380	481400	481420	481440
1284	481284	481304	481324	481344	481364	481384	481404	481424	481444
1288	481288	481308	481328	481348	481368	481388	481408	481428	481448
1292	481292	481312	481332	481352	481372	481392	481412	481432	481452
1296	481296	481316	481336	481356	481376	481396	481416	481436	481456
1300	481300	481320	481340	481360	481380	481400	481420	481440	481460
1304	481304	481324	481344	481364	481384	481404	481424	481444	481464
1308	481308	481328	481348	481368	481388	481408	481428	481448	481468
1312	481312	481332	481352	481372	481392	481412	481432	481452	481472
1316	481316	481336	481356	481376	481396	481416	481436	481456	481476
1320	481320	481340	481360	481380	481400	481420	481440	481460	481480
1324	481324	481344	481364	481384	481404	481424	481444	481464	481484
1328	481328	481348	481368	481388	481408	481428	481448	481468	481488
1332	481332	481352	481372	481392	481412	481432	481452	481472	481492
1336	481336	481356	481376	481396	481416	481436	481456	481476	481496
1340	481340	481360	481380	481400	481420	481440	481460	481480	481500
1344	481344	481364	481384	481404	481424	481444	481464	481484	481504
1348	481348	481368	481388	481408	481428	481448	481468	481488	481508
1352	481352	481372	481392	481412	481432	481452	481472	481492	481512
1356	481356	481376	481396	481416	481436	481456	481476	481496	481516
1360	481360	481380	481400	481420	481440	481460	481480	481500	481520
1364	481364	481384	481404	481424	481444	481464	481484	481504	481524
1368	481368	481388	481408	481428	481448	481468	481488	481508	481528
1372	481372	481392	481412	481432	481452	481472	481492	481512	481532
1376	481376	481396	481416	481436	481456	481476	481496	481516	481536
1380	481380	481400	481420	481440	481460	481480	481500	481520	481540
1384	481384	481404	481424	481444	481464	481484	481504	481524	481544
1388	481388	481408	481428	481448	481468	481488	481508	481528	481548
1392	481392	481412	481432	481452	481472	481492	481512	481532	481552
1396	481396	481416	481436	481456	481476	481496	481516	481536	481556
1400	481400	481420	481440	481460	481480	481500	481520	481540	481560
1404	481404	481424	481444	481464	481484	481504	481524	481544	481564
1408	481408	481428	481448	481468	481488	481508	481528	481548	481568
1412	481412	481432	481452	481472	481492	481512	481532	481552	481572
1416	481416	481436	481456	481476	481496	481516	481536	481556	481576
1420	481420	481440	481460	481480	481500	481520	481540	481560	481580
1424	481424	481444	481464	481484	481504	481524	481544	481564	481584
1428	481428	481448	481468	481488	481508	481528	481548	481568	481588
1432	481432	481452	481472	481492	481512	481532	481552	481572	481592
1436	481436	481456	481476	481496	481516	481536	481556	481576	481596
1440	481440	481460	481480	481500	481520	481540	481560	481580	481600
1444	481444	481464	481484	481504	481524	481544	481564	481584	481604
1448	481448	481468	481488	481508	481528	481548	481568	481588	481608
1452	481452	481472	481492	481512	481532	481552	481572	481592	481612
1456	481456	481476	481496	481516	481536	481556	481576	481596	481616
1460	481460	481480	481500	481520	481540	481560	481580	481600	481620
1464	481464	481484	481504	481524	481544	481564	481584</		