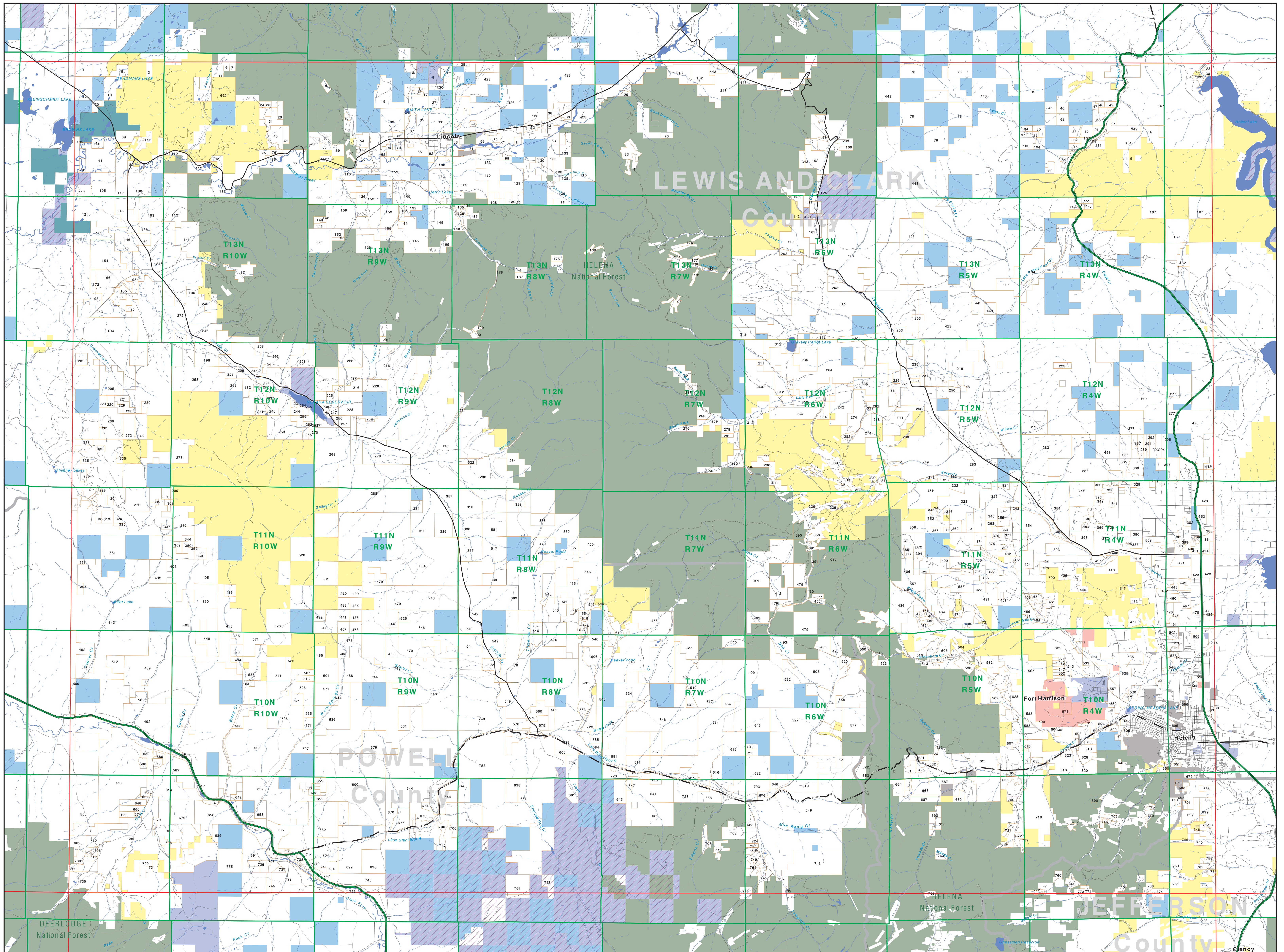


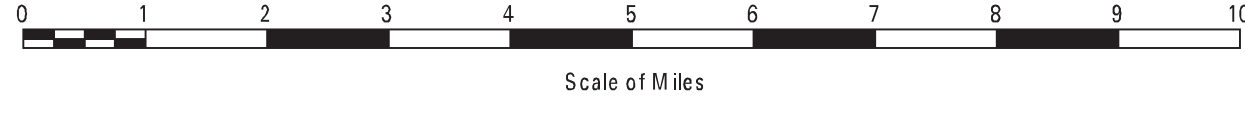
# Private Land Ownership Identification

## ELLISTON - (46112b)



- Private
- Bureau of Land Management
- U.S. Forest Service
- National Park Service
- U.S. Fish and Wildlife Service
- Other Federal Land
- State Trust Lands
- Other State Lands
- Local Govt
- Indian Reservation Boundary
- MT Fish Wildlife & Parks Wildlife Management Area
- Lake/Reservoir

- Interstate
- Secondary Highway
- Highway
- Road
- Primitive Road
- River
- Stream/Creek
- Intermittent Creek
- Township
- County Border



**SOURCES / ACKNOWLEDGEMENTS**  
 This map was produced as a joint effort between the MT Dept. of Fish, Wildlife, and Parks (FWP) and the Montana Natural Resource Information System (NRIS) of the MT State Library, in response to Montana Code Annotated 87-3-306, which directs the FWP to "work cooperatively with all state and federal land management agencies... to develop accurate land ownership maps... in the State".  
 The public land data is from the MT Natural Heritage Program land ownership data collection. Much of this data was originally digitized by the Bureau of Land Management (BLM) from 1:100,000 scale BLM Surface Management Status maps. Additional information, corrections and updates (especially for small lands and private lands) were added by the University of Montana, while Spatial Analysis Unit, during 1996-1998. Since 1998, the Montana Natural Heritage Program has made numerous updates and corrections (especially for state trust lands, Montana Fish, Wildlife & Parks areas, US Fish & Wildlife Service areas, and conservation easements). These edits are based on data supplied by the various public agencies and land trusts, and have not been verified against county or Montana Department of Revenue records.  
 The private land data were developed for the Montana Cadastral Database Project. These data are provided through a cooperative effort between the Montana Department of Administration (DOA), the Montana Department of Revenue (DOR), other state agencies, local governments, USDOI BLM and private enterprise. Lands depicted on this map represent single ownership of contiguous parcels that are at least 40 acres in size. The DOA maintains the GIS cadastral layer and the DOR maintains the private ownership information.  
 The base scale for the public ownership data is 1:100,000, though many of the recent edits incorporate data digitized from 1:24,000 scale maps or survey data. Private ownership data is accurate to scales of 1:24,000 or smaller.  
 Map produced August 2012 with ownership data current as of July, 2012.

**NOTES:**  
 Not all land items may appear on this map.  
 Features shown on this map do not imply public access to any lands.  
 The land status data displayed on this map may not be complete and may contain errors in boundary locations and/or coding.  
**DISCLAIMERS:**  
 The MT Natural Heritage Program, MT State Library, MT Dept. of Administration and MT Dept. of Revenue make no representations or warranties whatsoever with respect to the accuracy or completeness of the data contained in these maps and assume no responsibility for the suitability of these data for a particular purpose. These agencies will not be liable for any damages incurred as a result of errors displayed here. The ownership boundaries displayed on this map are based on land survey data and are not a substitute for property surveys. This map displays public and private land ownership information derived from several sources and continues to be corrected and updated.

**USGS 100,000 Scale Quadrangle Index**

1100	481130	481140	481150	481160	481170	481180	481190	481200	481210	481220	481230	481240
1101	481150	481160	481170	481180	481190	481200	481210	481220	481230	481240	481250	481260
1102	481160	481170	481180	481190	481200	481210	481220	481230	481240	481250	481260	481270
1103	481170	481180	481190	481200	481210	481220	481230	481240	481250	481260	481270	481280
1104	481180	481190	481200	481210	481220	481230	481240	481250	481260	481270	481280	481290
1105	481190	481200	481210	481220	481230	481240	481250	481260	481270	481280	481290	481300
1106	481200	481210	481220	481230	481240	481250	481260	481270	481280	481290	481300	481310
1107	481210	481220	481230	481240	481250	481260	481270	481280	481290	481300	481310	481320
1108	481220	481230	481240	481250	481260	481270	481280	481290	481300	481310	481320	481330
1109	481230	481240	481250	481260	481270	481280	481290	481300	481310	481320	481330	481340
1110	481240	481250	481260	481270	481280	481290	481300	481310	481320	481330	481340	481350
1111	481250	481260	481270	481280	481290	481300	481310	481320	481330	481340	481350	481360
1112	481260	481270	481280	481290	481300	481310	481320	481330	481340	481350	481360	481370
1113	481270	481280	481290	481300	481310	481320	481330	481340	481350	481360	481370	481380
1114	481280	481290	481300	481310	481320	481330	481340	481350	481360	481370	481380	481390
1115	481290	481300	481310	481320	481330	481340	481350	481360	481370	481380	481390	481400
1116	481300	481310	481320	481330	481340	481350	481360	481370	481380	481390	481400	481410
1117	481310	481320	481330	481340	481350	481360	481370	481380	481390	481400	481410	481420
1118	481320	481330	481340	481350	481360	481370	481380	481390	481400	481410	481420	481430
1119	481330	481340	481350	481360	481370	481380	481390	481400	481410	481420	481430	481440
1120	481340	481350	481360	481370	481380	481390	481400	481410	481420	481430	481440	481450
1121	481350	481360	481370	481380	481390	481400	481410	481420	481430	481440	481450	481460
1122	481360	481370	481380	481390	481400	481410	481420	481430	481440	481450	481460	481470
1123	481370	481380	481390	481400	481410	481420	481430	481440	481450	481460	481470	481480
1124	481380	481390	481400	481410	481420	481430	481440	481450	481460	481470	481480	481490
1125	481390	481400	481410	481420	481430	481440	481450	481460	481470	481480	481490	481500
1126	481400	481410	481420	481430	481440	481450	481460	481470	481480	481490	481500	481510
1127	481410	481420	481430	481440	481450	481460	481470	481480	481490	481500	481510	481520
1128	481420	481430	481440	481450	481460	481470	481480	481490	481500	481510	481520	481530
1129	481430	481440	481450	481460	481470	481480	481490	481500	481510	481520	481530	481540
1130	481440	481450	481460	481470	481480	481490	481500	481510	481520	481530	481540	481550
1131	481450	481460	481470	481480	481490	481500	481510	481520	481530	481540	481550	481560
1132	481460	481470	481480	481490	481500	481510	481520	481530	481540	481550	481560	481570
1133	481470	481480	481490	481500	481510	481520	481530	481540	481550	481560	481570	481580
1134	481480	481490	481500	481510	481520	481530	481540	481550	481560	481570	481580	481590
1135	481490	481500	481510	481520	481530	481540	481550	481560	481570	481580	481590	481600
1136	481500	481510	481520	481530	481540	481550	481560	481570	481580	481590	481600	481610
1137	481510	481520	481530	481540	481550	481560	481570	481580	481590	481600	481610	481620
1138	481520	481530	481540	481550	481560	481570	481580	481590	481600	481610	481620	481630
1139	481530	481540	481550	481560	481570	481580	481590	481600	481610	481620	481630	481640
1140	481540	481550	481560	481570	481580	481590	481600	481610	481620	481630	481640	481650
1141	481550	481560	481570	481580	481590	481600	481610	481620	481630	481640	481650	481660
1142	481560	481570	481580	481590	481600	481610	481620	481630	481640	481650	481660	481670
1143	481570	481580	481590	481600	481610	481620	481630	481640	481650	481660	481670	481680
1144	481580	481590	481600	481610	481620	481630	481640	481650	481660	481670	481680	481690
1145	481590	481600	481610	481620	481630	481640	481650	481660	481670	481680	481690	481700
1146	481600	481610	481620	481630	481640	481650	481660	481670	481680	481690	481700	481710
1147	481610	481620	481630	481640	481650	481660	481670	481680	481690	481700	481710	481720
1148	481620	481630	481640	481650	481660	481670	481680	481690	481700	481710	481720	481730
1149	481630	481640	481650	481660	481670	481680	481690	481700	481710	481720	481730	481740
1150	481640	481650	481660	481670	481680	481690	481700	481710	481720	481730	481740	481750
1151	481650	481660	481670	481680	481690	481700	481710	481720	481730	481740	481750	481760
1152	481660	481670	481680	481690	481700	481710	481720	481730	481740	481750	481760	481770
1153	481670	481680	481690	481700	481710	481720	481730	481740	481750	481760	481770	481780
1154	481680	481690	481700	481710	481720	481730	481740	481750	481760	481770	481780	481790
1155	481690	481700	481710	481720	481730	481740	481750	481760	481770	481780	481790	481800
1156	481700	481710	481720	481730	481740	481750	481760	481770	481780	481790	481800	481810
1157	481710	481720	481730	481740	481750	481760	481770	481780	481790	481800	481810	481820
1158	481720	481730	481740	481750	481760	481770	481780	481790	481800	481810	481820	481830
1159	481730	481740	481750	481760	481770	481780	481790	481800	481810	481820	481830	481840
1160	481740	481750	481760	481770	481780	481790	481800	481810	481820	481830	481840	481850
1161	481750	481760	481770	481780	481790	481800	481810	481820	481830	481840	481850	481860
1162	481760	481770	481780	481790	481800	481810	481820	481830	481840	481850	481860	481870
1163	481770	481780	481790	481800	481810	481820	481830	481840	481850	481860	481870	481880
1164	481780	481790	481800	481810	481820	481830	481840	481850	481860	481870	481880	481890
1165	481790	481800	481810	481820	481830	481840	481850	481860	481870	481880	481890	481900
1166	481800	481810	481820	481830	481840	481850	481860	481870	481880	481890	481900	481910
1167	481810	481820	481830	481840	481850	481860	481870	481880	481890	481900	481910	481920
1168	481820	481830	481840	481850	481860	481870	481880	481890	481900	481910	481920	481930
1169	481830	481840	481850	481860	481870	481880	481890	481900	481910	481920	481930	481940
1170	481840	481850	481860	481870	481880	481890	481900	481910	481920	48193		