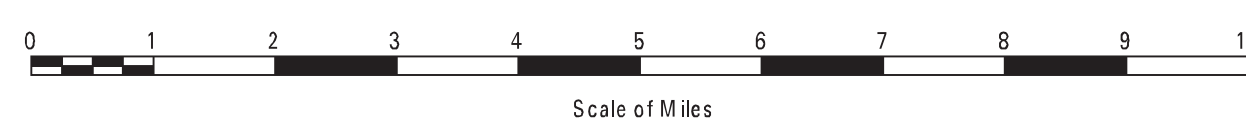
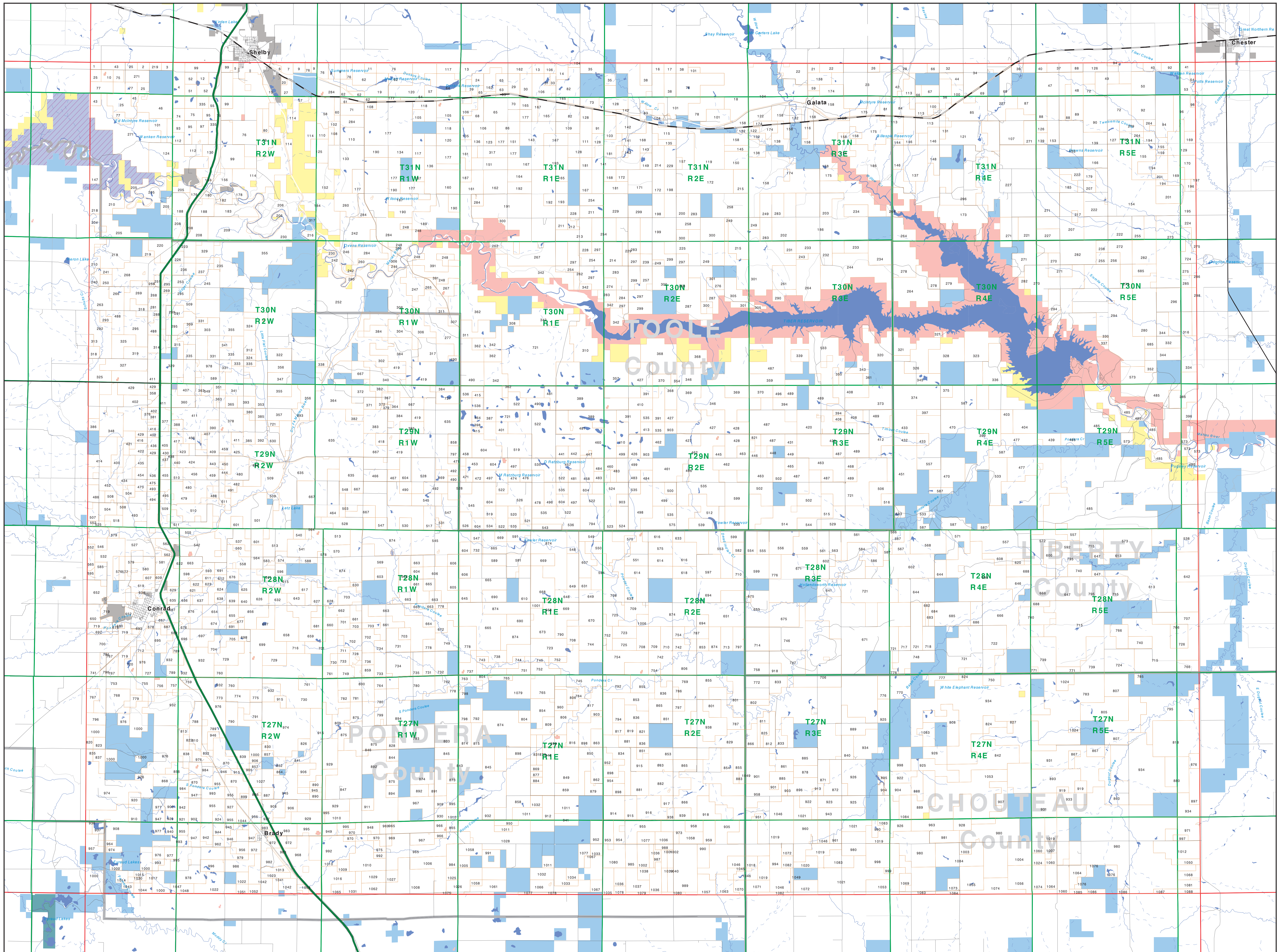


# Private Land Ownership Identification

## CONRAD - (48111a)



**SOURCES / ACKNOWLEDGEMENTS**

This map was produced as a joint effort between the MT Dept. of Fish, Wildlife, and Parks (FWP) and the Montana Natural Resource Information System (NRIS) of the MT State Library, in response to Montana Code Annotated 87-3-206, which directs the FWP to "...work cooperatively with all state and federal land management agencies...to develop accurate land ownership maps...in the State".

The public land data is from the MT Natural Heritage Program land ownership data collection. Much of this data was originally digitized by the Bureau of Land Management (BLM) from 1:100,000 scale BLM Surface Management Status maps. Additional information, corrections and updates (especially for small lands and private lands) were added by the University of Montana, while Spatial Analysis Unit, during 1996-1998. Since 1998, the Montana Natural Heritage Program has made numerous updates and corrections (especially for state trust lands, Montana Fish, Wildlife & Parks areas, US Fish & Wildlife Service areas, and conservation easements). These edits are based on data supplied by the various public agencies and land trusts, and have not been verified against county or Montana Department of Revenue records.

**NOTES:**

Not all land items may appear on this map. Features shown on this map do not imply public access to any lands. The land status data displayed on this map may not be complete and may contain errors in boundary location and/or coding.

**DISCLAIMERS:**

The MT Natural Heritage Program, MT State Library, MT Dept. of Administration and MT Dept. of Environment make no representations or warranties whatsoever with respect to the accuracy or completeness of the data contained in these maps and assume no responsibility for the suitability of these data for a particular purpose. These agencies will not be liable for any damages incurred as a result of errors displayed here. The ownership boundaries displayed on this map are based on land survey data and are not a substitute for property surveys. This map displays public and private land ownership information derived from several sources and continues to be corrected and updated.

**USGS 100,000 Scale Quadrangle Index**

1100	481100	481110	481120	481130	481140	481150	481160	481170	481180	481190	481200
1101	481150	481160	481170	481180	481190	481200	481210	481220	481230	481240	481250
1102	481200	481210	481220	481230	481240	481250	481260	481270	481280	481290	481300
1103	481250	481260	481270	481280	481290	481300	481310	481320	481330	481340	481350
1104	481300	481310	481320	481330	481340	481350	481360	481370	481380	481390	481400
1105	481350	481360	481370	481380	481390	481400	481410	481420	481430	481440	481450
1106	481400	481410	481420	481430	481440	481450	481460	481470	481480	481490	481500
1107	481450	481460	481470	481480	481490	481500	481510	481520	481530	481540	481550
1108	481500	481510	481520	481530	481540	481550	481560	481570	481580	481590	481600
1109	481550	481560	481570	481580	481590	481600	481610	481620	481630	481640	481650
1110	481600	481610	481620	481630	481640	481650	481660	481670	481680	481690	481700