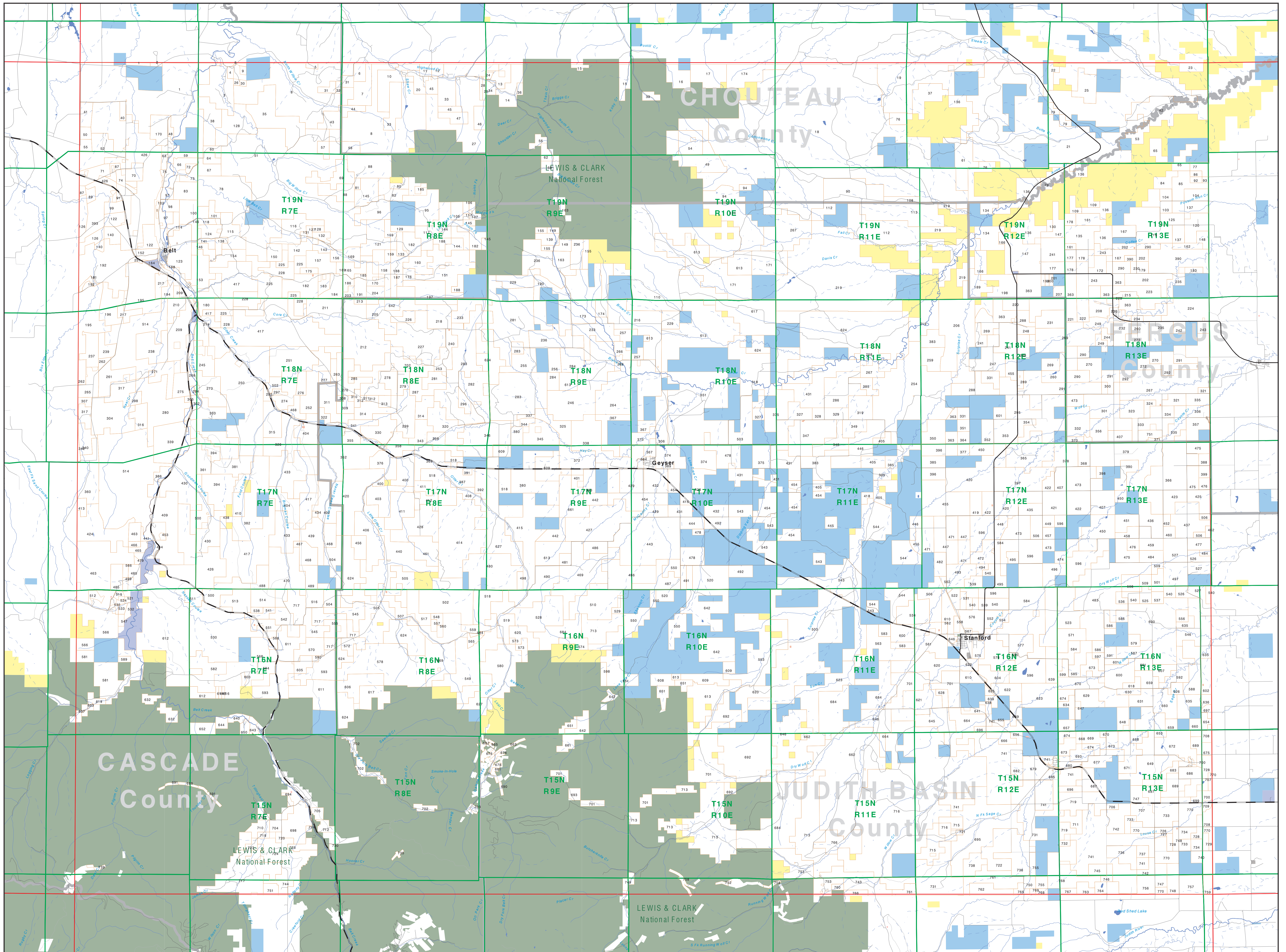
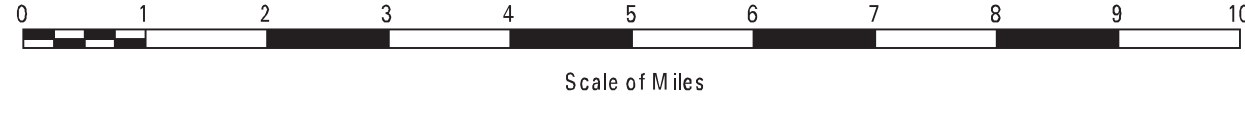


# Private Land Ownership Identification

## BELT - (47110a)



- Private
- Bureau of Land Management
- U.S. Forest Service
- National Park Service
- U.S. Fish and Wildlife Service
- Other Federal Land
- State Trust Lands
- Other State Lands
- Local Govt
- Indian Reservation Boundary
- MT Fish Wildlife & Parks Wildlife Management Area
- Lake/Reservoir
- Interstate
- Secondary Highway
- Highway
- Road
- Primitive Road
- River
- Stream/Creek
- Intermittent Creek
- Township
- County Border



**SOURCES/ACKNOWLEDGEMENTS**  
 This map was produced as a joint effort between the MT Dept. of Fish, Wildlife, and Parks (FWP) and the Montana Natural Resource Information System (NRIS) of the MT State Library, in response to Montana Code Annotated 87-3-306, which directs the FWP to "work cooperatively with all state and federal land management agencies...to develop accurate land ownership maps...in the State".  
 The public land data is from the MT Natural Heritage Program land ownership data collection. Much of this data was originally digitized by the Bureau of Land Management (BLM) from 1:100,000 scale BLM Surface Management Status maps. Additional information, corrections and updates (especially for small lands and private lands) were added by the University of Montana, while Spatial Analysis Unit, during 1990-1998. Since 1998, the Montana Natural Heritage Program has made numerous updates and corrections (especially for state trust lands, Montana Fish, Wildlife & Parks areas, US Fish & Wildlife Service areas, and conservation easements). These updates are based on data supplied by the various public agencies and land trusts, and have not been verified against county or Montana Department of Revenue records.  
**NOTES:**  
 Not all land items may appear on this map.  
 Features shown on this map do not imply public access to any lands.  
 The land status data displayed on this map may not be complete and may contain errors in boundary locations and/or coding.  
**DISCLAIMERS:**  
 The MT Natural Heritage Program, MT State Library, MT Dept. of Administration and MT Dept. of Revenue make no representations or warranties whatsoever with respect to the accuracy or completeness of the data contained in these maps and assume no responsibility for the suitability of these data for a particular purpose. These agencies will not be liable for any damages incurred as a result of errors displayed here. The ownership boundaries displayed on this map are not based on land survey data and are not a substitute for property surveys. This map displays public and private land ownership information derived from several sources and continues to be corrected and updated.

The private land data were developed for the Montana Cadastral Database Project. These data are provided through a cooperative effort between the Montana Department of Administration (DOA), the Montana Department of Revenue (DOR), other state agencies, local governments, USDOI BLM and private enterprises. Lands depicted on this map represent single ownership of contiguous parcels that are at least 40 acres in size. The DOA maintains the GIS cadastral layer and the DOR maintains the private ownership information.  
 The base scale for the public ownership data is 1:100,000, though many of the recent edits incorporate data digitized from 1:24,000 scale maps or survey data. Private ownership data is accurate to scales of 1:24,000 or smaller.  
 Map produced August 2012 with ownership data current as of July, 2012.

USGS 100,000 Scale Quadrangle Index

1140	481130	481140	481150	481160	481170	481180	481190	481200	481210	481220	481230	481240
1141	481131	481141	481151	481161	481171	481181	481191	481201	481211	481221	481231	481241
1142	481132	481142	481152	481162	481172	481182	481192	481202	481212	481222	481232	481242
1143	481133	481143	481153	481163	481173	481183	481193	481203	481213	481223	481233	481243
1144	481134	481144	481154	481164	481174	481184	481194	481204	481214	481224	481234	481244
1145	481135	481145	481155	481165	481175	481185	481195	481205	481215	481225	481235	481245
1146	481136	481146	481156	481166	481176	481186	481196	481206	481216	481226	481236	481246
1147	481137	481147	481157	481167	481177	481187	481197	481207	481217	481227	481237	481247
1148	481138	481148	481158	481168	481178	481188	481198	481208	481218	481228	481238	481248
1149	481139	481149	481159	481169	481179	481189	481199	481209	481219	481229	481239	481249
1150	481140	481150	481160	481170	481180	481190	481200	481210	481220	481230	481240	
1151	481141	481151	481161	481171	481181	481191	481201	481211	481221	481231	481241	
1152	481142	481152	481162	481172	481182	481192	481202	481212	481222	481232	481242	
1153	481143	481153	481163	481173	481183	481193	481203	481213	481223	481233	481243	
1154	481144	481154	481164	481174	481184	481194	481204	481214	481224	481234	481244	
1155	481145	481155	481165	481175	481185	481195	481205	481215	481225	481235	481245	
1156	481146	481156	481166	481176	481186	481196	481206	481216	481226	481236	481246	
1157	481147	481157	481167	481177	481187	481197	481207	481217	481227	481237	481247	
1158	481148	481158	481168	481178	481188	481198	481208	481218	481228	481238	481248	
1159	481149	481159	481169	481179	481189	481199	481209	481219	481229	481239	481249	
1160	481150	481160	481170	481180	481190	481200	481210	481220	481230	481240		
1161	481151	481161	481171	481181	481191	481201	481211	481221	481231	481241		
1162	481152	481162	481172	481182	481192	481202	481212	481222	481232	481242		
1163	481153	481163	481173	481183	481193	481203	481213	481223	481233	481243		
1164	481154	481164	481174	481184	481194	481204	481214	481224	481234	481244		
1165	481155	481165	481175	481185	481195	481205	481215	481225	481235	481245		
1166	481156	481166	481176	481186	481196	481206	481216	481226	481236	481246		
1167	481157	481167	481177	481187	481197	481207	481217	481227	481237	481247		
1168	481158	481168	481178	481188	481198	481208	481218	481228	481238	481248		
1169	481159	481169	481179	481189	481199	481209	481219	481229	481239	481249		
1170	481160	481170	481180	481190	481200	481210	481220	481230	481240			
1171	481161	481171	481181	481191	481201	481211	481221	481231	481241			
1172	481162	481172	481182	481192	481202	481212	481222	481232	481242			
1173	481163	481173	481183	481193	481203	481213	481223	481233	481243			
1174	481164	481174	481184	481194	481204	481214	481224	481234	481244			
1175	481165	481175	481185	481195	481205	481215	481225	481235	481245			
1176	481166	481176	481186	481196	481206	481216	481226	481236	481246			
1177	481167	481177	481187	481197	481207	481217	481227	481237	481247			
1178	481168	481178	481188	481198	481208	481218	481228	481238	481248			
1179	481169	481179	481189	481199	481209	481219	481229	481239	481249			
1180	481170	481180	481190	481200	481210	481220	481230	481240				
1181	481171	481181	481191	481201	481211	481221	481231	481241				
1182	481172	481182	481192	481202	481212	481222	481232	481242				
1183	481173	481183	481193	481203	481213	481223	481233	481243				
1184	481174	481184	481194	481204	481214	481224	481234	481244				
1185	481175	481185	481195	481205	481215	481225	481235	481245				
1186	481176	481186	481196	481206	481216	481226	481236	481246				
1187	481177	481187	481197	481207	481217	481227	481237	481247				
1188	481178	481188	481198	481208	481218	481228	481238	481248				
1189	481179	481189	481199	481209	481219	481229	481239	481249				
1190	481180	481190	481200	481210	481220	481230	481240					
1191	481181	481191	481201	481211	481221	481231	481241					
1192	481182	481192	481202	481212	481222	481232	481242					
1193	481183	481193	481203	481213	481223	481233	481243					
1194	481184	481194	481204	481214	481224	481234	481244					
1195	481185	481195	481205	481215	481225	481235	481245					
1196	481186	481196	481206	481216	481226	481236	481246					
1197	481187	481197	481207	481217	481227	481237	481247					
1198	481188	481198	481208	481218	481228	481238	481248					
1199	481189	481199	481209	481219	481229	481239	481249					
1200	481190	481200	481210	481220	481230	481240						