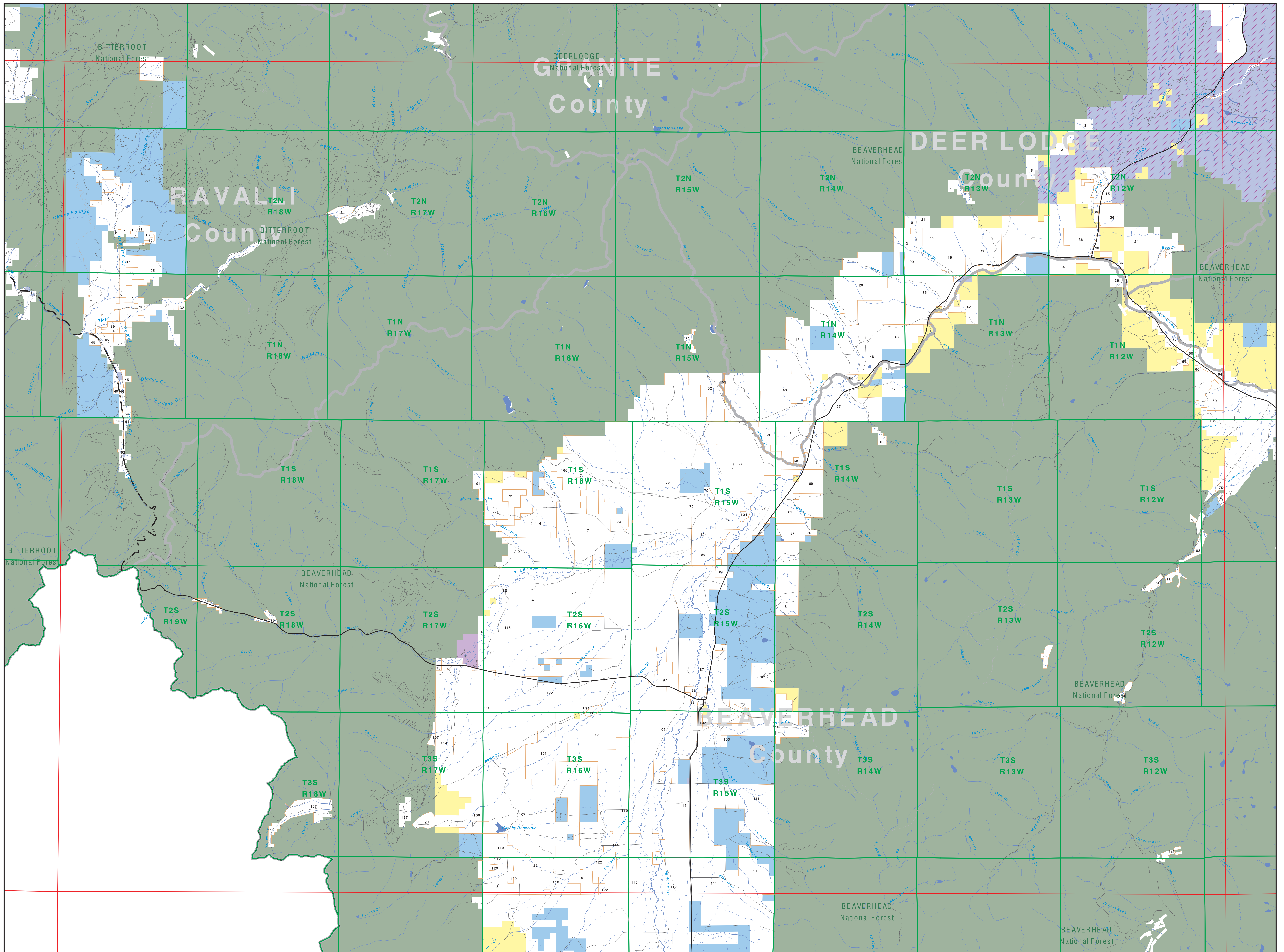
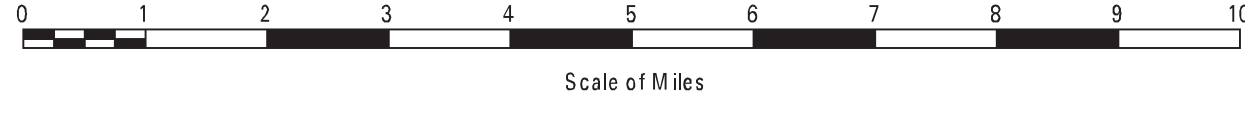


Private Land Ownership Identification WISDOM - (45113b)



- Private
- Bureau of Land Management
- U.S. Forest Service
- National Park Service
- U.S. Fish and Wildlife Service
- Other Federal Land
- State Trust Lands
- Other State Lands
- Local Govt
- Indian Reservation Boundary
- MT Fish Wildlife & Parks Wildlife Management Area
- Interstate
- Secondary Highway
- Highway
- Road
- Primitive Road
- River
- Stream/Creek
- Intermittent Creek
- Township
- County Border
- Lake/Reservoir

NOTES:
Not all legend items may appear on this map. Features shown on this map do not imply public access to any lands. The land status data displayed on this map may not be complete and may contain errors in boundary location and/or coding.
DISCLAIMERS:
The MT Natural Heritage Program, MT State Library, MT Dept of Administration and MT Dept of Revenue make no representations or warranties whatsoever with respect to the accuracy or completeness of the data contained in these maps and assume no responsibility for the suitability of these data for a particular purpose. These agencies will not be liable for any damages incurred as a result of errors displayed here. The ownership boundaries displayed on this map are not based on land survey data and are not a substitute for property surveys. This map displays public and private land ownership information derived from several sources and continues to be corrected and updated.



SOURCES/ACKNOWLEDGEMENTS
This map was produced as a joint effort between the MT Dept. of Fish, Wildlife, and Parks (FWP) and the Montana Natural Resource Information System (NRIS) of the MT State Library, in response to Montana Code Annotated 87-3-306, which directs the FWP to "...work cooperatively with all state and federal land management agencies...to develop accurate land ownership maps...in the State".
The public land data is from the MT Natural Heritage Program land ownership data collection. Much of this data was originally digitized by the Bureau of Land Management (BLM) from 1:100,000 scale BLM Surface Management Status maps. Additional information, corrections and updates (especially for small lands and private lands) were added by the University of Montana, while Spatial Analysis Unit, during 1996-1998. Since 1998, the Montana Natural Heritage Program has made numerous updates and corrections to the state trust lands, Montana Fish, Wildlife & Parks areas, US Fish & Wildlife Service areas, and conservation easements. These edits are based on data supplied by the various public agencies and land trusts, and have not been verified against county or Montana Department of Revenue records.

The private land data were developed for the Montana Cadastral Database Project. These data are provided through a cooperative effort between the Montana Department of Administration (DOA), the Montana Department of Revenue (DOR), other state agencies, local governments, USDI BLM and private enterprise. Lands depicted on this map represent single ownership of contiguous parcels that are at least 40 acres in size. The DOA maintains the GIS cadastral layer and the DOR maintains the private ownership information.
The base scale for the public ownership data is 1:100,000, though many of the recent edits incorporate data digitized from 1:24,000 scale maps or survey data. Private ownership data is accurate to scales of 1:24,000 or smaller.
Map produced August 2011 with ownership data current as of July, 2011.

USGS 100,000 Scale Quadrangle Index

110	48110	48111	48112	48113	48114	48115	48116	48117	48118	48119	48120	48121	48122	48123	48124
111	48125	48126	48127	48128	48129	48130	48131	48132	48133	48134	48135	48136	48137	48138	48139
112	48140	48141	48142	48143	48144	48145	48146	48147	48148	48149	48150	48151	48152	48153	48154
113	48155	48156	48157	48158	48159	48160	48161	48162	48163	48164	48165	48166	48167	48168	48169
114	48170	48171	48172	48173	48174	48175	48176	48177	48178	48179	48180	48181	48182	48183	48184
115	48185	48186	48187	48188	48189	48190	48191	48192	48193	48194	48195	48196	48197	48198	48199
116	48200	48201	48202	48203	48204	48205	48206	48207	48208	48209	48210	48211	48212	48213	48214
117	48215	48216	48217	48218	48219	48220	48221	48222	48223	48224	48225	48226	48227	48228	48229
118	48230	48231	48232	48233	48234	48235	48236	48237	48238	48239	48240	48241	48242	48243	48244
119	48245	48246	48247	48248	48249	48250	48251	48252	48253	48254	48255	48256	48257	48258	48259
120	48260	48261	48262	48263	48264	48265	48266	48267	48268	48269	48270	48271	48272	48273	48274
121	48275	48276	48277	48278	48279	48280	48281	48282	48283	48284	48285	48286	48287	48288	48289
122	48290	48291	48292	48293	48294	48295	48296	48297	48298	48299	48300	48301	48302	48303	48304
123	48305	48306	48307	48308	48309	48310	48311	48312	48313	48314	48315	48316	48317	48318	48319
124	48320	48321	48322	48323	48324	48325	48326	48327	48328	48329	48330	48331	48332	48333	48334
125	48335	48336	48337	48338	48339	48340	48341	48342	48343	48344	48345	48346	48347	48348	48349
126	48350	48351	48352	48353	48354	48355	48356	48357	48358	48359	48360	48361	48362	48363	48364
127	48365	48366	48367	48368	48369	48370	48371	48372	48373	48374	48375	48376	48377	48378	48379
128	48380	48381	48382	48383	48384	48385	48386	48387	48388	48389	48390	48391	48392	48393	48394
129	48395	48396	48397	48398	48399	48400	48401	48402	48403	48404	48405	48406	48407	48408	48409
130	48410	48411	48412	48413	48414	48415	48416	48417	48418	48419	48420	48421	48422	48423	48424