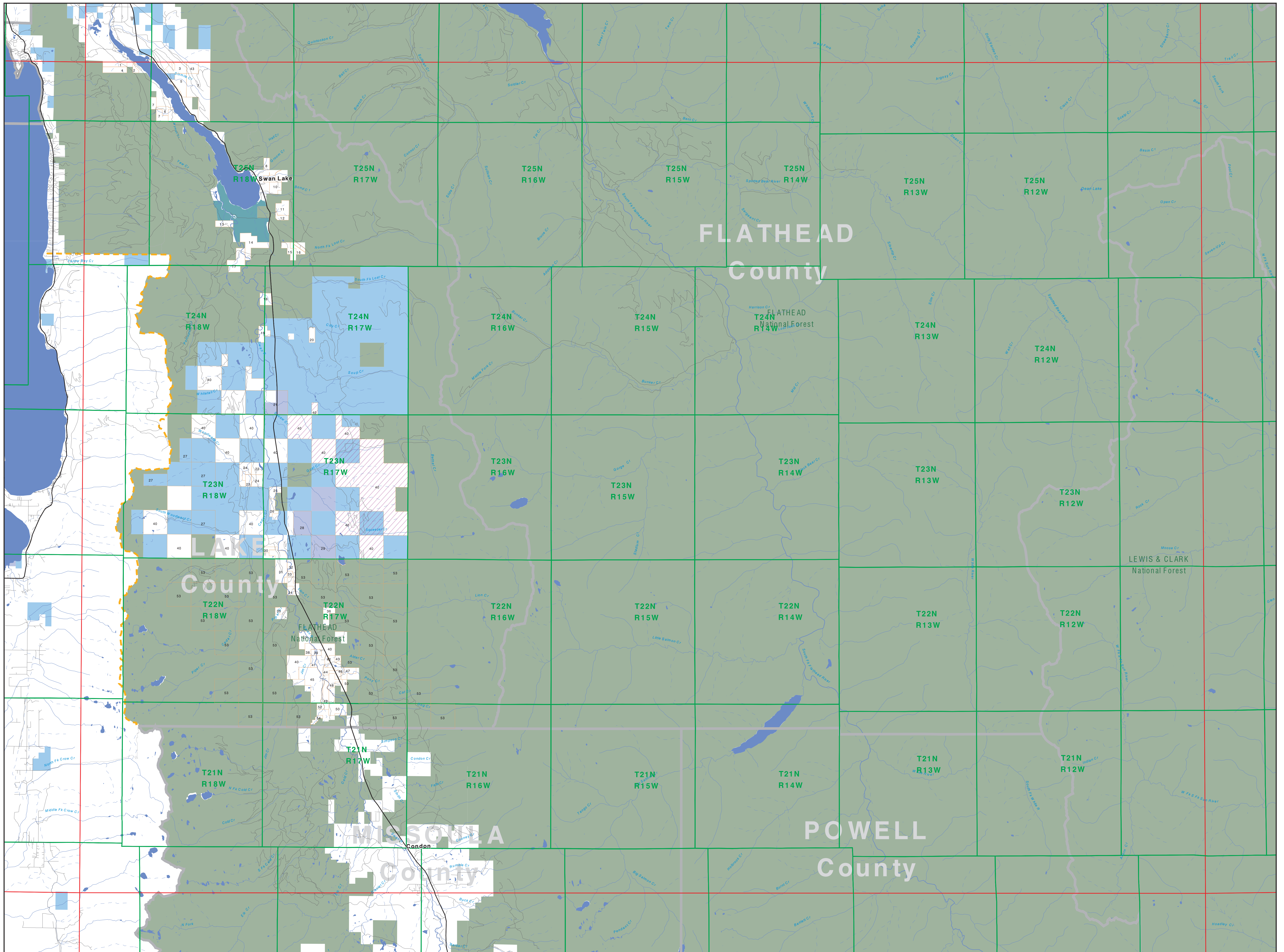


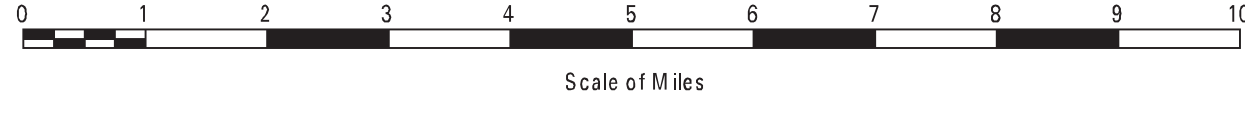
Private Land Ownership Identification

SWAN PEAK - (47113b)



- Private
- Bureau of Land Management
- U.S. Forest Service
- National Park Service
- U.S. Fish and Wildlife Service
- Other Federal Land
- State Trust Lands
- Other State Lands
- Local Govt
- Indian Reservation Boundary
- MT Fish Wildlife & Parks Wildlife Management Area
- Lake/Reservoir
- Interstate
- Secondary Highway
- Highway
- Road
- Primitive Road
- River
- Stream/Creek
- Intermittent Creek
- Township
- County Border

NOTES:
 Not all land items may appear on this map.
 Features shown on this map do not imply public access to any lands.
 The land status data displayed on this map may not be complete and may contain errors in boundary locations and/or coding.
DISCLAIMERS:
 The MT Natural Heritage Program, MT State Library, MT Dept of Administration and MT Dept of Revenue make no representations or warranties whatsoever with respect to the accuracy or completeness of the data contained in these maps and assumes no responsibility for the suitability of these data for a particular purpose. These agencies will not be liable for any damages incurred as a result of errors displayed here. The ownership boundaries displayed on this map are not based on land survey data and are not a substitute for property surveys. This map displays public and private land ownership information derived from several sources and continues to be corrected and updated.



SOURCES / ACKNOWLEDGEMENTS
 This map was produced as a joint effort between the MT Dept. of Fish, Wildlife, and Parks (FWP) and the Montana Natural Resource Information System (NRIS) of the MT State Library, in response to Montana Code Annotated 87-3-306, which directs the FWP to "work cooperatively with all state and federal land management agencies... to develop accurate land ownership maps... in the State".
 The public land data is from the MT Natural Heritage Program land ownership data collection. Much of this data was originally digitized by the Bureau of Land Management (BLM) from 1:100,000 scale BLM Surface Management Status maps. Additional information, corrections and updates (especially for tribal lands and private lands) were added by the University of Montana, while Spatial Analysis Unit, during 1996-1998. Since 1998, the Montana Natural Heritage Program has made numerous updates and corrections (especially for state trust lands, Montana Fish, Wildlife & Parks areas, US Fish & Wildlife Service areas, and conservation easements). These edits are based on data supplied by the various public agencies and land trusts, and have not been verified against county or Montana Department of Revenue records.
 The private land data were developed for the Montana Cadastral Database Project. These data are provided through a cooperative effort between the Montana Department of Administration (DOA), the Montana Department of Revenue (DOR), other state agencies, local governments, USDI BLM and private enterprise. Lands depicted on this map represent single ownership of contiguous parcels that are at least 40 acres in size. The DOA maintains the GIS cadastral layer and the DOR maintains the private ownership information.
 The base scale for the public ownership data is 1:100,000, though many of the recent edits incorporate data digitized from 1:24,000 scale maps or survey data. Private ownership data is accurate to scales of 1:24,000 or smaller.
 Map produced August 2011 with ownership data current as of July, 2011.

USGS 100,000 Scale Quadrangle Index

1100	481100	481110	481120	481130	481140	481150	481160	481170	481180	481190
1101	481150	481160	481170	481180	481190	481200	481210	481220	481230	481240
1102	481200	481210	481220	481230	481240	481250	481260	481270	481280	481290
1103	481250	481260	481270	481280	481290	481300	481310	481320	481330	481340
1104	481300	481310	481320	481330	481340	481350	481360	481370	481380	481390
1105	481350	481360	481370	481380	481390	481400	481410	481420	481430	481440
1106	481400	481410	481420	481430	481440	481450	481460	481470	481480	481490
1107	481450	481460	481470	481480	481490	481500	481510	481520	481530	481540
1108	481500	481510	481520	481530	481540	481550	481560	481570	481580	481590
1109	481550	481560	481570	481580	481590	481600	481610	481620	481630	481640
1110	481600	481610	481620	481630	481640	481650	481660	481670	481680	481690
1111	481650	481660	481670	481680	481690	481700	481710	481720	481730	481740
1112	481700	481710	481720	481730	481740	481750	481760	481770	481780	481790
1113	481750	481760	481770	481780	481790	481800	481810	481820	481830	481840
1114	481800	481810	481820	481830	481840	481850	481860	481870	481880	481890
1115	481850	481860	481870	481880	481890	481900	481910	481920	481930	481940
1116	481900	481910	481920	481930	481940	481950	481960	481970	481980	481990
1117	481950	481960	481970	481980	481990	482000	482010	482020	482030	482040
1118	482000	482010	482020	482030	482040	482050	482060	482070	482080	482090
1119	482050	482060	482070	482080	482090	482100	482110	482120	482130	482140
1120	482100	482110	482120	482130	482140	482150	482160	482170	482180	482190