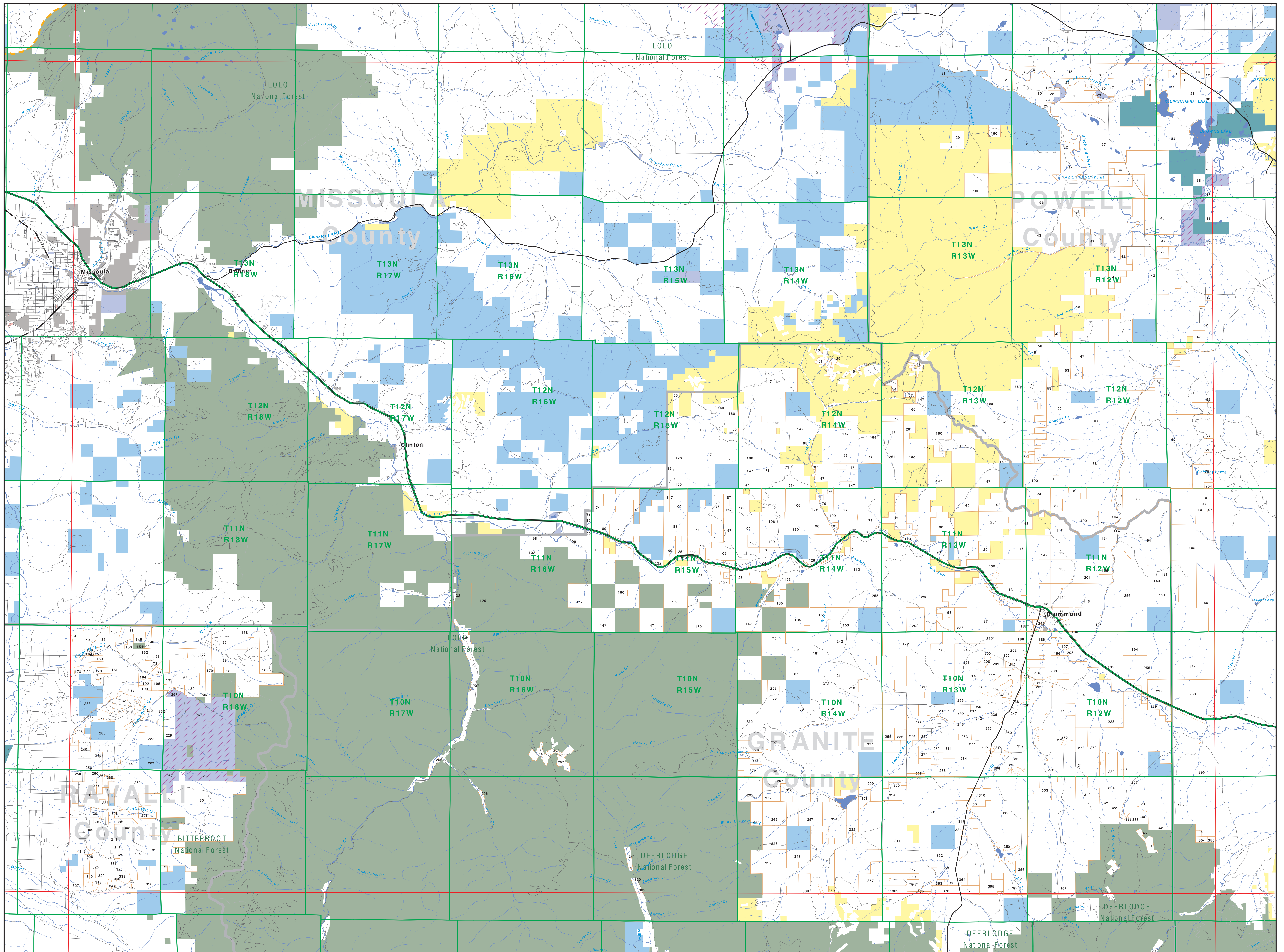


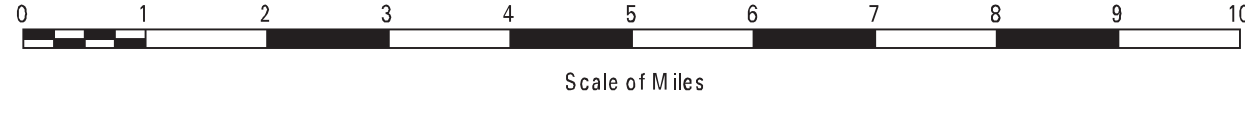
Private Land Ownership Identification

MISSOULA EAST - (46113b)



- Private
- Bureau of Land Management
- U.S. Forest Service
- National Park Service
- U.S. Fish and Wildlife Service
- Other Federal Land
- State Trust Lands
- Other State Lands
- Local Govt
- Indian Reservation Boundary
- MT Fish Wildlife & Parks Wildlife Management Area
- Lake/Reservoir
- Interstate
- Secondary Highway
- Highway
- Road
- Primitive Road
- River
- Stream/Creek
- Intermittent Creek
- Township
- County Border

NOTES:
 Not all land items may appear on this map.
 Features shown on this map do not imply public access to any lands.
 The land status data displayed on this map may not be complete and may contain errors in boundary location and/or land ownership.
DISCLAIMERS:
 The MT Natural Heritage Program, MT State Library, MT Dept. of Administration and MT Dept. of Revenue make no representation or warranty whatsoever with respect to the accuracy or completeness of the data contained in these maps and assume no responsibility for the suitability of these data for a particular purpose. These agencies will not be liable for any damages incurred as a result of errors displayed here. The ownership boundaries displayed on this map are not based on land survey data and are not a substitute for property surveys. This map displays public and private land ownership information derived from several sources and continues to be corrected and updated.



SOURCES/ACKNOWLEDGEMENTS
 This map was produced as a joint effort between the MT Dept. of Fish, Wildlife, and Parks (FWP) and the Montana Natural Resource Information System (NRIS) of the MT State Library, in response to Montana Code Annotated 87-3-306, which directs the FWP to "work cooperatively with all state and federal land management agencies... to develop accurate land ownership maps... in the State".
 The public land data is from the MT Natural Heritage Program land ownership data collection. Much of this data was originally digitized by the Bureau of Land Management (BLM) from 1:100,000 scale BLM Surface Management Status maps. Additional information, corrections and updates (especially for small lands and private lands) were added by the University of Montana, while Spatial Analysis Unit, during 1996-1998. Since 1998, the Montana Natural Heritage Program has made numerous updates and corrections for state trust lands, Montana Fish, Wildlife & Parks areas, US Fish & Wildlife Service areas, and conservation easements. These data are based on data supplied by the various public agencies and land trusts, and have not been verified against county or Montana Department of Revenue records.

The private land data were developed for the Montana Cadastral Database Project. These data are provided through a cooperative effort between the Montana Department of Administration (DOA), the Montana Department of Revenue (DOR), other state agencies, local governments, USDI BLM and private enterprise. Lands depicted on this map represent single ownership of contiguous parcels that are at least 40 acres in size. The DOA maintains the GIS cadastral layer and the DOR maintains the private ownership information.
 The base scale for the public ownership data is 1:100,000, though many of the recent edits incorporate data digitized from 1:24,000 scale maps or survey data. Private ownership data is accurate to scales of 1:24,000 or smaller.
 Map produced August 2011 with ownership data current as of July, 2011.

USGS 100,000 Scale Quadrangle Index

1160	481130	481140	481150	481160	481170	481180	481190	481200	481210	481220	481230	481240
1161	481130	481140	481150	481160	481170	481180	481190	481200	481210	481220	481230	481240
1162	481130	481140	481150	481160	481170	481180	481190	481200	481210	481220	481230	481240
1163	481130	481140	481150	481160	481170	481180	481190	481200	481210	481220	481230	481240
1164	481130	481140	481150	481160	481170	481180	481190	481200	481210	481220	481230	481240
1165	481130	481140	481150	481160	481170	481180	481190	481200	481210	481220	481230	481240
1166	481130	481140	481150	481160	481170	481180	481190	481200	481210	481220	481230	481240
1167	481130	481140	481150	481160	481170	481180	481190	481200	481210	481220	481230	481240
1168	481130	481140	481150	481160	481170	481180	481190	481200	481210	481220	481230	481240
1169	481130	481140	481150	481160	481170	481180	481190	481200	481210	481220	481230	481240
1170	481130	481140	481150	481160	481170	481180	481190	481200	481210	481220	481230	481240
1171	481130	481140	481150	481160	481170	481180	481190	481200	481210	481220	481230	481240
1172	481130	481140	481150	481160	481170	481180	481190	481200	481210	481220	481230	481240
1173	481130	481140	481150	481160	481170	481180	481190	481200	481210	481220	481230	481240
1174	481130	481140	481150	481160	481170	481180	481190	481200	481210	481220	481230	481240
1175	481130	481140	481150	481160	481170	481180	481190	481200	481210	481220	481230	481240
1176	481130	481140	481150	481160	481170	481180	481190	481200	481210	481220	481230	481240
1177	481130	481140	481150	481160	481170	481180	481190	481200	481210	481220	481230	481240
1178	481130	481140	481150	481160	481170	481180	481190	481200	481210	481220	481230	481240
1179	481130	481140	481150	481160	481170	481180	481190	481200	481210	481220	481230	481240
1180	481130	481140	481150	481160	481170	481180	481190	481200	481210	481220	481230	481240
1181	481130	481140	481150	481160	481170	481180	481190	481200	481210	481220	481230	481240
1182	481130	481140	481150	481160	481170	481180	481190	481200	481210	481220	481230	481240
1183	481130	481140	481150	481160	481170	481180	481190	481200	481210	481220	481230	481240
1184	481130	481140	481150	481160	481170	481180	481190	481200	481210	481220	481230	481240
1185	481130	481140	481150	481160	481170	481180	481190	481200	481210	481220	481230	481240
1186	481130	481140	481150	481160	481170	481180	481190	481200	481210	481220	481230	481240
1187	481130	481140	481150	481160	481170	481180	481190	481200	481210	481220	481230	481240
1188	481130	481140	481150	481160	481170	481180	481190	481200	481210	481220	481230	481240
1189	481130	481140	481150	481160	481170	481180	481190	481200	481210	481220	481230	481240
1190	481130	481140	481150	481160	481170	481180	481190	481200	481210	481220	481230	481240
1191	481130	481140	481150	481160	481170	481180	481190	481200	481210	481220	481230	481240
1192	481130	481140	481150	481160	481170	481180	481190	481200	481210	481220	481230	481240
1193	481130	481140	481150	481160	481170	481180	481190	481200	481210	481220	481230	481240
1194	481130	481140	481150	481160	481170	481180	481190	481200	481210	481220	481230	481240
1195	481130	481140	481150	481160	481170	481180	481190	481200	481210	481220	481230	481240
1196	481130	481140	481150	481160	481170	481180	481190	481200	481210	481220	481230	481240
1197	481130	481140	481150	481160	481170	481180	481190	481200	481210	481220	481230	481240
1198	481130	481140	481150	481160	481170	481180	481190	481200	481210	481220	481230	481240
1199	481130	481140	481150	481160	481170	481180	481190	481200	481210	481220	481230	481240
1200	481130	481140	481150	481160	481170	481180	481190	481200	481210	481220	481230	481240