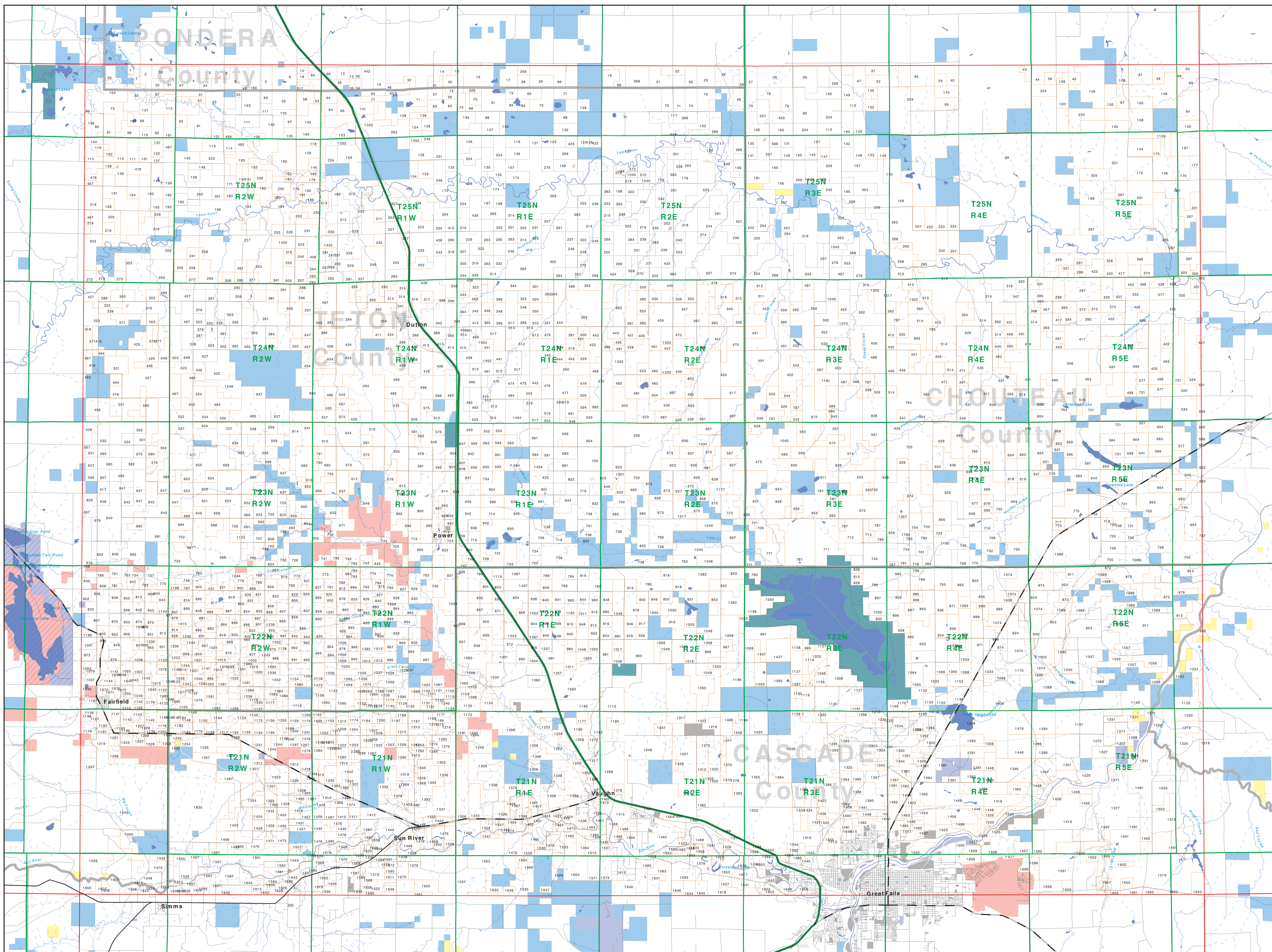
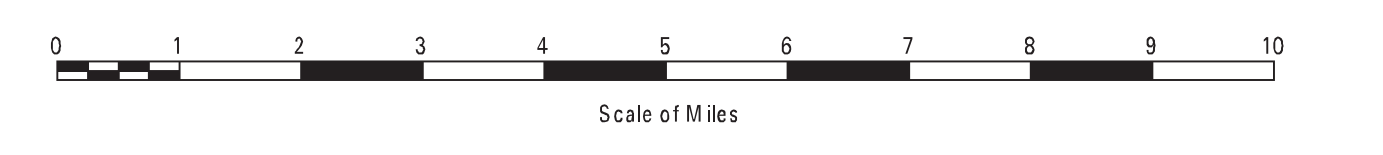


Private Land Ownership Identification GREAT FALLS NORTH - (47111b)



- Private
- Bureau of Land Management
- U.S. Forest Service
- National Park Service
- U.S. Fish and Wildlife Service
- Other Federal Land
- State Trust Lands
- Other State Lands
- Local Govt
- Indian Reservation Boundary
- MT Fish Wildlife & Parks Wildlife Management Area
- Lake/Reservoir
- Interstate
- Secondary Highway
- Highway
- Road
- Primitive Road
- Stream/Creek
- Intermittent Creek
- Township
- County Border



SOURCES / ACKNOWLEDGEMENTS

This map was produced as a joint effort between the MT Dept. of Fish, Wildlife, and Parks (FWP) and the Montana Natural Resource Information System (NRIS) of the MT State Library, in response to Montana Code Annotated 87-3-206, which directs the FWP to "...work cooperatively with all state and federal land management agencies...to develop accurate land ownership maps...in the State".

The public land data is from the MT Natural Heritage Program land ownership data collection. Much of this data was originally digitized by the Bureau of Land Management (BLM) from 1:100,000 scale BLM Surface Management Status maps. Additional information, corrections and updates (especially for state trust lands and private lands) were added by the University of Montana, Wildlife Spatial Analysis Unit, during 1996-1998. Since 1998, the Montana Natural Heritage Program has made numerous updates and corrections (especially for state trust lands, Montana Fish, Wildlife & Parks areas, US Fish & Wildlife Service areas, and conservation easements). These edits are based on data supplied by the various public agencies and land trusts, and have not been verified against county or Montana Department of Revenue records.

NOTES:

Land parcels may appear on this map. Features shown on this map do not imply public access to any lands. The land status data displayed on this map may not be complete and may contain errors in boundary location and/or coding.

DISCLAIMERS:

The MT Natural Heritage Program, MT State Library, MT Dept. of Administration and MT Dept. of Differentiated Services and other agencies or individuals who use this map do so at their own risk. The information on this map is provided as a service to the public and is not a substitute for property surveys. The map displays public and private land ownership information derived from several sources and continues to be corrected and updated.

USGS 100,000 Scale Quadrangle Index

1160	481130	481140	481150	481160	481170	481180	481190	481200	481210	481220	481230	481240
1161	481150	481160	481170	481180	481190	481200	481210	481220	481230	481240	481250	481260
1162	481150	481160	481170	481180	481190	481200	481210	481220	481230	481240	481250	481260
1163	481150	481160	481170	481180	481190	481200	481210	481220	481230	481240	481250	481260
1164	481150	481160	481170	481180	481190	481200	481210	481220	481230	481240	481250	481260
1165	481150	481160	481170	481180	481190	481200	481210	481220	481230	481240	481250	481260
1166	481150	481160	481170	481180	481190	481200	481210	481220	481230	481240	481250	481260
1167	481150	481160	481170	481180	481190	481200	481210	481220	481230	481240	481250	481260
1168	481150	481160	481170	481180	481190	481200	481210	481220	481230	481240	481250	481260
1169	481150	481160	481170	481180	481190	481200	481210	481220	481230	481240	481250	481260
1170	481150	481160	481170	481180	481190	481200	481210	481220	481230	481240	481250	481260
1171	481150	481160	481170	481180	481190	481200	481210	481220	481230	481240	481250	481260
1172	481150	481160	481170	481180	481190	481200	481210	481220	481230	481240	481250	481260
1173	481150	481160	481170	481180	481190	481200	481210	481220	481230	481240	481250	481260
1174	481150	481160	481170	481180	481190	481200	481210	481220	481230	481240	481250	481260
1175	481150	481160	481170	481180	481190	481200	481210	481220	481230	481240	481250	481260
1176	481150	481160	481170	481180	481190	481200	481210	481220	481230	481240	481250	481260
1177	481150	481160	481170	481180	481190	481200	481210	481220	481230	481240	481250	481260
1178	481150	481160	481170	481180	481190	481200	481210	481220	481230	481240	481250	481260
1179	481150	481160	481170	481180	481190	481200	481210	481220	481230	481240	481250	481260
1180	481150	481160	481170	481180	481190	481200	481210	481220	481230	481240	481250	481260
1181	481150	481160	481170	481180	481190	481200	481210	481220	481230	481240	481250	481260
1182	481150	481160	481170	481180	481190	481200	481210	481220	481230	481240	481250	481260
1183	481150	481160	481170	481180	481190	481200	481210	481220	481230	481240	481250	481260
1184	481150	481160	481170	481180	481190	481200	481210	481220	481230	481240	481250	481260
1185	481150	481160	481170	481180	481190	481200	481210	481220	481230	481240	481250	481260
1186	481150	481160	481170	481180	481190	481200	481210	481220	481230	481240	481250	481260
1187	481150	481160	481170	481180	481190	481200	481210	481220	481230	481240	481250	481260
1188	481150	481160	481170	481180	481190	481200	481210	481220	481230	481240	481250	481260
1189	481150	481160	481170	481180	481190	481200	481210	481220	481230	481240	481250	481260
1190	481150	481160	481170	481180	481190	481200	481210	481220	481230	481240	481250	481260
1191	481150	481160	481170	481180	481190	481200	481210	481220	481230	481240	481250	481260
1192	481150	481160	481170	481180	481190	481200	481210	481220	481230	481240	481250	481260
1193	481150	481160	481170	481180	481190	481200	481210	481220	481230	481240	481250	481260
1194	481150	481160	481170	481180	481190	481200	481210	481220	481230	481240	481250	481260
1195	481150	481160	481170	481180	481190	481200	481210	481220	481230	481240	481250	481260
1196	481150	481160	481170	481180	481190	481200	481210	481220	481230	481240	481250	481260
1197	481150	481160	481170	481180	481190	481200	481210	481220	481230	481240	481250	481260
1198	481150	481160	481170	481180	481190	481200	481210	481220	481230	481240	481250	481260
1199	481150	481160	481170	481180	481190	481200	481210	481220	481230	481240	481250	481260
1200	481150	481160	481170	481180	481190	481200	481210	481220	481230	481240	481250	481260