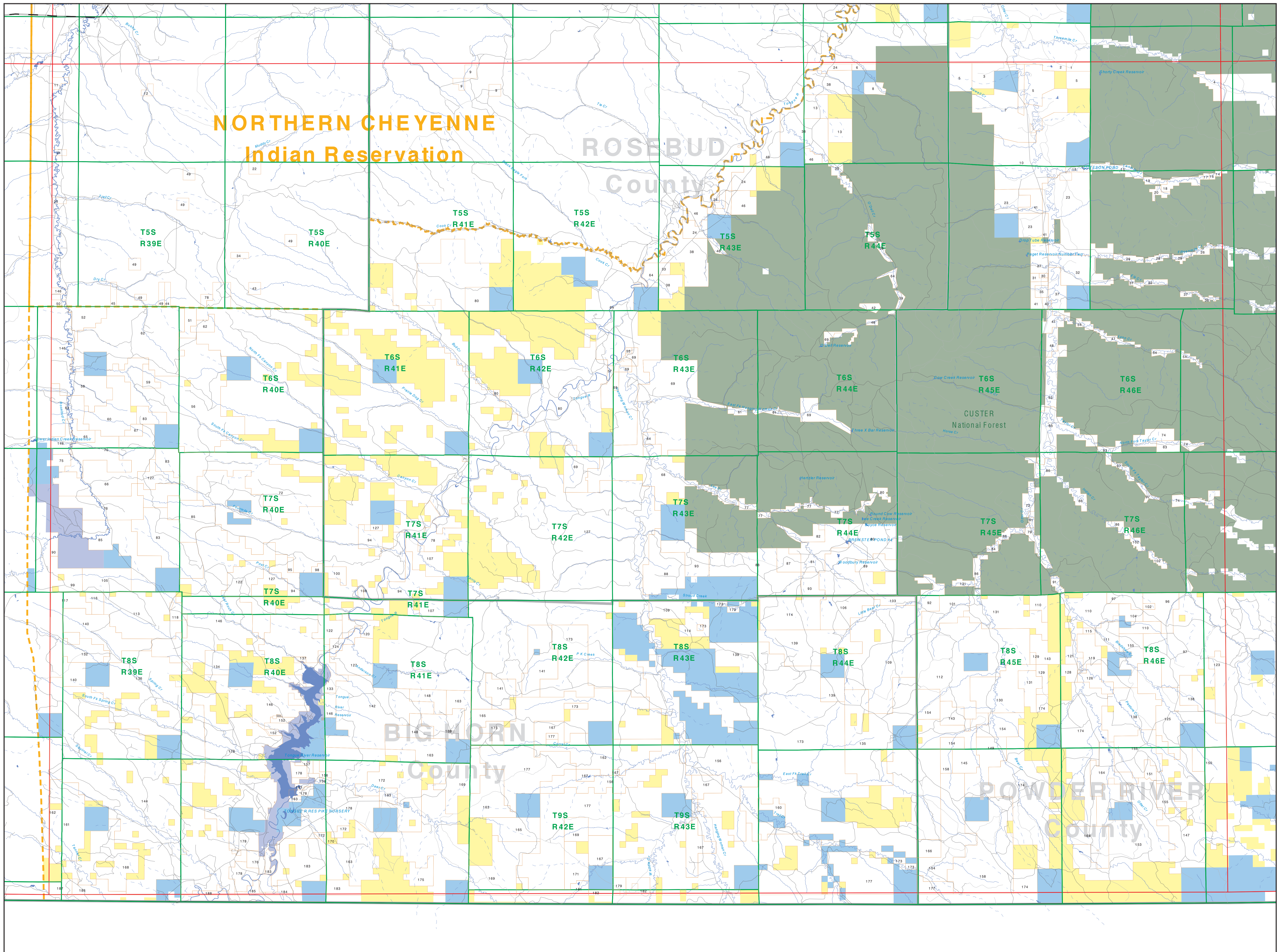


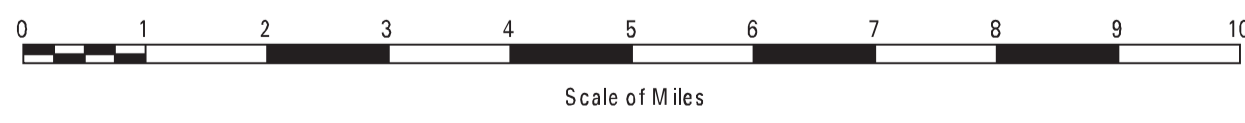
Private Land Ownership Identification

BIRNEY - (45106a)



- Private
- Bureau of Land Management
- U.S. Forest Service
- National Park Service
- U.S. Fish and Wildlife Service
- Other Federal Land
- State Trust Lands
- Other State Lands
- Local Govt
- Indian Reservation Boundary
- MT Fish Wildlife & Parks Wildlife Management Area
- Lake/Reservoir
- Interstate
- Secondary Highway
- Highway
- Road
- Primitive Road
- River
- Stream/Creek
- Intermittent Creek
- Township
- County Border

NOTES:
 Not all land items may appear on this map.
 Features shown on this map do not imply public access to any lands.
 The land status data displayed on this map may not be complete and may contain errors in boundary locations and/or coding.
DISCLAIMERS:
 The MT Natural Heritage Program, MT State Library, MT Dept. of Administration and MT Dept. of Revenue make no representations or warranties whatsoever with respect to the accuracy or completeness of the data contained in these maps and assumes no responsibility for the suitability of these data for a particular purpose. These agencies will not be liable for any damages incurred as a result of errors displayed here. The ownership boundaries displayed on this map are based on land survey data and are not a substitute for property surveys. This map displays public and private land ownership information derived from several sources and continues to be corrected and updated.



SOURCES / ACKNOWLEDGEMENTS
 This map was produced as a joint effort between the MT Dept. of Fish, Wildlife, and Parks (FWP) and the Montana Natural Resource Information System (NRIS) of the MT State Library, in response to Montana Code Annotated 97-3-208, which directs the FWP to "...work cooperatively with all state and federal land management agencies... to develop accurate land ownership maps... in the State".
 The public land data is from the MT Natural Heritage Program land stewardship data collection. Much of this data was originally digitized by the Bureau of Land Management (BLM) from 1:50,000 scale BLM Surface Management Status maps. Additional information, corrections and updates (especially for state trust lands, Montana Fish, Wildlife & Parks areas, US Fish & Wildlife Service areas, and conservation easements). These edits are based on data supplied by the various public agencies and land trusts, and have not been verified against county or Montana Department of Revenue records.

The private land data were developed for the Montana Cadastral Database Project. These data are provided through a cooperative effort between the Montana Department of Administration (DOA), the Montana Department of Revenue (DOR), other state agencies, local governments, USFS BLM and private owners. Lands depicted on this map represent single ownership of contiguous parcels that are at least 40 acres in size. The DOA maintains the GIS cadastral layer and the DOR maintains the private ownership information.
 The base scale for the public ownership data is 1:100,000. Roughly many of the recent edits incorporate data digitized from 1:24,000 scale maps or survey data. Private ownership data is accurate to scales of 1:24,000 or smaller.

Map produced August 2011 with ownership data current as of July, 2011.

USGS 100,000 Scale Quadrangle Index									
1160	481130	481140	481150	481160	481170	481180	481190	481200	481210
1164	481134	481144	481154	481164	481174	481184	481194	481204	481214
160	471150	471160	471170	471180	471190	471200	471210	471220	471230
471158	471168	471178	471188	471198	471208	471218	471228	471238	471248
481130	481140	481150	481160	481170	481180	481190	481200	481210	481220
481134	481144	481154	481164	481174	481184	481194	481204	481214	481224
451040	451050	451060	451070	451080	451090	451100	451110	451120	451130
451044	451054	451064	451074	451084	451094	451104	451114	451124	451134
441130	441140	441150	441160	441170	441180	441190	441200	441210	441220
441134	441144	441154	441164	441174	441184	441194	441204	441214	441224