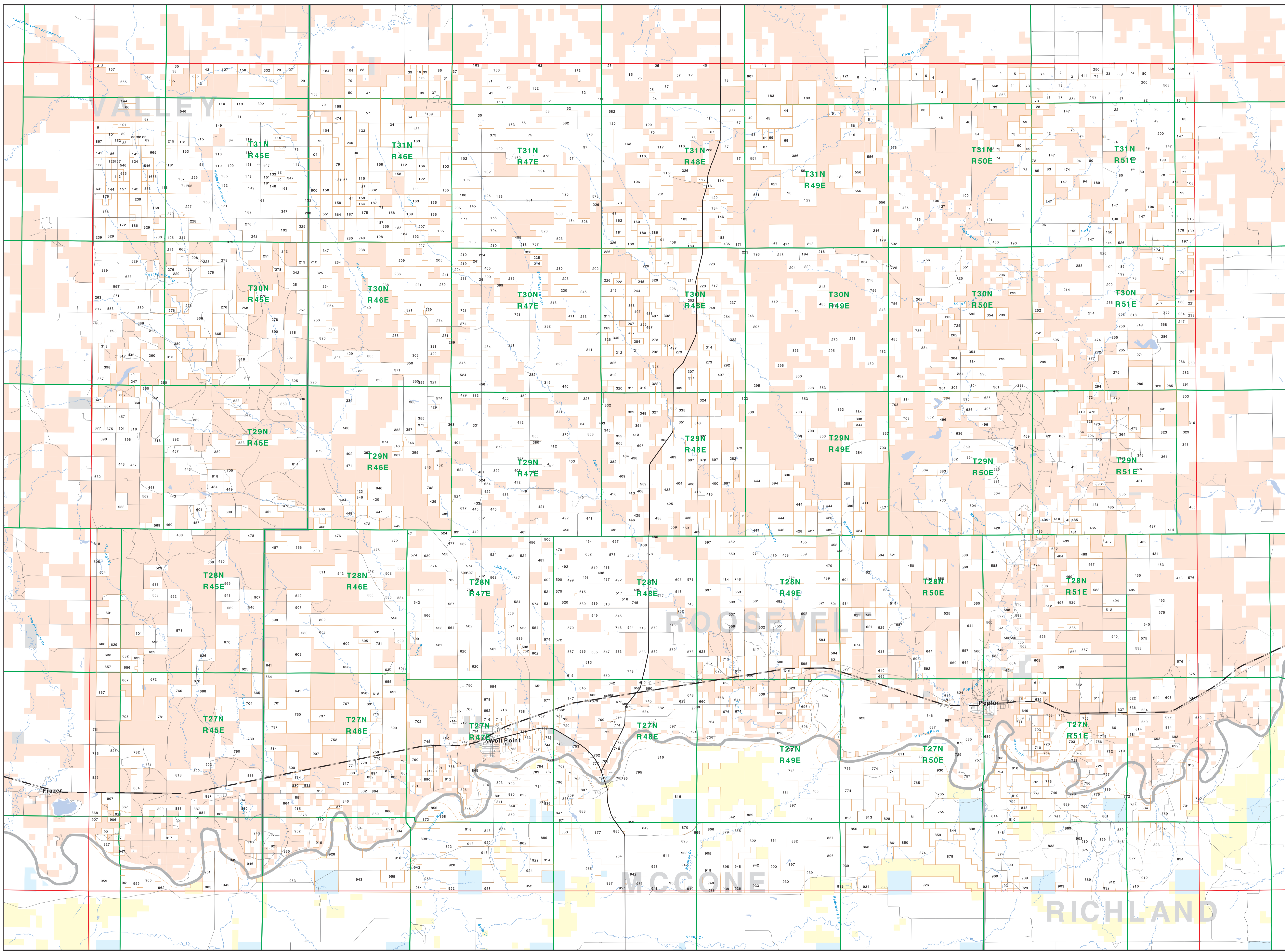


# Private Land Ownership Identification

## WOLF POINT - (48105a)



**Legend**

- Private
- State Lands
- Local Govt
- Native American
- National Park Service
- Other Federal Land
- Fish and Wildlife Service
- Forest Service
- Primitve Road
- River
- Stream/Creek
- Intermittent Creek
- County Border
- Wildlife Management Area
- Highway
- Secondary Highway
- Interstate
- Lake/Reservoir
- County Border
- Wildlife Management Area
- Highway

**NOTES**  
 Not all legends may appear on the map.  
 Parcel numbers on this map do not include public access lands.  
 The parcel status displayed on this map may not be complete and may change over time.  
 DISCLAIMER: The information on this map is provided for informational purposes only. The Montana Department of Fish, Wildlife & Parks does not warrant the accuracy of the information on this map. The user assumes all liability for any damages incurred as a result of using this information. The Montana Department of Fish, Wildlife & Parks is not responsible for any errors or omissions on this map. The Montana Department of Fish, Wildlife & Parks is not responsible for any damages incurred as a result of using this information. The Montana Department of Fish, Wildlife & Parks is not responsible for any errors or omissions on this map.

**SOURCES / ACKNOWLEDGEMENTS**  
 The private land data were developed for the Montana Cadastral Database Project by the Montana Department of Fish, Wildlife & Parks and the Montana Natural Resource Information System (NRIS) of the Montana Department of Natural Resources and Conservation. The Montana Department of Fish, Wildlife & Parks is grateful to the Montana Department of Natural Resources and Conservation for their assistance in the development of this map. The Montana Department of Fish, Wildlife & Parks is grateful to the Montana Department of Natural Resources and Conservation for their assistance in the development of this map.

**Scale of Maps**  
 0 1 2 3 4 5 6 7 8 9 10

**USGS 100,000 Scale Quadrangle Index**

48100	48101	48102	48103	48104	48105	48106	48107	48108	48109	48110
48111	48112	48113	48114	48115	48116	48117	48118	48119	48120	48121
48122	48123	48124	48125	48126	48127	48128	48129	48130	48131	48132
48133	48134	48135	48136	48137	48138	48139	48140	48141	48142	48143
48144	48145	48146	48147	48148	48149	48150	48151	48152	48153	48154
48155	48156	48157	48158	48159	48160	48161	48162	48163	48164	48165
48166	48167	48168	48169	48170	48171	48172	48173	48174	48175	48176
48177	48178	48179	48180	48181	48182	48183	48184	48185	48186	48187
48188	48189	48190	48191	48192	48193	48194	48195	48196	48197	48198
48199	48200	48201	48202	48203	48204	48205	48206	48207	48208	48209
48210	48211	48212	48213	48214	48215	48216	48217	48218	48219	48220