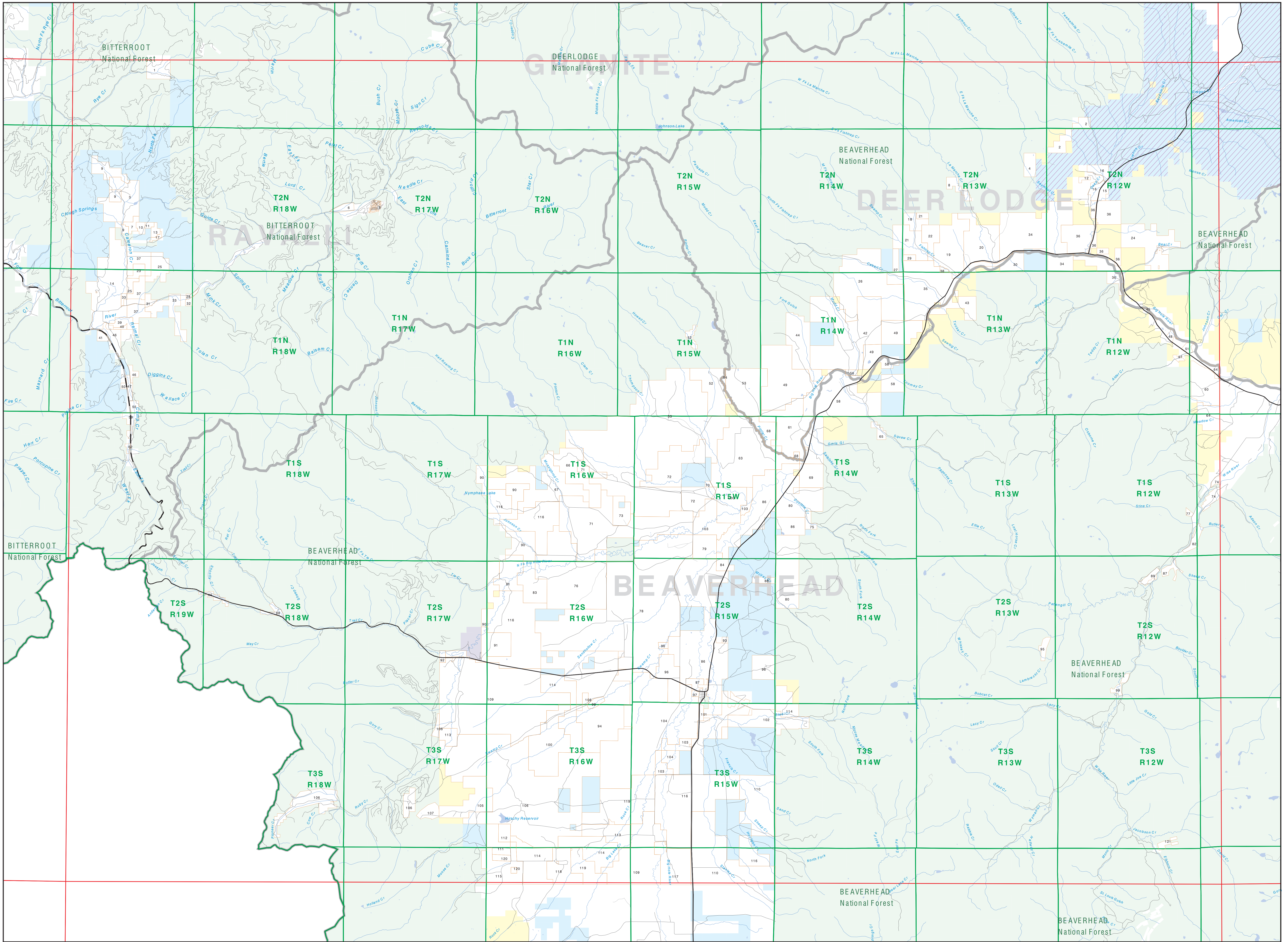


# Private Land Ownership Identification WISDOM - (45113b)

1	C B RANCH LLC	497
2	DAVIDSON INVESTMENTS L.P.	108
3	J M RANCHES	1454
4	ROY SCOTT OF AMERICA AT COURT	103
5	HILLE SPRINGER MONTANA, COVY	74
6	FRANCIS ROBERT S SHAWDON	159
7	SEA INVESTMENTS LLC	153
8	WHEELER DAVID E	276
9	J M MILLER RANCHES LLC	773
10	RAYES KENNETH O LARRY JORDAN	105
11	RAEDES KENNETH O LARRY GORDON	86
12	STREET JASON	107
13	WEDDER BRYAN E	107
14	SHILPAK RANCH LLC	2068
15	SHUTE BARBARA A CIRCLE 1514	154
16	SPOLAR JOHN	481
17	STREETS JASON	107
18	STREETS JASON	107
19	STREETS JASON	107
20	STREETS JASON	107
21	STREETS JASON	107
22	STREETS JASON	107
23	STREETS JASON	107
24	STREETS JASON	107
25	STREETS JASON	107
26	STREETS JASON	107
27	STREETS JASON	107
28	STREETS JASON	107
29	STREETS JASON	107
30	STREETS JASON	107
31	STREETS JASON	107
32	STREETS JASON	107
33	STREETS JASON	107
34	STREETS JASON	107
35	STREETS JASON	107
36	STREETS JASON	107
37	STREETS JASON	107
38	STREETS JASON	107
39	STREETS JASON	107
40	STREETS JASON	107
41	STREETS JASON	107
42	STREETS JASON	107
43	STREETS JASON	107
44	STREETS JASON	107
45	STREETS JASON	107
46	STREETS JASON	107
47	STREETS JASON	107
48	STREETS JASON	107
49	STREETS JASON	107
50	STREETS JASON	107
51	STREETS JASON	107
52	STREETS JASON	107
53	STREETS JASON	107
54	STREETS JASON	107
55	STREETS JASON	107
56	STREETS JASON	107
57	STREETS JASON	107
58	STREETS JASON	107
59	STREETS JASON	107
60	STREETS JASON	107
61	STREETS JASON	107
62	STREETS JASON	107
63	STREETS JASON	107
64	STREETS JASON	107
65	STREETS JASON	107
66	STREETS JASON	107
67	STREETS JASON	107
68	STREETS JASON	107
69	STREETS JASON	107
70	STREETS JASON	107
71	STREETS JASON	107
72	STREETS JASON	107
73	STREETS JASON	107
74	STREETS JASON	107
75	STREETS JASON	107
76	STREETS JASON	107
77	STREETS JASON	107
78	STREETS JASON	107
79	STREETS JASON	107
80	STREETS JASON	107
81	STREETS JASON	107
82	STREETS JASON	107
83	STREETS JASON	107
84	STREETS JASON	107
85	STREETS JASON	107
86	STREETS JASON	107
87	STREETS JASON	107
88	STREETS JASON	107
89	STREETS JASON	107
90	STREETS JASON	107
91	STREETS JASON	107
92	STREETS JASON	107
93	STREETS JASON	107
94	STREETS JASON	107
95	STREETS JASON	107
96	STREETS JASON	107
97	STREETS JASON	107
98	STREETS JASON	107
99	STREETS JASON	107
100	STREETS JASON	107



**Legend**

- Private
- Forest Service
- Bureau of Land Management
- National Park Service
- Other Federal Land
- Fish and Wildlife Service
- State Lands
- Local Govt
- Native American
- MFWP - WMA
- Lake/Reservoir
- Road
- Primitive Road
- River
- Stream/Creek
- Intermittent Creek
- Township
- County Border
- Fish Wildlife & Parks Wildlife Management Area
- Interstate
- Secondary Highway
- Highway

**NOTES:**  
Not all legend items may appear on this map.  
Features shown on this map do not indicate public access to any lands.  
The land status data displayed on this map may not be complete and may contain errors in boundary locations and/or coding.  
**DISCLAIMERS:**  
The MT Natural Heritage Program, MT State Library, MT Dept of Administration, and MT Dept of Revenue make no representations or warranties whatsoever with respect to the accuracy or completeness of the data contained in these maps and assumes no responsibility for the suitability of these data for any particular purpose. These agencies will not be liable for any damages incurred as a result of errors displayed here. The ownership boundaries displayed on this map are not based on land survey data and are not a substitute for property surveys. This map displays public and private land ownership information derived from several sources and continues to be corrected and updated.

**SOURCES / ACKNOWLEDGEMENTS**  
This map was produced as a joint effort between the MT Dept of Fish, Wildlife, and Parks (FWP) and the Montana Natural Resource Information System (NRIS) of the MT State Library. In response to Montana Code Annotated §7-5-505, which directs the FWP to work cooperatively with all state and federal land management agencies... to develop accurate land ownership maps... in the State.  
The public land data is from the MT Natural Heritage Program land ownership data collection. Much of this data was originally digitized by the Bureau of Land Management (BLM) from 1:100,000 scale BLM Surface Management Status maps. Additional information, corrections and updates (especially for real lands and private lands) were added by the University of Montana, Wildlife Status Analysis Unit, during 1996-1998. Since 1998, the Montana Natural Heritage Program has made numerous updates and corrections (especially the water trust lands, Montana Fish, Wildlife & Parks areas, US Fish & Wildlife Service areas, and conservation easements). These data are based on data supplied by the various public agencies and land trusts, and have not been verified against the county or Montana Department of Revenue records.

The private land data was developed for the Montana Cadastral Database Project. These data are provided through a cooperative effort between the Montana Department of Administration (DOA), the Montana Department of Revenue (DOR), other state agencies, local governments, USFS/BLM and private enterprise. Lands depicted on this map represent single ownership of contiguous parcels that are at least 40 acres in size. The DOA maintains the GIS cadastral layer and the DOR maintains the private ownership information.  
The base scale for the public ownership data is 1:100,000, though many of the recent cadastral data digitized from 1:24,000 scale maps or survey data. Private ownership data is accurate to scales of 1:24,000 or smaller.  
Map produced August 2009 with ownership data current as of June 3, 2009.

**USGS 100,000 Scale Quadrangle Index**

81100	481100	481140	481180	481220	481260	481300	481340	481380	481420	481460	481500	481540
116A	481150	481190	481230	481270	481310	481350	481390	481430	481470	481510	481550	481590
120	471100	471140	471180	471220	471260	471300	471340	471380	471420	471460	471500	471540
421150	471160	471190	471220	471250	471280	471310	471340	471370	471400	471430	471460	471490
481160	481190	481220	481250	481280	481310	481340	481370	481400	481430	481460	481490	481520
481240	481270	481300	481330	481360	481390	481420	481450	481480	481510	481540	481570	481600
481140	481170	481200	481230	481260	481290	481320	481350	481380	481410	481440	481470	481500
481130	481160	481190	481220	481250	481280	481310	481340	481370	481400	481430	481460	481490