

Private Land Ownership Identification WIBAUX - (46104b)

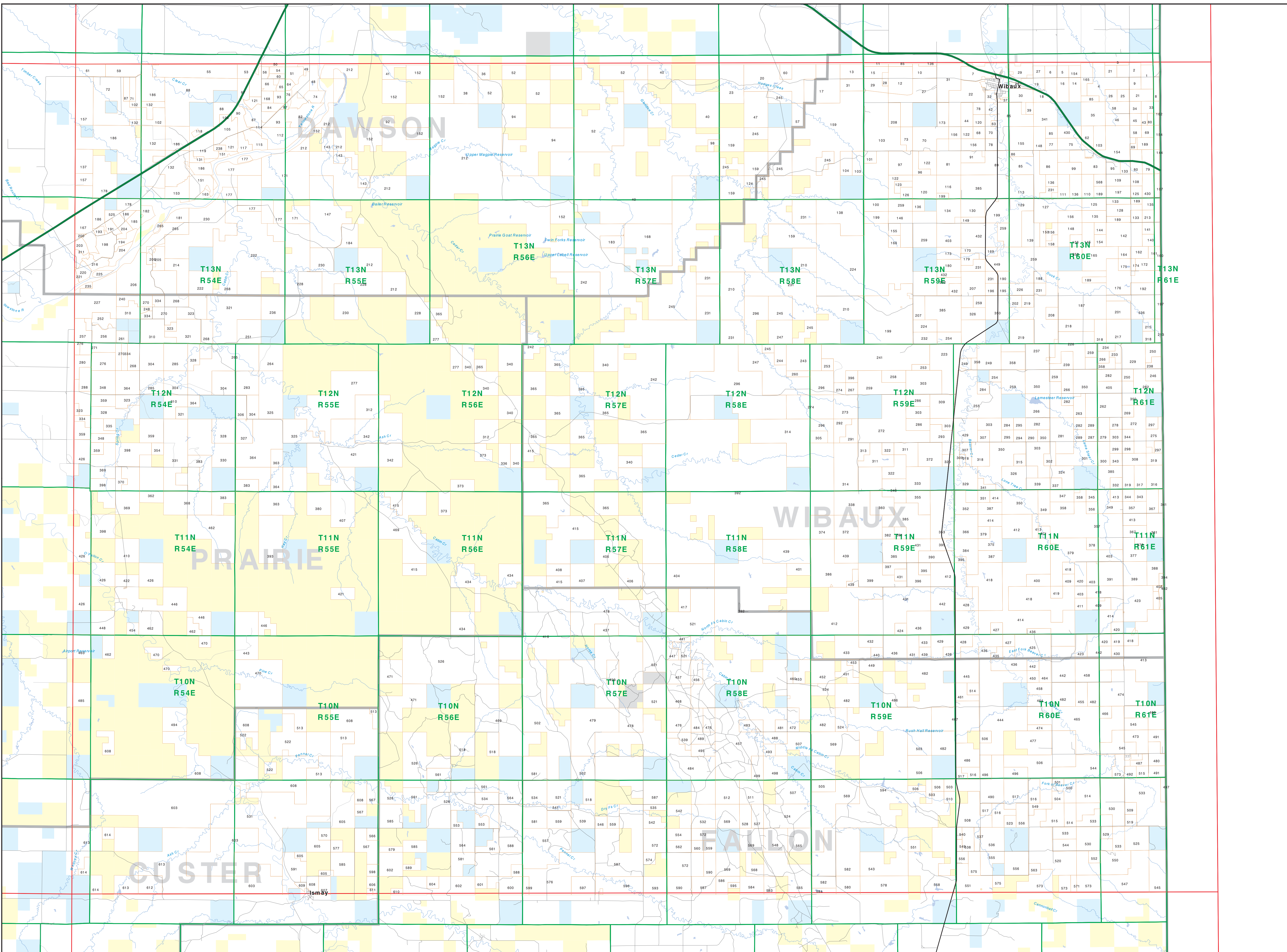


Table listing parcel numbers, owner names, and total acreages for various land parcels across the map area.

- Legend for land ownership types: Private, Forest Service, Bureau of Land Management, National Park Service, Other Federal Land, Fish and Wildlife Service, State Lands, Local Govt, Native American, MFWP - WMA, Lake/Reservoir, Interstate, Secondary Highway, Highway, Road, Primitive Road, River, Stream/Creek, Intermittent Creek, Township, County Border, Fish Wildlife & Parks Wildlife Management Area.

NOTES: Not all legend items may appear on this map. Features shown on this map do not constitute public access to any lands. The land status data displayed on this map may not be complete and may vary from boundary locations and/or coding. DDC/ANR/ES

SOURCES/ACKNOWLEDGEMENTS: This map was produced as a joint effort between the MT Dept of Fish, Wildlife, and Parks (FWP) and the Montana Natural Resource Information System (NRIS) of the MT State Library, in response to Executive Order 17-2008, when the Department of Administration (DOA) transferred the Montana Department of Revenue (DOR), other state agencies, local governments, USFS BLM and private enterprise. Land ownership data in this report represent single ownership of contiguous parcels that are at least 40 acres in size. The DOA maintains the GIS database and the DOR maintains the ownership information.

The private land data were developed for the Montana Citizens Database Project. These data are provided through a cooperative effort between the Montana Department of Administration (DOA), the Montana Department of Revenue (DOR), other state agencies, local governments, USFS BLM and private enterprise. Land ownership data in this report represent single ownership of contiguous parcels that are at least 40 acres in size. The DOA maintains the GIS database and the DOR maintains the ownership information.

USGS 100,000 Scale Quadrangle Index table showing coordinates and grid indices for the map area.