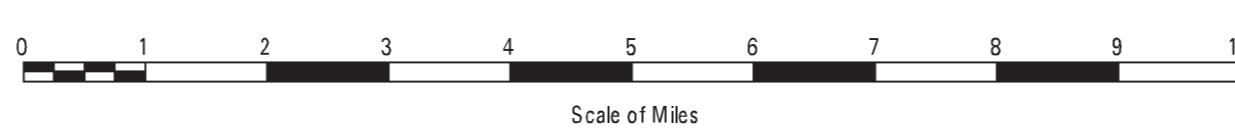
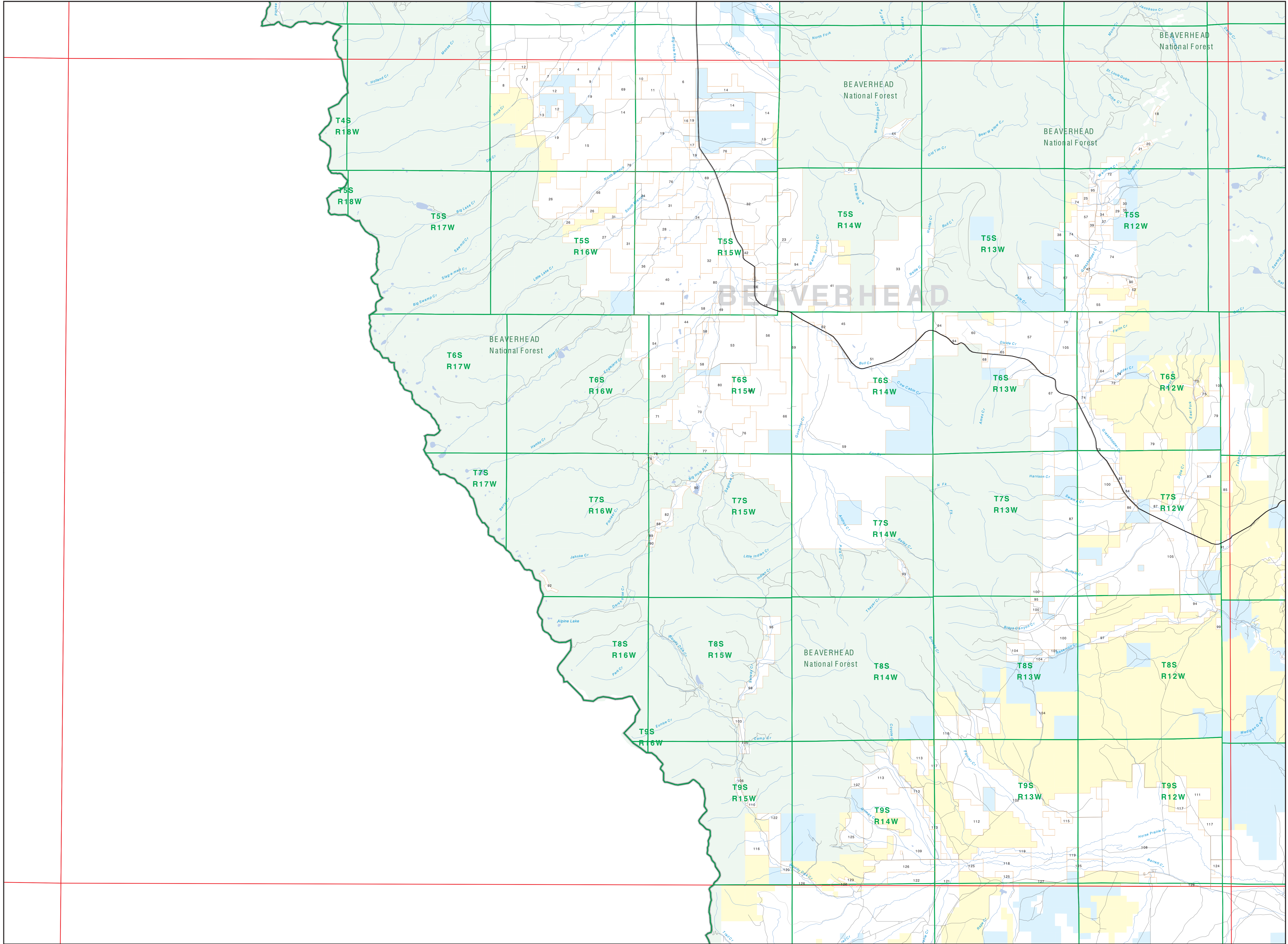


Private Land Ownership Identification SALMON - (45113a)

1. SUNNYLOPE LAND CATTLE COMPA. 496
2. BIG HOLE GRADING ASSOCIATION 202
3. FOSTER COMPANY 429
4. FOSTER LAND CATTLE 209
5. MIDSON RIVER CATTLE COMPANY 383
6. WORTHY TRACT 2542
7. WEISS JAMES D. 183
8. WOODS JESSIE P. 391
9. FOSTER ROAD 328
10. HIRSCOFF RICHARD 184
11. HIRSCOFF LIVESTOCK INC JACK. 617
12. FOSTER ROAD 328
13. FOSTER ROAD 328
14. HIRSCOFF JACK LIVESTOCK INC. 8496
15. WALKER TRACT 1284
16. PETERSON RUSSELL E. PATRICIA 82
17. PETERSON RUSSELL E. 182
18. DAVIS FAMILY TRUST 42
19. FORTY FIVE RANCH INC. 3319
20. HAWEL BURKE 48
21. COY FAMILY TRUST 88
22. SLATER JAMES C. 181
23. LARSON RANCH COMPANY 4086
24. HUSTED RANCHED 3751
25. TURNER RANCHO 1248
26. CORNELL RANCHO 1163
27. TURNER RANCHO 1248
28. JOHNSON BROTHERS INC. 1114
29. WEEVER CAROL 48
30. FACTOR VERA 48
31. JOHNSON RANCHO INC. 1398
32. ROCKY MOUNTAIN RANCHES INC. 3442
33. GOSDOLK LAND CATTLE LLC. 3212
34. BECKER JAMES J. DONANDA 80
35. JAYLWAY LAK 88
36. HURT WILLIAM RANCHO LLC. 1879
37. BECKER THOMAS L. 188
38. BECKER CHARLES L. 200
39. BECKER THOMAS L. 188
40. CITY ANGUS FARMS LIMITED PARTN. 3889
41. HIRSCOFF RANCHO 1248
42. HUSTED WILLIAM E. ETAL 88
43. HUSTED WILLIAM E. ETAL 88
44. MITCHELL THOMAS BEA WELLY 2088
45. HIRSCOFF THOMAS BEA WELLY 2088
46. STROTHMAN TRUST 1228
47. STROTHMAN TRUST 1228
48. HILLER GREGORY TODD 1250
49. HILLER THOMAS L. 188
50. SLY CLINT 94
51. HIRSCOFF THOMAS BEA WELLY 2088
52. HIRSCOFF THOMAS BEA WELLY 2088
53. WOODS JESSIE P. 391
54. WOODS JESSIE P. 391
55. WOODS JESSIE P. 391
56. JIMMIES LORNE M. 871
57. CIRCLE S LAND CATTLE LLC. 3879
58. CIRCLE S LAND CATTLE LLC. 3879
59. JIMMIES LORNE M. 871
60. HIRSCOFF THOMAS BEA WELLY 2088
61. HIRSCOFF THOMAS BEA WELLY 2088
62. HIRSCOFF THOMAS BEA WELLY 2088
63. WOODS JESSIE P. 391
64. WOODS JESSIE P. 391
65. TAT FAMILY TRUST 88
66. TAT FAMILY TRUST 88
67. TAT FAMILY TRUST 88
68. TAT FAMILY TRUST 88
69. TAT FAMILY TRUST 88
70. TAT FAMILY TRUST 88
71. TAT FAMILY TRUST 88
72. TAT FAMILY TRUST 88
73. TAT FAMILY TRUST 88
74. TAT FAMILY TRUST 88
75. TAT FAMILY TRUST 88
76. TAT FAMILY TRUST 88
77. TAT FAMILY TRUST 88
78. TAT FAMILY TRUST 88
79. TAT FAMILY TRUST 88
80. TAT FAMILY TRUST 88
81. TAT FAMILY TRUST 88
82. TAT FAMILY TRUST 88
83. TAT FAMILY TRUST 88
84. TAT FAMILY TRUST 88
85. TAT FAMILY TRUST 88
86. TAT FAMILY TRUST 88
87. TAT FAMILY TRUST 88
88. TAT FAMILY TRUST 88
89. TAT FAMILY TRUST 88
90. TAT FAMILY TRUST 88
91. TAT FAMILY TRUST 88
92. TAT FAMILY TRUST 88
93. TAT FAMILY TRUST 88
94. TAT FAMILY TRUST 88
95. TAT FAMILY TRUST 88
96. TAT FAMILY TRUST 88
97. TAT FAMILY TRUST 88
98. TAT FAMILY TRUST 88
99. TAT FAMILY TRUST 88
100. TAT FAMILY TRUST 88
101. TAT FAMILY TRUST 88
102. TAT FAMILY TRUST 88
103. TAT FAMILY TRUST 88
104. TAT FAMILY TRUST 88
105. TAT FAMILY TRUST 88
106. TAT FAMILY TRUST 88
107. TAT FAMILY TRUST 88
108. TAT FAMILY TRUST 88
109. TAT FAMILY TRUST 88
110. TAT FAMILY TRUST 88
111. TAT FAMILY TRUST 88
112. TAT FAMILY TRUST 88
113. TAT FAMILY TRUST 88
114. TAT FAMILY TRUST 88
115. TAT FAMILY TRUST 88
116. TAT FAMILY TRUST 88
117. TAT FAMILY TRUST 88
118. TAT FAMILY TRUST 88
119. TAT FAMILY TRUST 88
120. TAT FAMILY TRUST 88
121. TAT FAMILY TRUST 88
122. TAT FAMILY TRUST 88
123. TAT FAMILY TRUST 88
124. TAT FAMILY TRUST 88
125. TAT FAMILY TRUST 88
126. TAT FAMILY TRUST 88
127. TAT FAMILY TRUST 88
128. HANSEN LIVESTOCK COMPANY 47



SOURCES / ACKNOWLEDGEMENTS

This map was produced as a joint effort between the MT Dept. of Fish, Wildlife, and Parks (FWP) and the Montana Natural Resource Information System (NRIS) of the MT State Library. In response to Montana Code Annotated 67-3-208, which directs the FWP to "work cooperatively with all state and federal land management agencies... to develop accurate land ownership maps... in the State".

The public land data is from the MT Natural Heritage Program land stewardship data collection. Much of the data was originally digitized by the Bureau of Land Management (BLM) from 1:100,000 scale BLM Surface Management State Maps. Additional information, corrections and updates (especially for small lands and private lands) were added by the University of Montana, Wildlife Status Analysis Unit, during 1996-1998. Since 1998, the Montana Natural Heritage Program has made numerous updates and corrections (especially for state trust lands, Montana Fish, Wildlife & Parks areas, US Fish & Wildlife Service areas, and conservation easements). These data are based on data supplied by the various public agencies and land trusts, and have not been verified against county or Montana Department of Revenue records.

The private land data were developed for the Montana Cadastral Database Project. These data are provided through a cooperative effort between the Montana Department of Administration (MDA), the Montana Department of Revenue (DOR), other state agencies, local governments, USGS BLM, and private enterprises. Lands depicted on this map represent single ownership of contiguous parcels that are at least 40 acres in size. The DOR maintains the OIG substrate layer and the DOR maintains the private ownership information.

The base scale for the public ownership data is 1:100,000, though many of the recent data incorporate data digitized from 1:24,000 scale maps or survey data. Private ownership data is accurate to scales of 1:24,000 or smaller.

Map produced August 2009 with ownership data current as of June 3, 2009.

USGS 100,000 Scale Quadrangle Index

| | | | | | | | | | | |
|-------|-------|-------|-------|-------|-------|-------|-------|-------|-------|-------|
| 81100 | 81101 | 81102 | 81103 | 81104 | 81105 | 81106 | 81107 | 81108 | 81109 | 81110 |
| 1100 | 1101 | 1102 | 1103 | 1104 | 1105 | 1106 | 1107 | 1108 | 1109 | 1110 |
| 47100 | 47101 | 47102 | 47103 | 47104 | 47105 | 47106 | 47107 | 47108 | 47109 | 47110 |
| 48100 | 48101 | 48102 | 48103 | 48104 | 48105 | 48106 | 48107 | 48108 | 48109 | 48110 |
| 49100 | 49101 | 49102 | 49103 | 49104 | 49105 | 49106 | 49107 | 49108 | 49109 | 49110 |
| 50100 | 50101 | 50102 | 50103 | 50104 | 50105 | 50106 | 50107 | 50108 | 50109 | 50110 |
| 51100 | 51101 | 51102 | 51103 | 51104 | 51105 | 51106 | 51107 | 51108 | 51109 | 51110 |
| 52100 | 52101 | 52102 | 52103 | 52104 | 52105 | 52106 | 52107 | 52108 | 52109 | 52110 |
| 53100 | 53101 | 53102 | 53103 | 53104 | 53105 | 53106 | 53107 | 53108 | 53109 | 53110 |
| 54100 | 54101 | 54102 | 54103 | 54104 | 54105 | 54106 | 54107 | 54108 | 54109 | 54110 |
| 55100 | 55101 | 55102 | 55103 | 55104 | 55105 | 55106 | 55107 | 55108 | 55109 | 55110 |
| 56100 | 56101 | 56102 | 56103 | 56104 | 56105 | 56106 | 56107 | 56108 | 56109 | 56110 |
| 57100 | 57101 | 57102 | 57103 | 57104 | 57105 | 57106 | 57107 | 57108 | 57109 | 57110 |
| 58100 | 58101 | 58102 | 58103 | 58104 | 58105 | 58106 | 58107 | 58108 | 58109 | 58110 |
| 59100 | 59101 | 59102 | 59103 | 59104 | 59105 | 59106 | 59107 | 59108 | 59109 | 59110 |
| 60100 | 60101 | 60102 | 60103 | 60104 | 60105 | 60106 | 60107 | 60108 | 60109 | 60110 |

- Private
- State Lands
- Road
- Forest Service
- Local Govt
- Primitive Road
- Bureau of Land Management
- Native American
- River
- National Park Service
- MFWP - WMA
- Stream/Creek
- Other Federal Land
- Lake/Reservoir
- Intermittent Creek
- Fish and Wildlife Service
- Interstate
- County Border
- Fish Wildlife & Parks Wildlife Management Area
- Secondary Highway
- Highway

NOTES:
Not all legend items may appear on this map.
Features shown on this map do not imply public access to any lands.
The land status data displayed on this map may not be complete and may contain errors in boundary locations and/or coding.

DISCLAIMERS:
The MT Natural Heritage Program, MT State Library, MT Dept. of Administration and MT Dept. of Revenue make no representations or warranties whatsoever with respect to the accuracy or completeness of the data compiled in these maps and assumes no responsibility for the suitability of these data for a particular purpose. These agencies will not be liable for any damages incurred as a result of errors displayed here. The ownership boundaries displayed on this map are not based on land survey data and are not a substitute for property surveys. This map displays public and private land ownership information derived from several sources and continues to be corrected and updated.