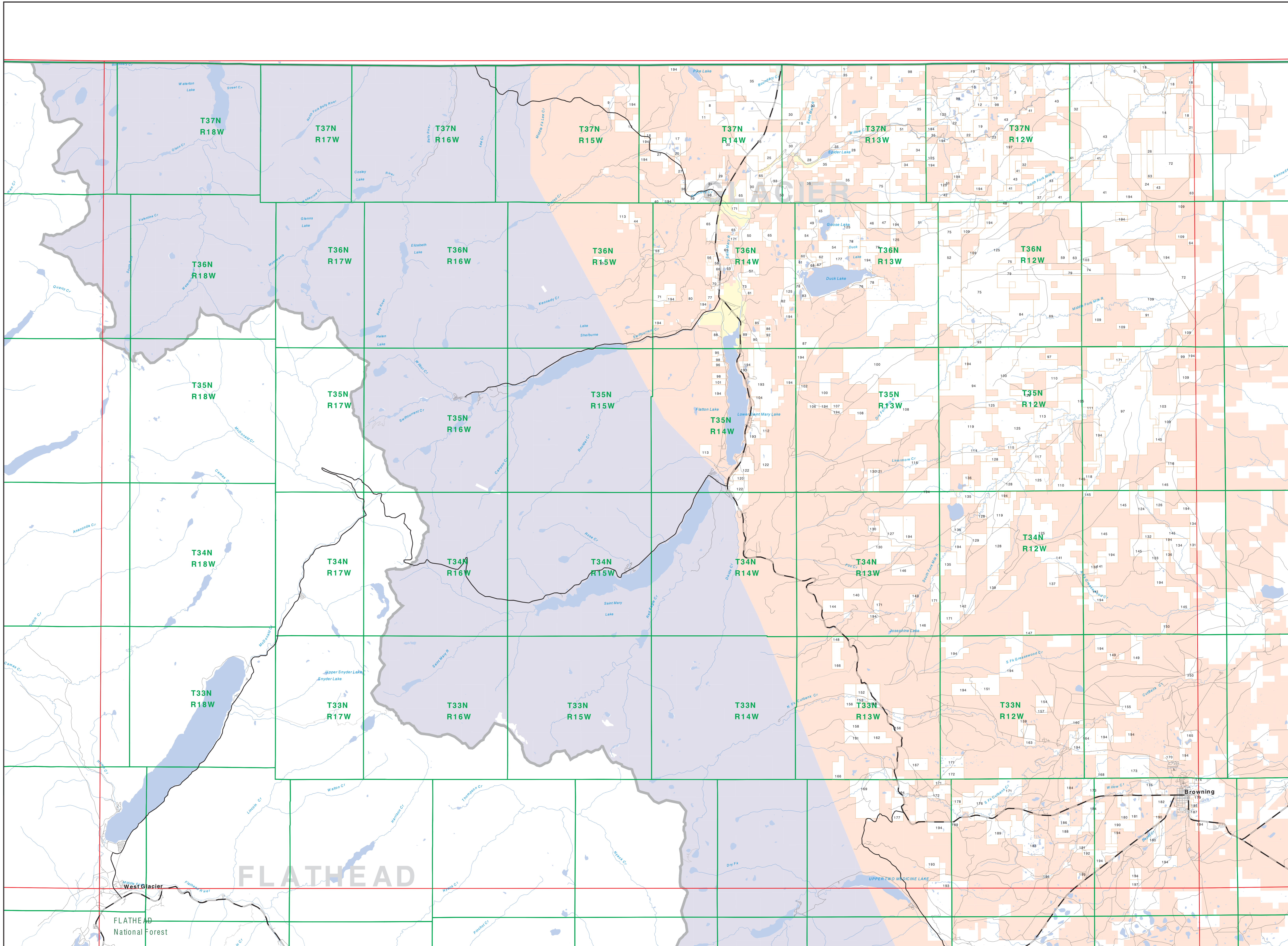


Private Land Ownership Identification

SAINT MARY - (48113b)



1	CAMPBELL JAMES W. 190	1.00
2	WATSON JOHN 190	1.00
3	WATSON JOHN 190	1.00
4	WATSON JOHN 190	1.00
5	WATSON JOHN 190	1.00
6	WATSON JOHN 190	1.00
7	WATSON JOHN 190	1.00
8	WATSON JOHN 190	1.00
9	WATSON JOHN 190	1.00
10	WATSON JOHN 190	1.00
11	WATSON JOHN 190	1.00
12	WATSON JOHN 190	1.00
13	WATSON JOHN 190	1.00
14	WATSON JOHN 190	1.00
15	WATSON JOHN 190	1.00
16	WATSON JOHN 190	1.00
17	WATSON JOHN 190	1.00
18	WATSON JOHN 190	1.00
19	WATSON JOHN 190	1.00
20	WATSON JOHN 190	1.00
21	WATSON JOHN 190	1.00
22	WATSON JOHN 190	1.00
23	WATSON JOHN 190	1.00
24	WATSON JOHN 190	1.00
25	WATSON JOHN 190	1.00
26	WATSON JOHN 190	1.00
27	WATSON JOHN 190	1.00
28	WATSON JOHN 190	1.00
29	WATSON JOHN 190	1.00
30	WATSON JOHN 190	1.00
31	WATSON JOHN 190	1.00
32	WATSON JOHN 190	1.00
33	WATSON JOHN 190	1.00
34	WATSON JOHN 190	1.00
35	WATSON JOHN 190	1.00
36	WATSON JOHN 190	1.00
37	WATSON JOHN 190	1.00
38	WATSON JOHN 190	1.00
39	WATSON JOHN 190	1.00
40	WATSON JOHN 190	1.00
41	WATSON JOHN 190	1.00
42	WATSON JOHN 190	1.00
43	WATSON JOHN 190	1.00
44	WATSON JOHN 190	1.00
45	WATSON JOHN 190	1.00
46	WATSON JOHN 190	1.00
47	WATSON JOHN 190	1.00
48	WATSON JOHN 190	1.00
49	WATSON JOHN 190	1.00
50	WATSON JOHN 190	1.00
51	WATSON JOHN 190	1.00
52	WATSON JOHN 190	1.00
53	WATSON JOHN 190	1.00
54	WATSON JOHN 190	1.00
55	WATSON JOHN 190	1.00
56	WATSON JOHN 190	1.00
57	WATSON JOHN 190	1.00
58	WATSON JOHN 190	1.00
59	WATSON JOHN 190	1.00
60	WATSON JOHN 190	1.00
61	WATSON JOHN 190	1.00
62	WATSON JOHN 190	1.00
63	WATSON JOHN 190	1.00
64	WATSON JOHN 190	1.00
65	WATSON JOHN 190	1.00
66	WATSON JOHN 190	1.00
67	WATSON JOHN 190	1.00
68	WATSON JOHN 190	1.00
69	WATSON JOHN 190	1.00
70	WATSON JOHN 190	1.00
71	WATSON JOHN 190	1.00
72	WATSON JOHN 190	1.00
73	WATSON JOHN 190	1.00
74	WATSON JOHN 190	1.00
75	WATSON JOHN 190	1.00
76	WATSON JOHN 190	1.00
77	WATSON JOHN 190	1.00
78	WATSON JOHN 190	1.00
79	WATSON JOHN 190	1.00
80	WATSON JOHN 190	1.00
81	WATSON JOHN 190	1.00
82	WATSON JOHN 190	1.00
83	WATSON JOHN 190	1.00
84	WATSON JOHN 190	1.00
85	WATSON JOHN 190	1.00
86	WATSON JOHN 190	1.00
87	WATSON JOHN 190	1.00
88	WATSON JOHN 190	1.00
89	WATSON JOHN 190	1.00
90	WATSON JOHN 190	1.00
91	WATSON JOHN 190	1.00
92	WATSON JOHN 190	1.00
93	WATSON JOHN 190	1.00
94	WATSON JOHN 190	1.00
95	WATSON JOHN 190	1.00
96	WATSON JOHN 190	1.00
97	WATSON JOHN 190	1.00
98	WATSON JOHN 190	1.00
99	WATSON JOHN 190	1.00
100	WATSON JOHN 190	1.00

Legend

- Private
- Forest Service
- Bureau of Land Management
- National Park Service
- Other Federal Land
- Fish and Wildlife Service
- State Lands
- Local Govt
- Native American
- MFWP - WMA
- Lake/Reservoir
- Interstate
- Secondary Highway
- Highway
- Road
- Primitive Road
- River
- Stream/Creek
- Intermittent Creek
- Township
- County Border
- Fish Wildlife & Parks Wildlife Management Area

NOTES:
 Not all legend items may appear on this map.
 Features shown on this map do not imply public access to any lands.
 The land status data displayed on this map may not be complete and may contain errors in boundary locations and/or coding.
DISCLAIMER:
 The Montana Natural Heritage Program, Montana State Library, MT Dept. of Administration and MT Dept. of Revenue make no representations or warranties whatsoever with respect to the accuracy or completeness of the data contained in these maps and assume no responsibility for the suitability of these data for a particular purpose. These agencies will not be liable for any damages, including consequential, special, or punitive damages, arising from any reliance on the data contained in these maps. The Montana Natural Heritage Program has made numerous updates and corrections to the data used in this map. The data is based on the most current data available and is subject to change without notice. The data is based on the most current data available and is subject to change without notice. The data is based on the most current data available and is subject to change without notice.

SOURCES / ACKNOWLEDGEMENTS
 This map was produced as a joint effort between the MT Dept. of Fish, Wildlife, and Parks (FWP) and the Montana Natural Resource Information System (NRIS) of the MT State Library, in response to Montana Code Annotated 87-3-308, which directs the FWP to "work cooperatively with all state and federal land management agencies... to develop accurate land ownership maps... in the State".
 The public land data is from the MT Natural Heritage Program land ownership data collection. Much of this data was originally digitized by the Bureau of Land Management (BLM) from 1:100,000 scale BLM Surface Management (SRM) maps. Additional information, corrections and updates (especially for 90a lands and private lands) were added by the University of Montana, Wildlife Habitat Analysis Unit, during 1996-1998. Since 1998, the Montana Natural Heritage Program has made numerous updates and corrections (especially for state trust lands, Montana Fish, Wildlife & Parks areas, US Fish & Wildlife Service areas, and conservation easements). These edits are based on data supplied by the various public agencies and land buyers, and have not been verified against county or Montana Department of Revenue records.

The private land data were developed for the Montana Cultural Database Project. These data are provided through a cooperative effort between the Montana Department of Administration (DOA), the Montana Department of Revenue (DOR), other state agencies, local governments, USGS BLM and private enterprise.
 Lands depicted on this map represent single ownership of contiguous parcels that are at least 40 acres in size. The DOA maintains the GIS cadastral layer and the DOR maintains the private ownership information.
 The base scale for the public ownership data is 1:100,000, though many of the recent edits incorporate data digitized from 1:24,000 scale maps or survey data. Private ownership data is accurate to scales of 1:1,000 or smaller.
 Map produced August 2009 with ownership data current as of June 3, 2009.

