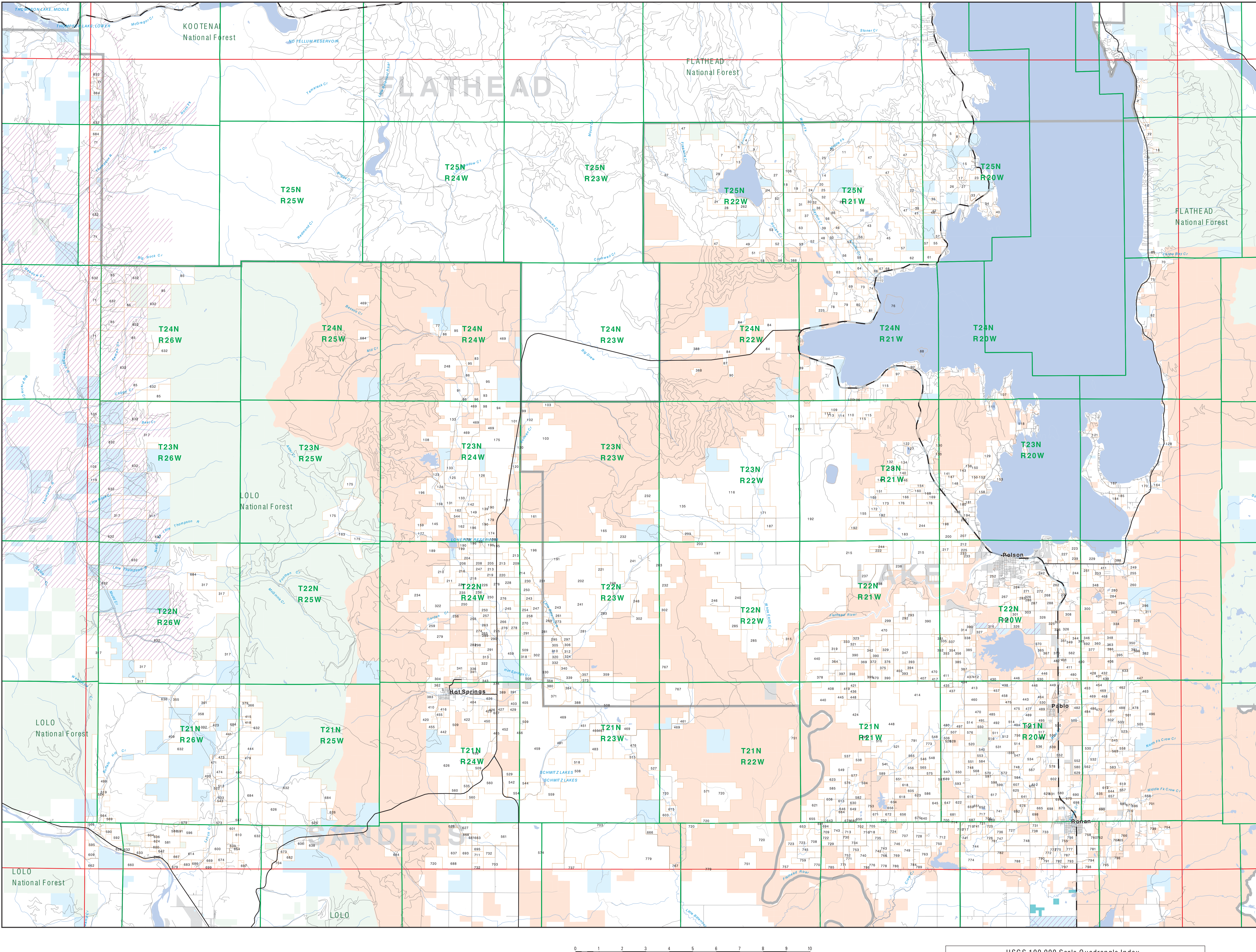


Private Land Ownership Identification POLSON - (47114b)



Legend for land ownership types: Private, State Lands, Forest Service, Bureau of Land Management, National Park Service, Fish and Wildlife Service, Road, Primitive Road, River, Stream/Creek, Intermittent Creek, Township, County Border, Fish Wildlife & Parks Wildlife Management Area, Interstate, Secondary Highway, Highway.

NOTES: Not depicted items may appear on this map. Features shown on this map do not constitute public access to any lands. The land status data displayed on this map is derived from the Montana Code Annotated and may not reflect current boundary locations and/or zoning.

SOURCES / ACKNOWLEDGMENTS: The private land data were developed for the Montana Cadastral Database Project. This map was produced as a joint effort between the MT Dept of Fish, Wildlife, and Parks and the Montana Natural Resource Information System (NRIS) of the MT State Library.

The base data for this public ownership data is 1:100,000 scale, though many of the recent data were acquired from 1:24,000 scale maps or survey data. Private ownership data is accurate to a scale of 1:40,000 or smaller.

USGS 100,000 Scale Quadrangle grid showing coordinates and values for the Polson area.