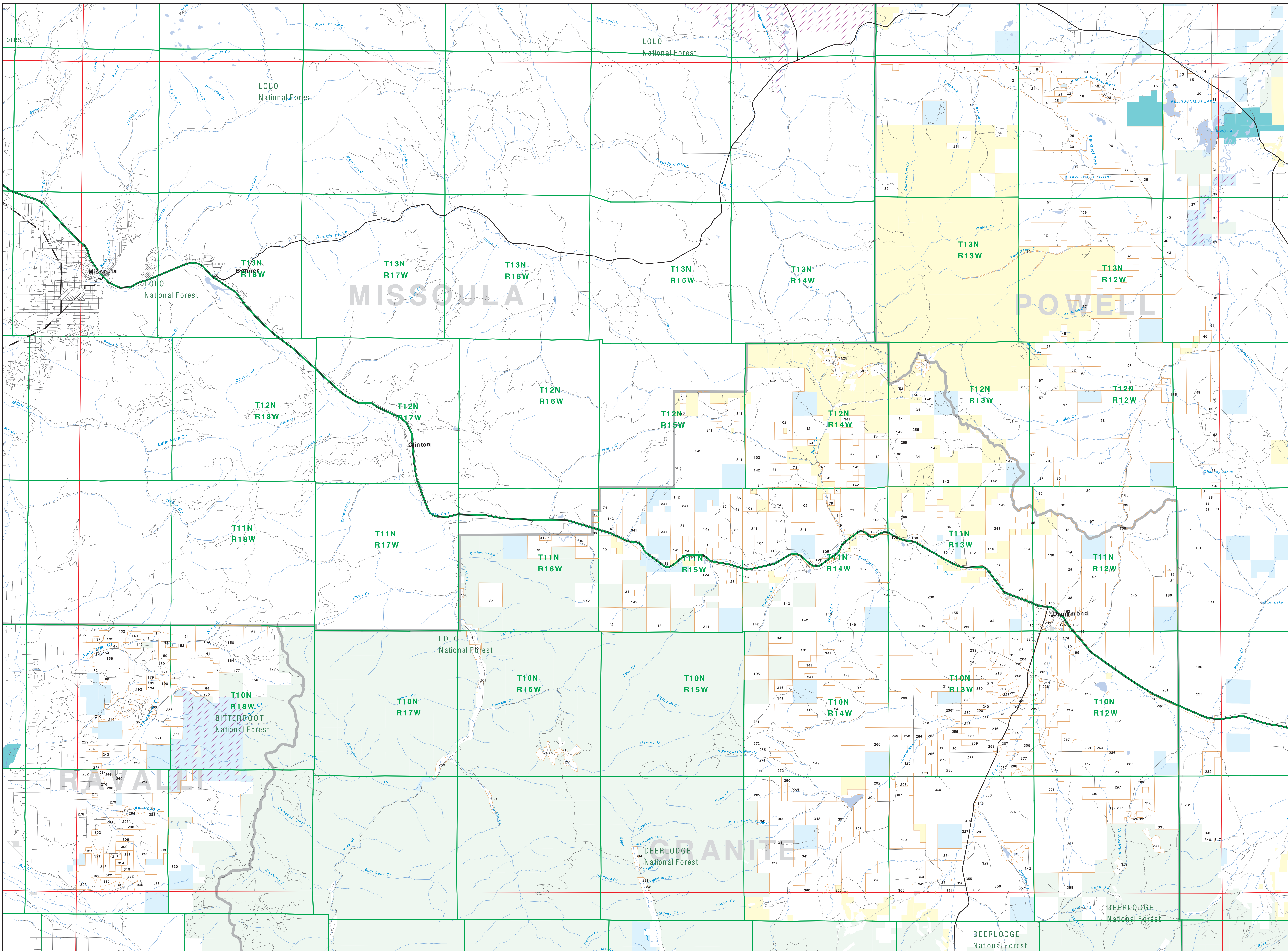


# Private Land Ownership Identification

## MISSOULA EAST - (46113b)



Parcel Num. Owner Name, Total Acres

1. DANIC, BOB 2.00
2. MONTGOMERY TRUSTEE, 400
3. LARRY R. BROWN, 10
4. BLACKFOOT VALLEY FARMERS, 378
5. LINDA F. BROWN, 10
6. PROFFER FAMILY RANCH, 16
7. LINDA F. BROWN, 10
8. JACOBSEN BART D TRUSTEE, 1919
9. KENTON ANN BROWN, 10
10. WILSON LILIAN F TRUSTEE, 200
11. BIRD ALLEN, 107
12. KESELA, ARLENE F PREVAIL, 113
13. BIRD ALLEN, 107
14. BIRD, 200
15. BIRD, 200
16. BIRD, 200
17. BIRD, 200
18. LETTIE LEE, 232
19. BIRD, 200
20. SMITH TERRANCE J TRUSTEE, 400
21. BLACKFOOT VALLEY FARMERS, 378
22. MONTGOMERY TRUSTEE, 400
23. MONTGOMERY TRUSTEE, 400
24. PROFFER JAY W RAY FAMILY LMTD, 452
25. BIRD, 200
26. BIRD, 200
27. BIRD, 200
28. BIRD, 200
29. BIRD, 200
30. BIRD, 200
31. BIRD, 200
32. BIRD, 200
33. BIRD, 200
34. BIRD, 200
35. BIRD, 200
36. BIRD, 200
37. BIRD, 200
38. BIRD, 200
39. BIRD, 200
40. BIRD, 200
41. BIRD, 200
42. BIRD, 200
43. BIRD, 200
44. BIRD, 200
45. BIRD, 200
46. BIRD, 200
47. BIRD, 200
48. BIRD, 200
49. BIRD, 200
50. BIRD, 200
51. BIRD, 200
52. BIRD, 200
53. BIRD, 200
54. BIRD, 200
55. BIRD, 200
56. BIRD, 200
57. BIRD, 200
58. BIRD, 200
59. BIRD, 200
60. BIRD, 200
61. BIRD, 200
62. BIRD, 200
63. BIRD, 200
64. BIRD, 200
65. BIRD, 200
66. BIRD, 200
67. BIRD, 200
68. BIRD, 200
69. BIRD, 200
70. BIRD, 200
71. BIRD, 200
72. BIRD, 200
73. BIRD, 200
74. BIRD, 200
75. BIRD, 200
76. BIRD, 200
77. BIRD, 200
78. BIRD, 200
79. BIRD, 200
80. BIRD, 200
81. BIRD, 200
82. BIRD, 200
83. BIRD, 200
84. BIRD, 200
85. BIRD, 200
86. BIRD, 200
87. BIRD, 200
88. BIRD, 200
89. BIRD, 200
90. BIRD, 200
91. BIRD, 200
92. BIRD, 200
93. BIRD, 200
94. BIRD, 200
95. BIRD, 200
96. BIRD, 200
97. BIRD, 200
98. BIRD, 200
99. BIRD, 200
100. BIRD, 200



USGS 100,000 Scale Quadrangle Index

|       |       |       |       |       |       |       |       |       |       |       |       |
|-------|-------|-------|-------|-------|-------|-------|-------|-------|-------|-------|-------|
| 8110  | 48110 | 48111 | 48112 | 48113 | 48114 | 48115 | 48116 | 48117 | 48118 | 48119 | 48120 |
| 1164  | 48115 | 48116 | 48117 | 48118 | 48119 | 48120 | 48121 | 48122 | 48123 | 48124 | 48125 |
| 10    | 47110 | 47111 | 47112 | 47113 | 47114 | 47115 | 47116 | 47117 | 47118 | 47119 | 47120 |
| 47111 | 47116 | 47117 | 47118 | 47119 | 47120 | 47121 | 47122 | 47123 | 47124 | 47125 | 47126 |
| 48110 | 48111 | 48112 | 48113 | 48114 | 48115 | 48116 | 48117 | 48118 | 48119 | 48120 | 48121 |
| 48114 | 48115 | 48116 | 48117 | 48118 | 48119 | 48120 | 48121 | 48122 | 48123 | 48124 | 48125 |
| 45110 | 45111 | 45112 | 45113 | 45114 | 45115 | 45116 | 45117 | 45118 | 45119 | 45120 | 45121 |
| 45114 | 45115 | 45116 | 45117 | 45118 | 45119 | 45120 | 45121 | 45122 | 45123 | 45124 | 45125 |
| 48110 | 48111 | 48112 | 48113 | 48114 | 48115 | 48116 | 48117 | 48118 | 48119 | 48120 | 48121 |

**NOTES:**  
Not all legend items may appear on this map.  
Features shown on this map do not imply public access to any lands.  
The land status data displayed on this map may not be complete and may contain errors in boundary locations and/or coding.  
**DISCLAIMER:**  
The Montana Heritage Program, MT State Library, MT Dept of Administration and MT Dept of Revenue make no representation or warranty whatsoever with respect to the accuracy or completeness of the data contained in these maps and assume no responsibility for the usability of these data for a particular purpose. These agencies will not be liable for any damages incurred as a result of errors displayed here. The ownership boundaries displayed on this map are not based on land survey data and are not suitable for property records. This map displays public and private land ownership information derived from several sources and continues to be corrected and updated.

**SOURCES / ACKNOWLEDGEMENTS**  
This map was produced as a joint effort between the MT Dept of Fish, Wildlife and Parks (FWP) and the Montana Natural Resource Information System (NRIS) of the MT State Library, in response to Montana Code Annotated § 7-2-206, which directs the FWP to "...work cooperatively with all state and federal land management agencies...to develop accurate land ownership maps...in the State".  
The public land data in this map was originally digitized by the Bureau of Land Management (BLM) from 1:50,000 scale BLM Surface Management Maps. Additional information, corrected and updated (especially for tribal lands) and private lands were added by the University of Montana, Wildlife Spatial Analysis Lab during 1998-1999. Since 1998, the Montana Natural Heritage Program has made numerous updates and corrections (especially for state trust lands, Montana Fish, Wildlife & Parks areas, US Fish & Wildlife Service areas, and conservation easements). These data are based on data supplied by the various agencies and land trusts, and have not been verified against county or Montana Department of Revenue records.

The private land data were developed for the Montana Cadastral Database Project. These data are provided through a cooperative effort between the Montana Department of Administration (DOA), the Montana Department of Revenue (DOR), other state agencies, local governments, USFWS and private enterprises. Land parcels are shown in this map regardless of whether they are currently owned by the state or are in the public domain. The DOA maintains the GIS cadastral layer and the DOR maintains the private ownership information.  
The base scale for the public ownership data is 1:100,000. Through many of the recent maps incorporate data digitized from 1:24,000 scale maps or survey data. The private ownership data is accurate to a scale of 1:24,000 or smaller.  
Map produced August 2009 with ownership data current as of June 3, 2009.