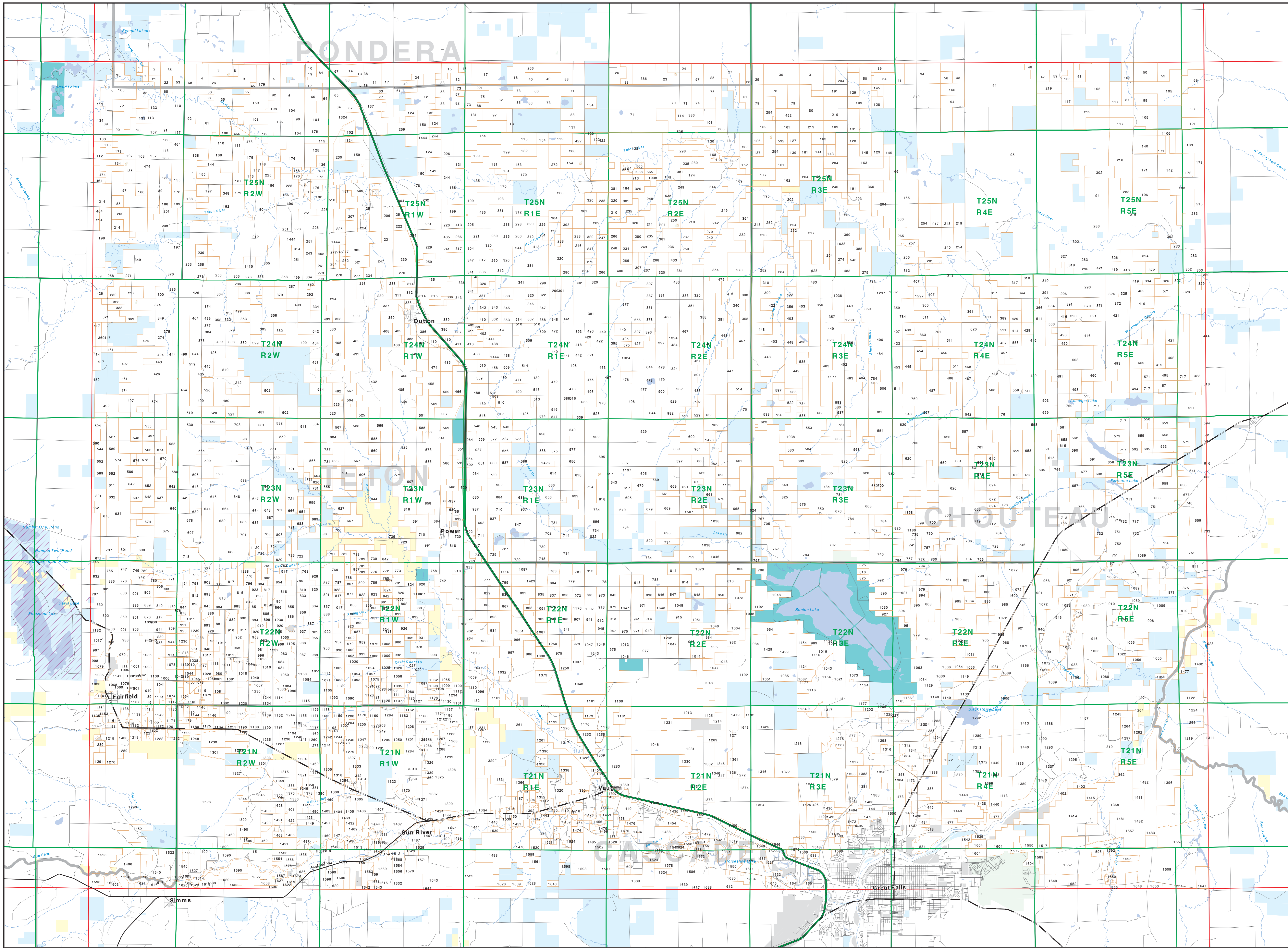


Private Land Ownership Identification GREAT FALLS NORTH - (47111b)



- State Lands
Private Land
Forest Service
Bureau of Land Management
National Park Service
Other Federal Land
Fish and Wildlife Service
Road
Primitive Road
River
Stream/Creek
Intermittent Creek
Township
County Border
Lake/Reservoir
Highway

NOTES
This map is intended to be used as a reference only. It is not a legal document. The information on this map is derived from the Montana Department of Fish, Wildlife & Parks and the Montana Natural Resource Information System (NARIS). The information on this map is derived from the Montana Department of Fish, Wildlife & Parks and the Montana Natural Resource Information System (NARIS). The information on this map is derived from the Montana Department of Fish, Wildlife & Parks and the Montana Natural Resource Information System (NARIS).

SOURCES/ACKNOWLEDGMENTS
The map was produced as a joint effort between the MT Dept. of Fish, Wildlife & Parks and the Montana Natural Resource Information System (NARIS). The information on this map is derived from the Montana Department of Fish, Wildlife & Parks and the Montana Natural Resource Information System (NARIS). The information on this map is derived from the Montana Department of Fish, Wildlife & Parks and the Montana Natural Resource Information System (NARIS).

USGS 100,000 Scale Quadrangle Index table with columns for Easting and Northing coordinates.

Main table of land ownership data with columns for Township, Range, Section, and Owner Name.