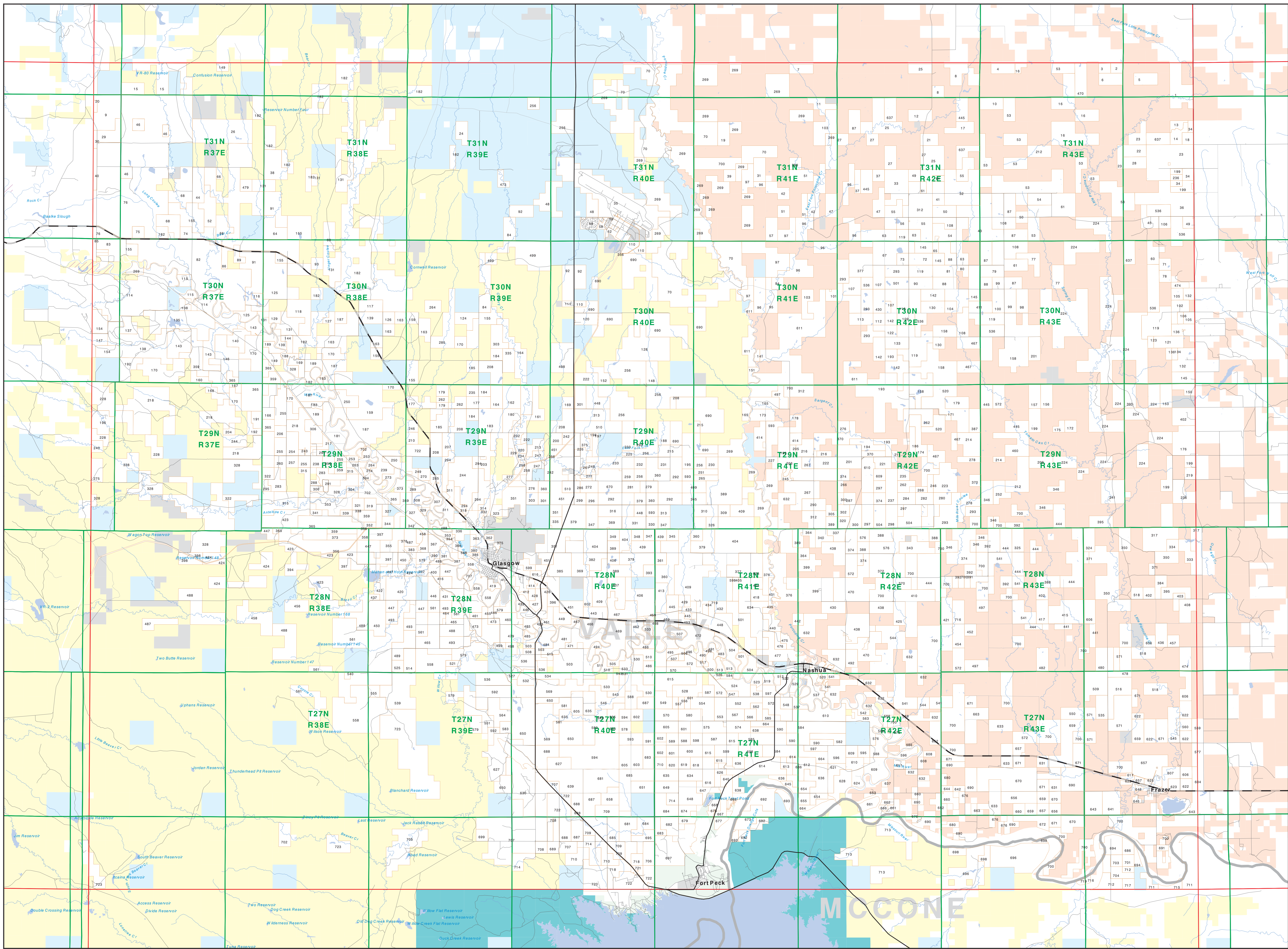


Private Land Ownership Identification

GLASGOW - (48106a)



Legend

- Private
- State Lands
- Bureau of Land Management
- National Park Service
- Other Federal Land
- Fish and Wildlife Service
- Road
- Primitive Road
- River
- Stream/Creek
- Intermittent Creek
- Township
- MFWP - WMA
- Lake/Reservoir
- County Border
- Fish Wildlife & Parks Wildlife Management Area
- Secondary Highway
- Highway

NOTES

Not all legend items may appear on this map. Features shown on this map do not constitute a warranty of accuracy or completeness. The land status data displayed on this map may not be complete and may vary from actual conditions on the ground.

The Montana Department of Fish, Wildlife & Parks (MFWP) is a cooperative effort between the Montana Department of Natural Resources and Conservation (DNRC) and the Montana Department of Transportation (MDT). The MFWP is a joint venture of the DNRC and MDT. The MFWP is a joint venture of the DNRC and MDT. The MFWP is a joint venture of the DNRC and MDT.

SOURCES/ACKNOWLEDGEMENTS

This map was produced as a joint effort between the Montana Department of Fish, Wildlife & Parks (MFWP) and the Montana Natural Resource Information System (NRIS) of the Montana Department of Natural Resources and Conservation (DNRC). The MFWP is a joint venture of the DNRC and MDT. The MFWP is a joint venture of the DNRC and MDT. The MFWP is a joint venture of the DNRC and MDT.

Scale of Miles: 0 1 2 3 4 5 6 7 8 9 10

USGS 100,000 Scale Quadrangle Index

| | | | | | | | | | | | | |
|-------|-------|-------|-------|-------|-------|-------|-------|-------|-------|-------|-------|-------|
| 81118 | 81119 | 81120 | 81121 | 81122 | 81123 | 81124 | 81125 | 81126 | 81127 | 81128 | 81129 | 81130 |
| 81131 | 81132 | 81133 | 81134 | 81135 | 81136 | 81137 | 81138 | 81139 | 81140 | 81141 | 81142 | 81143 |
| 81144 | 81145 | 81146 | 81147 | 81148 | 81149 | 81150 | 81151 | 81152 | 81153 | 81154 | 81155 | 81156 |