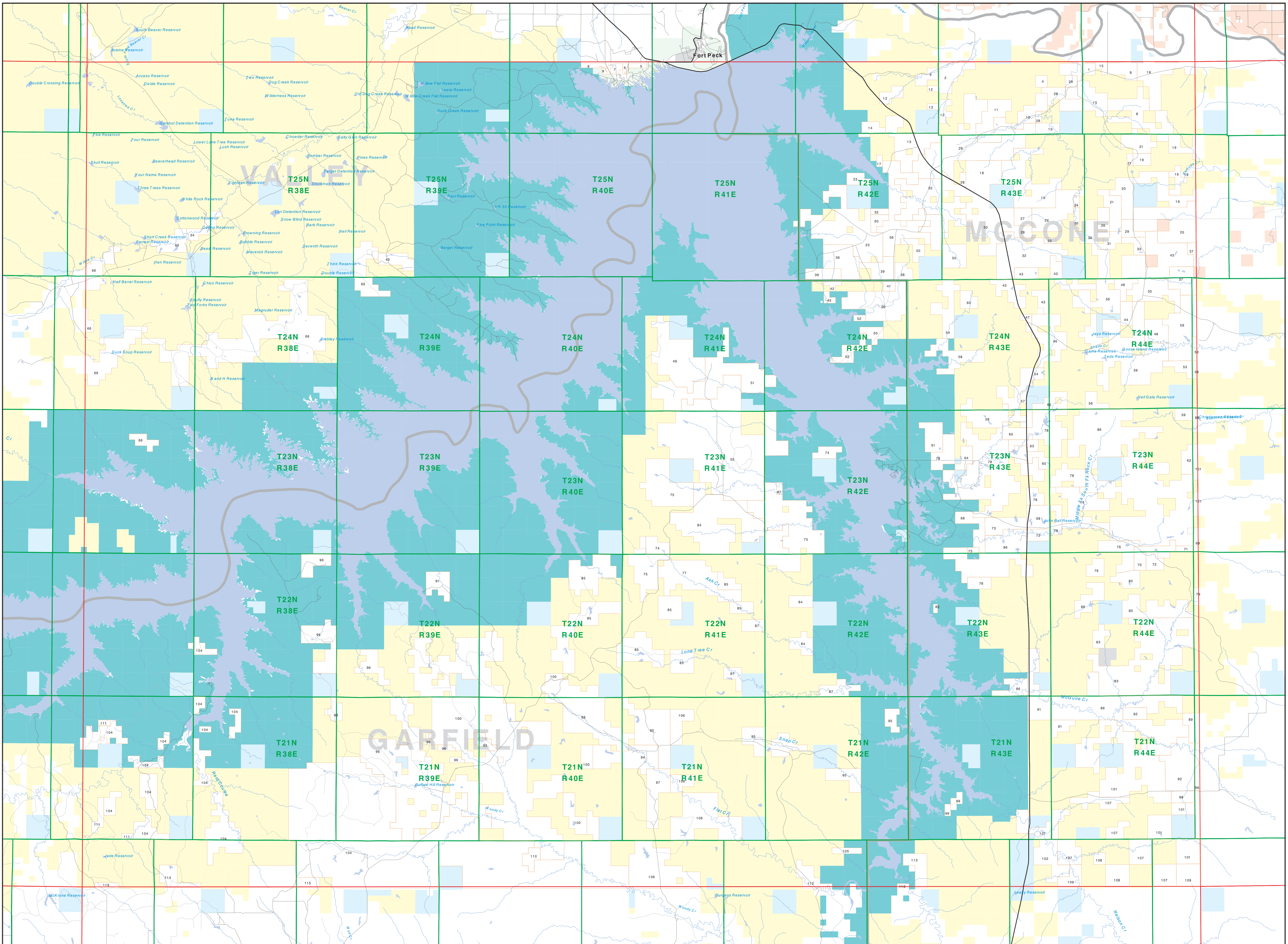


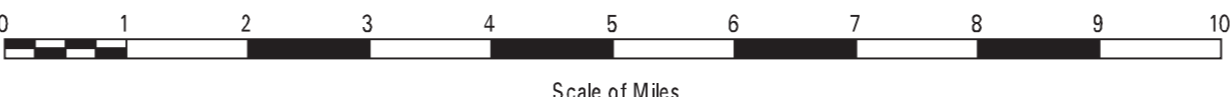
# Private Land Ownership Identification

## FORT PECK LAKE EAST - (47106b)



- Private
- Forest Service
- Bureau of Land Management
- National Park Service
- Other Federal Land
- Fish and Wildlife Service
- State Lands
- Local Govt
- Native American
- MFWP - WMA
- Lake/Reservoir
- Interstate
- Secondary Highway
- Highway
- Road
- Primitive Road
- River
- Stream/Creek
- Intermittent Creek
- Township
- County Border
- Fish Wildlife & Parks Wildlife Management Area

**NOTES:**  
 Not all legend items may appear on this map.  
 Features shown on this map do not imply public access to any lands.  
 The land status data displayed on this map may not be complete and may contain errors in boundary locations and/or coding.  
 DISCLAIMER:  
 The MT Natural Heritage Program, MT State Library, MT Dept of Administration and MT Dept of Revenue make no representations or warranties whatsoever with respect to the accuracy or completeness of the data contained in these maps and assume no responsibility for the suitability of these data for any particular purpose. These agencies will not be liable for any damages incurred as a result of errors displayed here. The ownership boundaries displayed on this map are not based on land survey data and are not a substitute for property surveys.  
 This map displays public and private land ownership information derived from several sources and continues to be corrected and updated.



**SOURCES / ACKNOWLEDGEMENTS**  
 This map was produced as a joint effort between the MT Dept. of Fish, Wildlife and Parks (FWP) and the Montana Natural Resource Information System (NRIS) of the MT State Library, in response to Montana Code Annotated 87-3-308, which directs the FWP to... with cooperation with all state and federal land management agencies... to develop accurate land ownership maps... in the State.  
 The public land data is from the MT Natural Heritage Program land stewardship data collection. Much of this data was originally digitized by the Bureau of Land Management (BLM) from 1:50,000 scale BLM Surface Management Status maps. Additional information, corrections and updates (especially for BLM lands and private lands) were added by the University of Montana, Wildlife Spatial Analysis Unit, during 1996-1998. Since 1998, the Montana Natural Heritage Program has made numerous updates and corrections especially for state trust lands, Montana Fish, Wildlife & Parks areas, US Fish & Wildlife Service areas, and conservation easements. These data are based on data supplied by the various public agencies and land trusts, and have not been verified against county or Montana Department of Revenue records.

USGS 100,000 Scale Quadrangle Index

8100	8110	8120	8130	8140	8150	8160	8170	8180	8190	8200	8210	8220
8230	8240	8250	8260	8270	8280	8290	8300	8310	8320	8330	8340	8350
8360	8370	8380	8390	8400	8410	8420	8430	8440	8450	8460	8470	8480
8490	8500	8510	8520	8530	8540	8550	8560	8570	8580	8590	8600	8610
8620	8630	8640	8650	8660	8670	8680	8690	8700	8710	8720	8730	8740
8750	8760	8770	8780	8790	8800	8810	8820	8830	8840	8850	8860	8870
8880	8890	8900	8910	8920	8930	8940	8950	8960	8970	8980	8990	9000

1: ENGINEER JOHN A. STUBBS, 194  
 2: NICKEL JACK W. TRUST, 318  
 3: NICKEL JACK W. TRUST, 318  
 4: DOORBEER JAMES R. UNKELL, 89  
 5: DOORBEER JAMES R. UNKELL, 89  
 6: NICKEL JACK W. TRUST, 318  
 7: NICKEL JACK W. TRUST, 318  
 8: NICKEL JACK W. TRUST, 318  
 9: FEUER JAMES R. JANNEY, 159  
 10: NICKEL JACK W. TRUST, 318  
 11: NICKEL JACK W. TRUST, 318  
 12: NICKEL JACK W. TRUST, 318  
 13: NICKEL JACK W. TRUST, 318  
 14: NICKEL JACK W. TRUST, 318  
 15: NICKEL JACK W. TRUST, 318  
 16: NICKEL JACK W. TRUST, 318  
 17: NICKEL JACK W. TRUST, 318  
 18: NICKEL JACK W. TRUST, 318  
 19: NICKEL JACK W. TRUST, 318  
 20: NICKEL JACK W. TRUST, 318  
 21: NICKEL JACK W. TRUST, 318  
 22: NICKEL JACK W. TRUST, 318  
 23: NICKEL JACK W. TRUST, 318  
 24: NICKEL JACK W. TRUST, 318  
 25: NICKEL JACK W. TRUST, 318  
 26: NICKEL JACK W. TRUST, 318  
 27: NICKEL JACK W. TRUST, 318  
 28: NICKEL JACK W. TRUST, 318  
 29: NICKEL JACK W. TRUST, 318  
 30: NICKEL JACK W. TRUST, 318  
 31: NICKEL JACK W. TRUST, 318  
 32: NICKEL JACK W. TRUST, 318  
 33: NICKEL JACK W. TRUST, 318  
 34: NICKEL JACK W. TRUST, 318  
 35: NICKEL JACK W. TRUST, 318  
 36: NICKEL JACK W. TRUST, 318  
 37: NICKEL JACK W. TRUST, 318  
 38: NICKEL JACK W. TRUST, 318  
 39: NICKEL JACK W. TRUST, 318  
 40: NICKEL JACK W. TRUST, 318  
 41: NICKEL JACK W. TRUST, 318  
 42: NICKEL JACK W. TRUST, 318  
 43: NICKEL JACK W. TRUST, 318  
 44: NICKEL JACK W. TRUST, 318  
 45: NICKEL JACK W. TRUST, 318  
 46: NICKEL JACK W. TRUST, 318  
 47: NICKEL JACK W. TRUST, 318  
 48: NICKEL JACK W. TRUST, 318  
 49: NICKEL JACK W. TRUST, 318  
 50: NICKEL JACK W. TRUST, 318  
 51: NICKEL JACK W. TRUST, 318  
 52: NICKEL JACK W. TRUST, 318  
 53: NICKEL JACK W. TRUST, 318  
 54: NICKEL JACK W. TRUST, 318  
 55: NICKEL JACK W. TRUST, 318  
 56: NICKEL JACK W. TRUST, 318  
 57: NICKEL JACK W. TRUST, 318  
 58: NICKEL JACK W. TRUST, 318  
 59: NICKEL JACK W. TRUST, 318  
 60: NICKEL JACK W. TRUST, 318  
 61: NICKEL JACK W. TRUST, 318  
 62: NICKEL JACK W. TRUST, 318  
 63: NICKEL JACK W. TRUST, 318  
 64: NICKEL JACK W. TRUST, 318  
 65: NICKEL JACK W. TRUST, 318  
 66: NICKEL JACK W. TRUST, 318  
 67: NICKEL JACK W. TRUST, 318  
 68: NICKEL JACK W. TRUST, 318  
 69: NICKEL JACK W. TRUST, 318  
 70: NICKEL JACK W. TRUST, 318  
 71: NICKEL JACK W. TRUST, 318  
 72: NICKEL JACK W. TRUST, 318  
 73: NICKEL JACK W. TRUST, 318  
 74: NICKEL JACK W. TRUST, 318  
 75: NICKEL JACK W. TRUST, 318  
 76: NICKEL JACK W. TRUST, 318  
 77: NICKEL JACK W. TRUST, 318  
 78: NICKEL JACK W. TRUST, 318  
 79: NICKEL JACK W. TRUST, 318  
 80: NICKEL JACK W. TRUST, 318  
 81: NICKEL JACK W. TRUST, 318  
 82: NICKEL JACK W. TRUST, 318  
 83: NICKEL JACK W. TRUST, 318  
 84: NICKEL JACK W. TRUST, 318  
 85: NICKEL JACK W. TRUST, 318  
 86: NICKEL JACK W. TRUST, 318  
 87: NICKEL JACK W. TRUST, 318  
 88: NICKEL JACK W. TRUST, 318  
 89: NICKEL JACK W. TRUST, 318  
 90: NICKEL JACK W. TRUST, 318  
 91: NICKEL JACK W. TRUST, 318  
 92: NICKEL JACK W. TRUST, 318  
 93: NICKEL JACK W. TRUST, 318  
 94: NICKEL JACK W. TRUST, 318  
 95: NICKEL JACK W. TRUST, 318  
 96: NICKEL JACK W. TRUST, 318  
 97: NICKEL JACK W. TRUST, 318  
 98: NICKEL JACK W. TRUST, 318  
 99: NICKEL JACK W. TRUST, 318  
 100: NICKEL JACK W. TRUST, 318