

Private Land Ownership Identification FORT BENTON - (47110b)

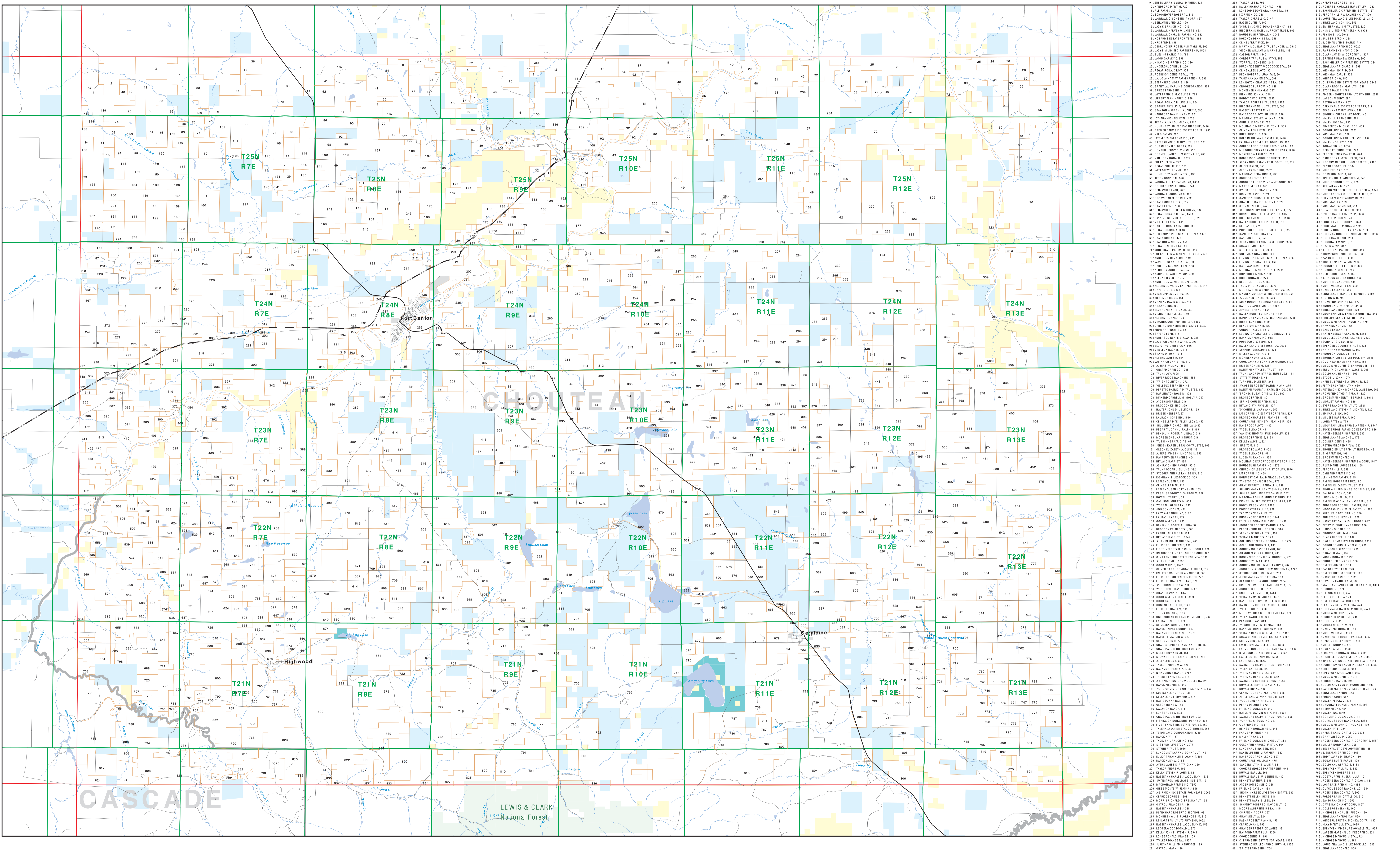


Table listing parcel numbers, owner names, and total acres for the Fort Benton area.

Legend for land ownership types: Private, State Lands, Forest Service, Bureau of Land Management, National Park Service, Other Federal Land, Fish and Wildlife Service.

Legend for infrastructure and features: Road, Primitive Road, River, Stream/Creek, Intermittent Creek, Township, County Border, Interstate, Secondary Highway, Highway.

NOTES: This map was produced as a joint effort between the MT Dept of Fish, Wildlife, Parks and the Montana Natural Resource Information System (NRSIS).

USGS 100,000 Scale Quadrangle Index table with grid coordinates and corresponding map sheet numbers.