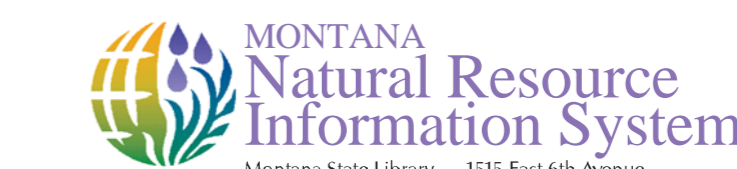


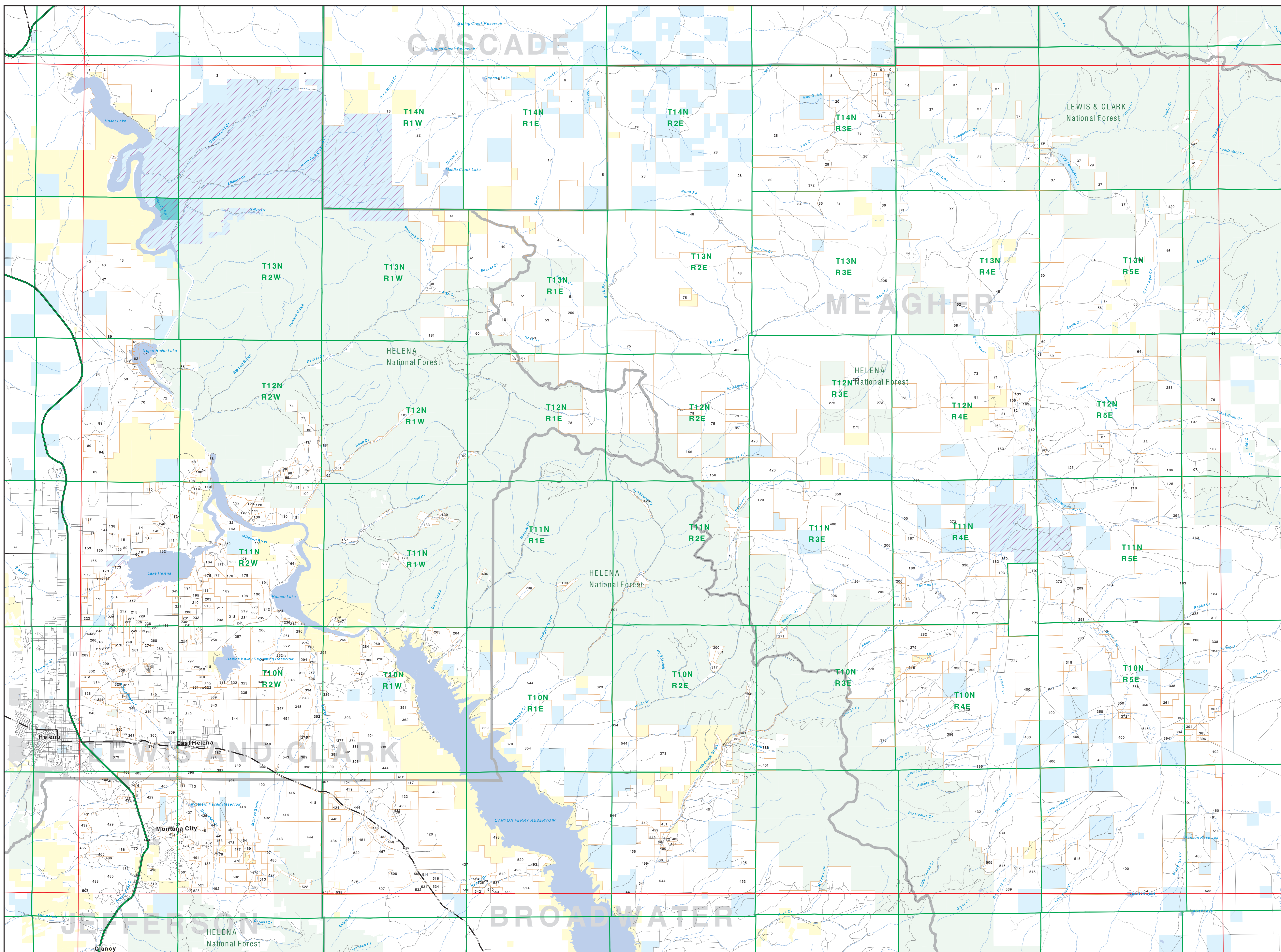


Private Land Ownership Identification

CANYON FERRY DAM - (46111b)



Parcel/Block/Owner Name, Total Acres



- Parcel/Block/Owner Name, Total Acres
- 1 CORDON ROBERTSON JOHN, 56
 - 2 WOODS & WOODS 1959, 115
 - 3 STEVENS RANCH CO, 198
 - 4 WADSWORTH FARMS, 228
 - 5 WOLF & WOLF 1984, 232
 - 6 WOLF & WOLF 1984, 232
 - 7 BAIN BRANCH COMPANY INCORPORATED, 189
 - 8 ANTHONY LAVAY, 126
 - 9 ANTHONY LAVAY, 126
 - 10 ANTHONY LAVAY, 126
 - 11 HONOLULU CHRISTIAN CHURCH, 479
 - 12 HONOLULU CHRISTIAN CHURCH, 479
 - 13 WOODWARD HENRY CAMERON, 163
 - 14 WOODWARD HENRY CAMERON, 163
 - 15 WOODWARD HENRY CAMERON, 163
 - 16 CROWN ESTATE INC, 130
 - 17 CROWN ESTATE INC, 130
 - 18 CROWN ESTATE INC, 130
 - 19 CROWN ESTATE INC, 130
 - 20 WOODWARD HENRY CAMERON, 163
 - 21 WOODWARD HENRY CAMERON, 163
 - 22 WOODWARD HENRY CAMERON, 163
 - 23 WOODWARD HENRY CAMERON, 163
 - 24 WOODWARD HENRY CAMERON, 163
 - 25 WOODWARD HENRY CAMERON, 163
 - 26 WOODWARD HENRY CAMERON, 163
 - 27 WOODWARD HENRY CAMERON, 163
 - 28 WOODWARD HENRY CAMERON, 163
 - 29 WOODWARD HENRY CAMERON, 163
 - 30 WOODWARD HENRY CAMERON, 163
 - 31 WOODWARD HENRY CAMERON, 163
 - 32 WOODWARD HENRY CAMERON, 163
 - 33 WOODWARD HENRY CAMERON, 163
 - 34 WOODWARD HENRY CAMERON, 163
 - 35 WOODWARD HENRY CAMERON, 163
 - 36 WOODWARD HENRY CAMERON, 163
 - 37 WOODWARD HENRY CAMERON, 163
 - 38 WOODWARD HENRY CAMERON, 163
 - 39 WOODWARD HENRY CAMERON, 163
 - 40 WOODWARD HENRY CAMERON, 163
 - 41 WOODWARD HENRY CAMERON, 163
 - 42 WOODWARD HENRY CAMERON, 163
 - 43 WOODWARD HENRY CAMERON, 163
 - 44 WOODWARD HENRY CAMERON, 163
 - 45 WOODWARD HENRY CAMERON, 163
 - 46 WOODWARD HENRY CAMERON, 163
 - 47 WOODWARD HENRY CAMERON, 163
 - 48 WOODWARD HENRY CAMERON, 163
 - 49 WOODWARD HENRY CAMERON, 163
 - 50 WOODWARD HENRY CAMERON, 163
 - 51 WOODWARD HENRY CAMERON, 163
 - 52 WOODWARD HENRY CAMERON, 163
 - 53 WOODWARD HENRY CAMERON, 163
 - 54 WOODWARD HENRY CAMERON, 163
 - 55 WOODWARD HENRY CAMERON, 163
 - 56 WOODWARD HENRY CAMERON, 163
 - 57 WOODWARD HENRY CAMERON, 163
 - 58 WOODWARD HENRY CAMERON, 163
 - 59 WOODWARD HENRY CAMERON, 163
 - 60 WOODWARD HENRY CAMERON, 163
 - 61 WOODWARD HENRY CAMERON, 163
 - 62 WOODWARD HENRY CAMERON, 163
 - 63 WOODWARD HENRY CAMERON, 163
 - 64 WOODWARD HENRY CAMERON, 163
 - 65 WOODWARD HENRY CAMERON, 163
 - 66 WOODWARD HENRY CAMERON, 163
 - 67 WOODWARD HENRY CAMERON, 163
 - 68 WOODWARD HENRY CAMERON, 163
 - 69 WOODWARD HENRY CAMERON, 163
 - 70 WOODWARD HENRY CAMERON, 163
 - 71 WOODWARD HENRY CAMERON, 163
 - 72 WOODWARD HENRY CAMERON, 163
 - 73 WOODWARD HENRY CAMERON, 163
 - 74 WOODWARD HENRY CAMERON, 163
 - 75 WOODWARD HENRY CAMERON, 163
 - 76 WOODWARD HENRY CAMERON, 163
 - 77 WOODWARD HENRY CAMERON, 163
 - 78 WOODWARD HENRY CAMERON, 163
 - 79 WOODWARD HENRY CAMERON, 163
 - 80 WOODWARD HENRY CAMERON, 163
 - 81 WOODWARD HENRY CAMERON, 163
 - 82 WOODWARD HENRY CAMERON, 163
 - 83 WOODWARD HENRY CAMERON, 163
 - 84 WOODWARD HENRY CAMERON, 163
 - 85 WOODWARD HENRY CAMERON, 163
 - 86 WOODWARD HENRY CAMERON, 163
 - 87 WOODWARD HENRY CAMERON, 163
 - 88 WOODWARD HENRY CAMERON, 163
 - 89 WOODWARD HENRY CAMERON, 163
 - 90 WOODWARD HENRY CAMERON, 163
 - 91 WOODWARD HENRY CAMERON, 163
 - 92 WOODWARD HENRY CAMERON, 163
 - 93 WOODWARD HENRY CAMERON, 163
 - 94 WOODWARD HENRY CAMERON, 163
 - 95 WOODWARD HENRY CAMERON, 163
 - 96 WOODWARD HENRY CAMERON, 163
 - 97 WOODWARD HENRY CAMERON, 163
 - 98 WOODWARD HENRY CAMERON, 163
 - 99 WOODWARD HENRY CAMERON, 163
 - 100 WOODWARD HENRY CAMERON, 163

Private	State Lands	Road
Forest Service	Local Govt	Primitive Road
Bureau of Land Management	Native American	River
National Park Service	MFWP - WMA	Stream/Creek
Other Federal Land	Lake/Reservoir	Intermittent Creek
Fish and Wildlife Service	Interstate	Township
	Secondary Highway	County Border
	Highway	Fish Wildlife & Parks Wildlife Management Area

NOTES:

Not all parcels are shown on this map. For a complete list of parcels, please refer to the Montana Department of Fish, Wildlife, and Parks (FWP) and the Montana Department of Natural Resources and Conservation (MDNR) records. This map is intended as a general reference and is not a legal document. The user assumes responsibility for any use of this map. The user is advised to verify all information shown on this map with the appropriate agency. The user is advised to consult the appropriate agency for more information.

SOURCES/ACKNOWLEDGMENTS

This map was produced as a part of the Montana Department of Fish, Wildlife, and Parks (FWP) and the Montana Department of Natural Resources and Conservation (MDNR) Private Land Ownership Identification project. The project was funded by the Montana Department of Fish, Wildlife, and Parks (FWP) and the Montana Department of Natural Resources and Conservation (MDNR). The project was completed in August 2009. The map is based on the 1:100,000 scale USGS Topographic Map Series and the Montana Department of Fish, Wildlife, and Parks (FWP) and the Montana Department of Natural Resources and Conservation (MDNR) records. The map is a product of the Montana Department of Fish, Wildlife, and Parks (FWP) and the Montana Department of Natural Resources and Conservation (MDNR). The map is a product of the Montana Department of Fish, Wildlife, and Parks (FWP) and the Montana Department of Natural Resources and Conservation (MDNR).

The private land data were developed for the Montana Database Project. These data are provided through a cooperative effort between the Montana Department of Fish, Wildlife, and Parks (FWP) and the Montana Department of Natural Resources and Conservation (MDNR). The data are provided to the public for informational purposes only. The user assumes responsibility for any use of this map. The user is advised to verify all information shown on this map with the appropriate agency. The user is advised to consult the appropriate agency for more information.

The base data for the public ownership data is 1:100,000. Many of the private ownership data are digitized from 1:50,000 scale maps. Many of the private ownership data are digitized from 1:25,000 scale maps or aerial photography. The user assumes responsibility for any use of this map. The user is advised to verify all information shown on this map with the appropriate agency. The user is advised to consult the appropriate agency for more information.

Map produced August 2009 with ownership data current as of June 3, 2009.

11100	11110	11120	11130	11140	11150	11160	11170	11180	11190
48110	48120	48130	48140	48150	48160	48170	48180	48190	48200
1150	11510	11520	11530	11540	11550	11560	11570	11580	11590
1160	11610	11620	11630	11640	11650	11660	11670	11680	11690
1170	11710	11720	11730	11740	11750	11760	11770	11780	11790
1180	11810	11820	11830	11840	11850	11860	11870	11880	11890
1190	11910	11920	11930	11940	11950	11960	11970	11980	11990
1200	12010	12020	12030	12040	12050	12060	12070	12080	12090
1210	12110	12120	12130	12140	12150	12160	12170	12180	12190
1220	12210	12220	12230	12240	12250	12260	12270	12280	12290
1230	12310	12320	12330	12340	12350	12360	12370	12380	12390
1240	12410	12420	12430	12440	12450	12460	12470	12480	12490
1250	12510	12520	12530	12540	12550	12560	12570	12580	12590
1260	12610	12620	12630	12640	12650	12660	12670	12680	12690
1270	12710	12720	12730	12740	12750	12760	12770	12780	12790
1280	12810	12820	12830	12840	12850	12860	12870	12880	12890
1290	12910	12920	12930	12940	12950	12960	12970	12980	12990
1300	13010	13020	13030	13040	13050	13060	13070	13080	13090
1310	13110	13120	13130	13140	13150	13160	13170	13180	13190
1320	13210	13220	13230	13240	13250	13260	13270	13280	13290
1330	13310	13320	13330	13340	13350	13360	13370	13380	13390
1340	13410	13420	13430	13440	13450	13460	13470	13480	13490
1350	13510	13520	13530	13540	13550	13560	13570	13580	13590
1360	13610	13620	13630	13640	13650	13660	13670	13680	13690
1370	13710	13720	13730	13740	13750	13760	13770	13780	13790
1380	13810	13820	13830	13840	13850	13860	13870	13880	13890
1390	13910	13920	13930	13940	13950	13960	13970	13980	13990
1400	14010	14020	14030	14040	14050	14060	14070	14080	14090
1410	14110	14120	14130	14140	14150	14160	14170	14180	14190