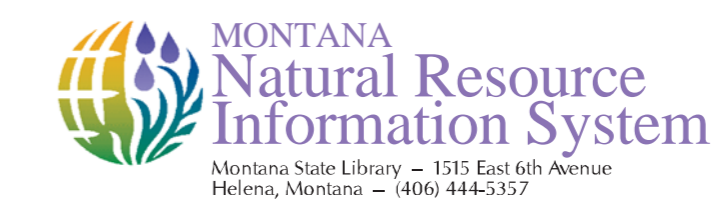
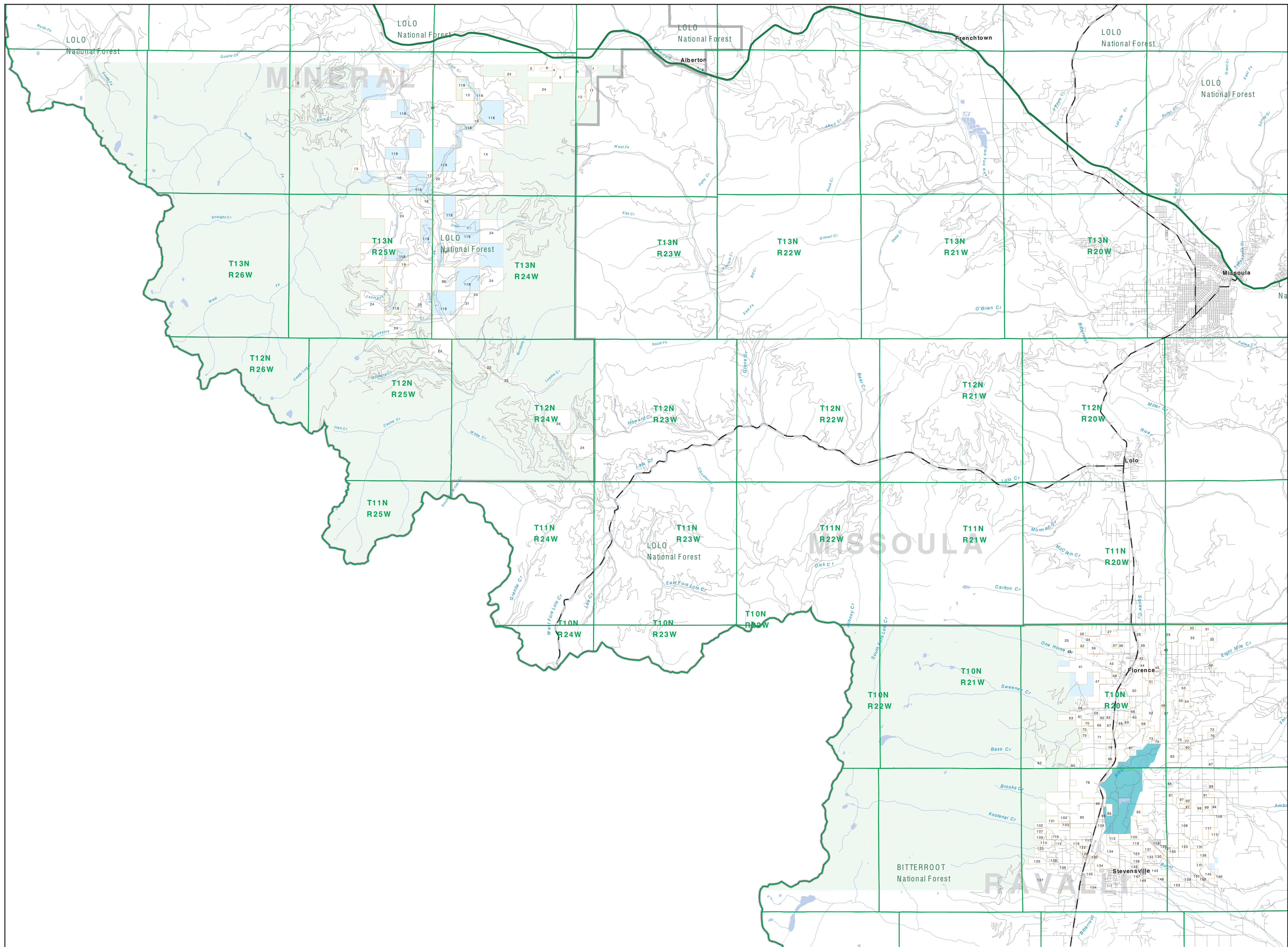




# Private Land Ownership Identification MISSOULA WEST - (46114b)



Parcel Num: Owner Name, Total Acres

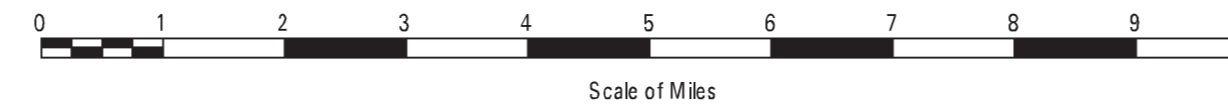


1. BROWN LINDA JOHANN 293
2. WOOD WILLIAM R 209
3. BROWN LINDA 293
4. FORD PATRICIA JEN MOSES 12
5. BUCKLEY 17
6. CALSON WILLIAM H JACOBSON 41
7. FROST 20
8. FROST DWANE JAMES 251
9. BEECHER JAMES WALTER 150
10. FROST DWANE JAMES 251
11. LANTIERO BARTON ARNE 212
12. JOLAN ARNAN J AND TERRY L 128
13. JOLAN ARNAN J AND TERRY L 128
14. KISCH FAMILY TRUST 120
15. KISCH FAMILY TRUST 120
16. KISCH FAMILY TRUST 120
17. KISCH FAMILY TRUST 120
18. KISCH FAMILY TRUST 120
19. KISCH FAMILY TRUST 120
20. KISCH FAMILY TRUST 120
21. KISCH FAMILY TRUST 120
22. KISCH FAMILY TRUST 120
23. KISCH FAMILY TRUST 120
24. KISCH FAMILY TRUST 120
25. KISCH FAMILY TRUST 120
26. KISCH FAMILY TRUST 120
27. KISCH FAMILY TRUST 120
28. KISCH FAMILY TRUST 120
29. KISCH FAMILY TRUST 120
30. KISCH FAMILY TRUST 120
31. KISCH FAMILY TRUST 120
32. KISCH FAMILY TRUST 120
33. KISCH FAMILY TRUST 120
34. KISCH FAMILY TRUST 120
35. KISCH FAMILY TRUST 120
36. KISCH FAMILY TRUST 120
37. KISCH FAMILY TRUST 120
38. KISCH FAMILY TRUST 120
39. KISCH FAMILY TRUST 120
40. KISCH FAMILY TRUST 120
41. KISCH FAMILY TRUST 120
42. KISCH FAMILY TRUST 120
43. KISCH FAMILY TRUST 120
44. KISCH FAMILY TRUST 120
45. KISCH FAMILY TRUST 120
46. KISCH FAMILY TRUST 120
47. KISCH FAMILY TRUST 120
48. KISCH FAMILY TRUST 120
49. KISCH FAMILY TRUST 120
50. KISCH FAMILY TRUST 120
51. KISCH FAMILY TRUST 120
52. KISCH FAMILY TRUST 120
53. KISCH FAMILY TRUST 120
54. KISCH FAMILY TRUST 120
55. KISCH FAMILY TRUST 120
56. KISCH FAMILY TRUST 120
57. KISCH FAMILY TRUST 120
58. KISCH FAMILY TRUST 120
59. KISCH FAMILY TRUST 120
60. KISCH FAMILY TRUST 120
61. KISCH FAMILY TRUST 120
62. KISCH FAMILY TRUST 120
63. KISCH FAMILY TRUST 120
64. KISCH FAMILY TRUST 120
65. KISCH FAMILY TRUST 120
66. KISCH FAMILY TRUST 120
67. KISCH FAMILY TRUST 120
68. KISCH FAMILY TRUST 120
69. KISCH FAMILY TRUST 120
70. KISCH FAMILY TRUST 120
71. KISCH FAMILY TRUST 120
72. KISCH FAMILY TRUST 120
73. KISCH FAMILY TRUST 120
74. KISCH FAMILY TRUST 120
75. KISCH FAMILY TRUST 120
76. KISCH FAMILY TRUST 120
77. KISCH FAMILY TRUST 120
78. KISCH FAMILY TRUST 120
79. KISCH FAMILY TRUST 120
80. KISCH FAMILY TRUST 120
81. KISCH FAMILY TRUST 120
82. KISCH FAMILY TRUST 120
83. KISCH FAMILY TRUST 120
84. KISCH FAMILY TRUST 120
85. KISCH FAMILY TRUST 120
86. KISCH FAMILY TRUST 120
87. KISCH FAMILY TRUST 120
88. KISCH FAMILY TRUST 120
89. KISCH FAMILY TRUST 120
90. KISCH FAMILY TRUST 120
91. KISCH FAMILY TRUST 120
92. KISCH FAMILY TRUST 120
93. KISCH FAMILY TRUST 120
94. KISCH FAMILY TRUST 120
95. KISCH FAMILY TRUST 120
96. KISCH FAMILY TRUST 120
97. KISCH FAMILY TRUST 120
98. KISCH FAMILY TRUST 120
99. KISCH FAMILY TRUST 120
100. KISCH FAMILY TRUST 120

**Legend**

- Private
- State Lands
- Forest Service
- Bureau of Land Management
- National Park Service
- Other Federal Land
- Fish and Wildlife Service
- Road
- Primitive Road
- River
- Stream/Creek
- Intermittent Creek
- Township
- County Border
- Fish Wildlife & Parks Wildlife Management Area
- Native American
- MFWP - WMA
- Lake/Reservoir
- Interstate
- Secondary Highway
- Highway

**NOTES:**  
Not all legend items may appear on this map.  
Parcel numbers on this map do not include section to any lands.  
The land ownership data displayed on this map may not be complete and may contain errors in location or ownership information.  
DISCLAIMERS:  
The Montana Natural Resource Information System (NRIS) is a project of the Montana Department of Fish, Wildlife & Parks (FWP) and the Montana Natural Resource Information System (NRIS) Department of Administration (DOA). The Montana Department of Fish, Wildlife & Parks (FWP) is a work cooperative with all state and federal land management agencies, to develop accurate land ownership maps, in the State.  
The public land data is from the Montana Natural Resource Information System (NRIS) data collection. Much of this data was originally digitized by the Bureau of Land Management (BLM) from 1:100,000 scale BLM Bureau Management System maps. Additional information, corrections and updates (especially for small lands and private lands) were added by the University of Montana, Wildlife Status Analysis Unit, during 1995-1998. Since 1998, the Montana Natural Resource Information System has made numerous updates and corrections (especially to state trust lands, Montana Fish, Wildlife & Parks areas, US Fish & Wildlife Service areas, and cooperative easements). These data are based on data supplied by the various public agencies and land trusts, and have not been verified against county or Montana Department of Revenue records.



**SOURCES/ACKNOWLEDGEMENTS**  
This map was produced as a joint effort between the MT Dept of Fish, Wildlife, and Parks (FWP) and the Montana Natural Resource Information System (NRIS) Department of Administration (DOA), the Montana Department of Revenue (DOR), other state agencies, local, governmental, USDOI BLM and private owners. Land ownership on this map represents a single snapshot of ownership parcels that are at least 40 acres in size. The DOA maintains the GIS cadastral layer and the DOA maintains the private ownership information.  
The base scale for the public ownership data is 1:100,000. Though many of the recent scale map data are digitized from 1:24,000 scale maps or survey data, private ownership data is accurate to scales of 1:24,000 or smaller.

**USGS 100,000 Scale Quadrangle Index**

81100	81110	81120	81130	81140	81150	81160	81170	81180	81190	81200
81210	81220	81230	81240	81250	81260	81270	81280	81290	81300	81310
81320	81330	81340	81350	81360	81370	81380	81390	81400	81410	81420
81430	81440	81450	81460	81470	81480	81490	81500	81510	81520	81530
81540	81550	81560	81570	81580	81590	81600	81610	81620	81630	81640
81650	81660	81670	81680	81690	81700	81710	81720	81730	81740	81750
81760	81770	81780	81790	81800	81810	81820	81830	81840	81850	81860
81870	81880	81890	81900	81910	81920	81930	81940	81950	81960	81970
81980	81990	82000	82010	82020	82030	82040	82050	82060	82070	82080
82090	82100	82110	82120	82130	82140	82150	82160	82170	82180	82190
82200	82210	82220	82230	82240	82250	82260	82270	82280	82290	82300