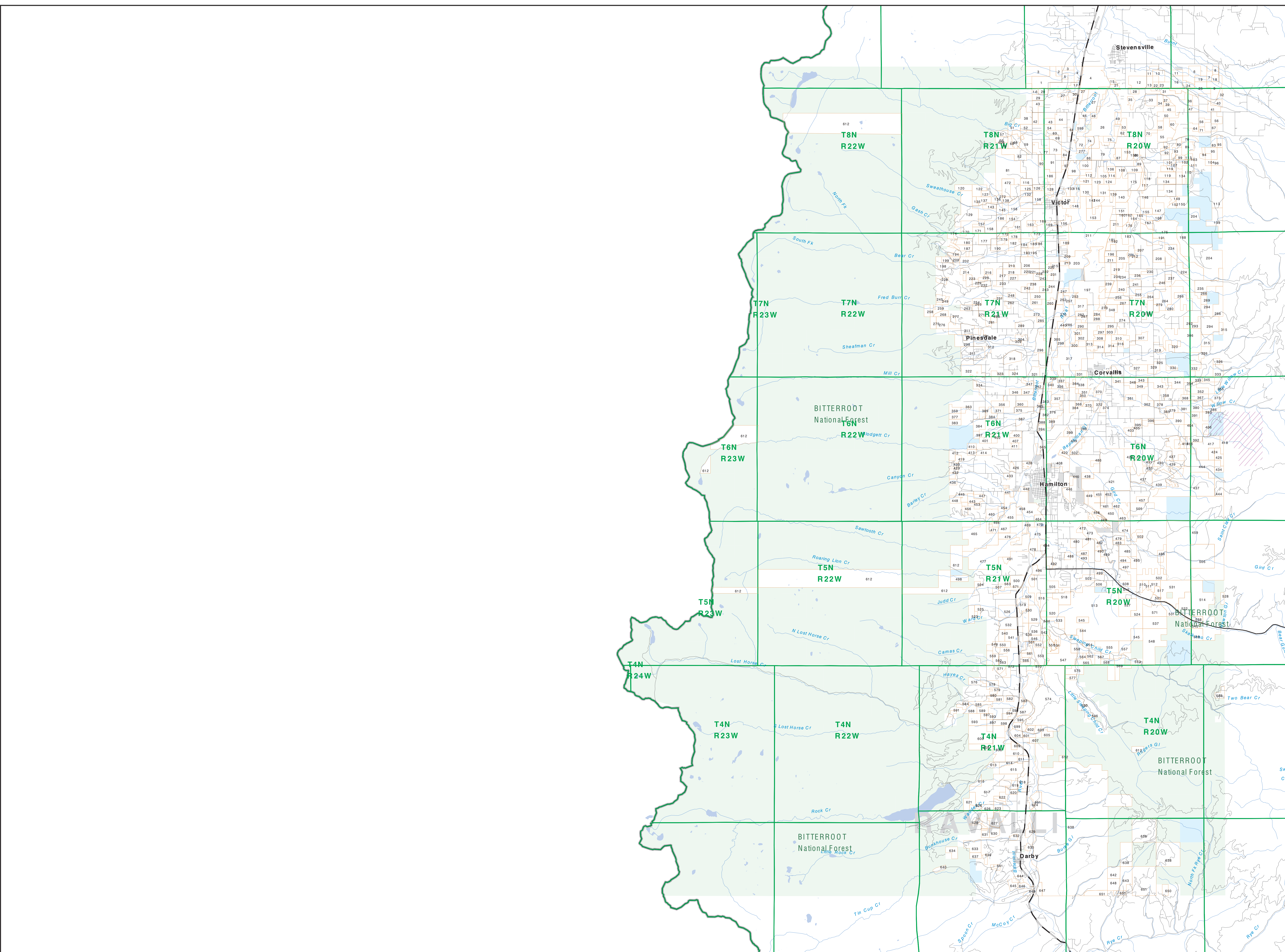


Private Land Ownership Identification

HAMILTON - (46114a)

Parcel Num. Owner Name, Total Acres



1	BADGER C&M INC. DEVEL. L 394	201	10 HARTMAN TRUST 41	901	1410 CHAMBERLAIN MARLENE 49
2	BADGER C&M W. CHRYL L 66	202	UNION FAMILY TRUST 71	902	MILCHBERGER MARILEE 48
3	BADGER C&M W. CHRYL L 66	203	UNION FAMILY TRUST 72	903	MILCHBERGER MARILEE 49
4	BADGER C&M W. CHRYL L 66	204	VACANT 1000	904	NORTH ALLEGHENY CORP. 41
5	BADGER C&M W. CHRYL L 66	205	WILSON J. TRUST 115	905	MILCHBERGER MARILEE 48
6	BADGER C&M W. CHRYL L 66	206	HULE BRUCE A. PATRICIA A 140	906	FOOD TOMAS A. ELIZABETH A 74
7	BADGER C&M W. CHRYL L 66	207	HENDERSON R. DORA L 100	907	FOOD TOMAS A. ELIZABETH A 74
8	BADGER C&M W. CHRYL L 66	208	PAZDANIS S. WALTER S 20	908	SMALL BARTLEY D. 75
9	BADGER C&M W. CHRYL L 66	209	PAZDANIS S. WALTER S 20	909	FOOD TOMAS A. ELIZABETH A 74
10	BADGER C&M W. CHRYL L 66	210	PAZDANIS S. WALTER S 20	910	THREE MOUNTAIN TRUST LLC 79
11	BADGER C&M W. CHRYL L 66	211	PAZDANIS S. WALTER S 20	911	THREE MOUNTAIN TRUST LLC 79
12	BADGER C&M W. CHRYL L 66	212	PAZDANIS S. WALTER S 20	912	QUARTZ HILL 112
13	BADGER C&M W. CHRYL L 66	213	PAZDANIS S. WALTER S 20	913	THE PARK TRUST 100
14	BADGER C&M W. CHRYL L 66	214	BRANDON CHARLES J. JULIE 300	914	SHAKERS CREEK RANCH LLC 1108
15	BADGER C&M W. CHRYL L 66	215	WESTON BERNARD W. PATRICIA A 41	915	WHEELER CREEK RANCH LLC 1108
16	BADGER C&M W. CHRYL L 66	216	HAPPOLD MOUNTAIN RANCH INC. 589	916	MICHELLE WILLIAM W. KAREN S. 53
17	BADGER C&M W. CHRYL L 66	217	HAPPOLD MOUNTAIN RANCH INC. 589	917	MC BRIDE SUEAN A. TRUSTEE 72
18	BADGER C&M W. CHRYL L 66	218	VALERIO CHRISTOPHER M. AND. 50	918	LINE LORNA P. AND. 26
19	BADGER C&M W. CHRYL L 66	219	HENDERSON RICHARD W. TRUSTEE 40	919	LINE LORNA P. AND. 26
20	BADGER C&M W. CHRYL L 66	220	HENDERSON RICHARD W. TRUSTEE 40	920	LINE LORNA P. AND. 26
21	BADGER C&M W. CHRYL L 66	221	HENDERSON RICHARD W. TRUSTEE 40	921	LINE LORNA P. AND. 26
22	BADGER C&M W. CHRYL L 66	222	HENDERSON RICHARD W. TRUSTEE 40	922	LINE LORNA P. AND. 26
23	BADGER C&M W. CHRYL L 66	223	HENDERSON RICHARD W. TRUSTEE 40	923	LINE LORNA P. AND. 26
24	BADGER C&M W. CHRYL L 66	224	HENDERSON RICHARD W. TRUSTEE 40	924	LINE LORNA P. AND. 26
25	BADGER C&M W. CHRYL L 66	225	HENDERSON RICHARD W. TRUSTEE 40	925	LINE LORNA P. AND. 26
26	BADGER C&M W. CHRYL L 66	226	HENDERSON RICHARD W. TRUSTEE 40	926	LINE LORNA P. AND. 26
27	BADGER C&M W. CHRYL L 66	227	HENDERSON RICHARD W. TRUSTEE 40	927	LINE LORNA P. AND. 26
28	BADGER C&M W. CHRYL L 66	228	HENDERSON RICHARD W. TRUSTEE 40	928	LINE LORNA P. AND. 26
29	BADGER C&M W. CHRYL L 66	229	HENDERSON RICHARD W. TRUSTEE 40	929	LINE LORNA P. AND. 26
30	BADGER C&M W. CHRYL L 66	230	HENDERSON RICHARD W. TRUSTEE 40	930	LINE LORNA P. AND. 26
31	BADGER C&M W. CHRYL L 66	231	HENDERSON RICHARD W. TRUSTEE 40	931	LINE LORNA P. AND. 26
32	BADGER C&M W. CHRYL L 66	232	HENDERSON RICHARD W. TRUSTEE 40	932	LINE LORNA P. AND. 26
33	BADGER C&M W. CHRYL L 66	233	HENDERSON RICHARD W. TRUSTEE 40	933	LINE LORNA P. AND. 26
34	BADGER C&M W. CHRYL L 66	234	HENDERSON RICHARD W. TRUSTEE 40	934	LINE LORNA P. AND. 26
35	BADGER C&M W. CHRYL L 66	235	HENDERSON RICHARD W. TRUSTEE 40	935	LINE LORNA P. AND. 26
36	BADGER C&M W. CHRYL L 66	236	HENDERSON RICHARD W. TRUSTEE 40	936	LINE LORNA P. AND. 26
37	BADGER C&M W. CHRYL L 66	237	HENDERSON RICHARD W. TRUSTEE 40	937	LINE LORNA P. AND. 26
38	BADGER C&M W. CHRYL L 66	238	HENDERSON RICHARD W. TRUSTEE 40	938	LINE LORNA P. AND. 26
39	BADGER C&M W. CHRYL L 66	239	HENDERSON RICHARD W. TRUSTEE 40	939	LINE LORNA P. AND. 26
40	BADGER C&M W. CHRYL L 66	240	HENDERSON RICHARD W. TRUSTEE 40	940	LINE LORNA P. AND. 26
41	BADGER C&M W. CHRYL L 66	241	HENDERSON RICHARD W. TRUSTEE 40	941	LINE LORNA P. AND. 26
42	BADGER C&M W. CHRYL L 66	242	HENDERSON RICHARD W. TRUSTEE 40	942	LINE LORNA P. AND. 26
43	BADGER C&M W. CHRYL L 66	243	HENDERSON RICHARD W. TRUSTEE 40	943	LINE LORNA P. AND. 26
44	BADGER C&M W. CHRYL L 66	244	HENDERSON RICHARD W. TRUSTEE 40	944	LINE LORNA P. AND. 26
45	BADGER C&M W. CHRYL L 66	245	HENDERSON RICHARD W. TRUSTEE 40	945	LINE LORNA P. AND. 26
46	BADGER C&M W. CHRYL L 66	246	HENDERSON RICHARD W. TRUSTEE 40	946	LINE LORNA P. AND. 26
47	BADGER C&M W. CHRYL L 66	247	HENDERSON RICHARD W. TRUSTEE 40	947	LINE LORNA P. AND. 26
48	BADGER C&M W. CHRYL L 66	248	HENDERSON RICHARD W. TRUSTEE 40	948	LINE LORNA P. AND. 26
49	BADGER C&M W. CHRYL L 66	249	HENDERSON RICHARD W. TRUSTEE 40	949	LINE LORNA P. AND. 26
50	BADGER C&M W. CHRYL L 66	250	HENDERSON RICHARD W. TRUSTEE 40	950	LINE LORNA P. AND. 26

Private (light green)

State Lands (light blue)

Forest Service (light purple)

Bureau of Land Management (light yellow)

National Park Service (light orange)

Other Federal Land (light pink)

Fish and Wildlife Service (light cyan)

Local Govt (light grey)

Native American (light brown)

MFPW - WMA (light blue with diagonal lines)

Lake/Reservoir (blue)

Interstate (thick black line)

Secondary Highway (thin black line)

Highway (medium black line)

Road (thin grey line)

Primitive Road (dashed grey line)

River (blue wavy line)

Stream/Creek (blue wavy line)

Intermittent Creek (dashed blue wavy line)

Township (dotted green line)

County Border (dashed grey line)

Fish Wildlife & Parks Wildlife Management Area (blue wavy line)

NOTES:
Not all legend items may appear on the map.
Features shown on the map do not represent the actual location of any land.
The land status data displayed on this map may not be complete and may contain errors in boundary locations and/or coding.
DISCLAIMERS:
The MT Natural Heritage Program, MT State Library, MT Dept. of Administration and MT Dept. of Revenue make no representation or warranty whatsoever with respect to the accuracy or completeness of the data contained in these maps and assume no responsibility for the suitability of these data for a particular purpose. These agencies will not be liable for any damages, including any consequential damages, resulting from the use of these maps. The ownership boundaries displayed on this map are not based on land survey data and are not subject to legal proceedings. This map displays public and private land ownership information derived from several sources and continues to be corrected and updated.

SOURCES & ACKNOWLEDGEMENTS
This map was produced as a joint effort between the MT Dept. of Fish, Wildlife, and Parks (FWP) and the Montana Natural Resource Information System (MNRIS) of the Montana Department of Administration (MDA). MNRIS is a joint effort between the MDA, other state agencies, local governments, USDOI BLM and private enterprise. Land ownership data is derived from a variety of sources, including the MDA, USDOI BLM, and private enterprise. The MDA maintains the GIS database layer and the DOR maintains the private ownership information.

The private land data were developed for the Montana Cadastral Database Project. These data are provided through a cooperative effort between the Montana Department of Administration (MDA), the Montana Department of Revenue (DOR), other state agencies, local governments, USDOI BLM and private enterprise. Land ownership data is derived from a variety of sources, including the MDA, USDOI BLM, and private enterprise. The MDA maintains the GIS database layer and the DOR maintains the private ownership information.

The base scale for the public ownership data is 1:100,000, though many of the recent cadastral information data digitized from 1:24,000 scale maps or survey data. Private ownership data is accurate to scale of 1:24,000 or smaller.

USGS 100,000 Scale Quadrangle Index

81100	81110	81120	81130	81140	81150	81160	81170	81180	81190
81100	81110	81120	81130	81140	81150	81160	81170	81180	81190
81100	81110	81120	81130	81140	81150	81160	81170	81180	81190
81100	81110	81120	81130	81140	81150	81160	81170	81180	81190
81100	81110	81120	81130	81140	81150	81160	81170	81180	81190
81100	81110	81120	81130	81140	81150	81160	81170	81180	81190
81100	81110	81120	81130	81140	81150	81160	81170	81180	81190
81100	81110	81120	81130	81140	81150	81160	81170	81180	81190
81100	81110	81120	81130	81140	81150	81160	81170	81180	81190
81100	81110	81120	81130	81140	81150	81160	81170	81180	81190