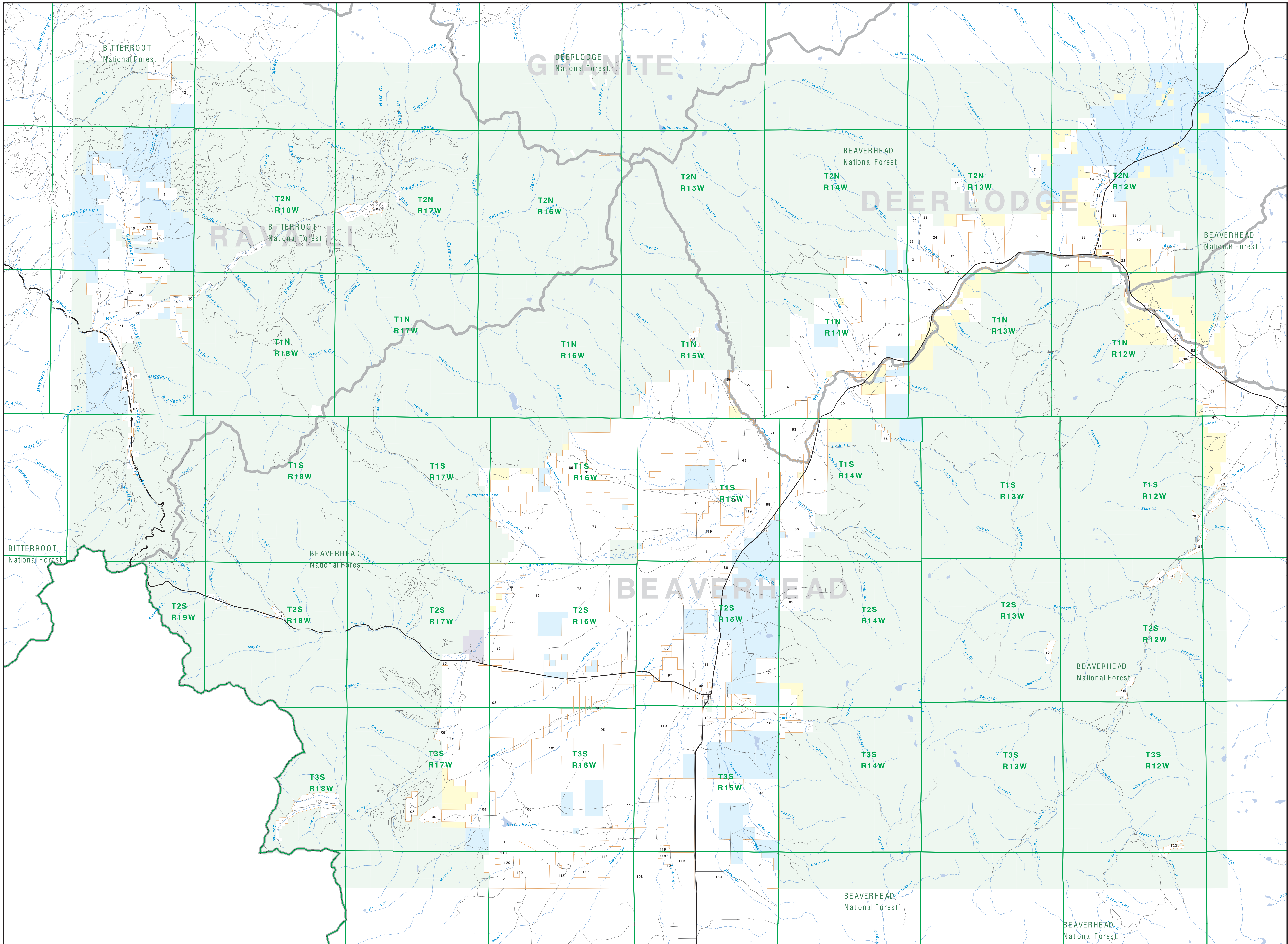


Private Land Ownership Identification

WISDOM - (45113b)



Parcel Name: Owner Name, Total Acres

- 1 G. RACH L.L.C. 497
- 2 WESTWIND L.L.C. 308
- 3 J.R. MILLER RANCHES L.L.C. 192
- 4 U.S. FOREST SERVICE 45
- 5 CANTON INVESTMENT I, L.P. 320
- 6 MULLER GROUP OF FIDS, INC. 307
- 7 BOY SCOUTS OF AMERICA MT COLOS. 387
- 8 BULLY SPRINGER HOLDINGS, CORP. 105
- 9 FRANCIS ROBERT C. SHAMRON 159
- 10 CANTON INVESTMENT L.L.C. 152
- 11 WENDLER DAVID E. 278
- 12 HAYES KENNETH O. LARRY DONOHUE 103
- 13 HAYES KENNETH O. LARRY DONOHUE 56
- 14 TRISTE JACOB 36
- 15 MOORE STEVEN A. 107
- 16 BERTS COMPANY L.L.C. 288
- 17 WHITE MARTIN A. SHELBA 154
- 18 HAYES KENNETH O. 51
- 19 CHERRIE JOHN H. 338
- 20 LUCKER THOMAS A. CATHIE ANN 1604
- 21 LAMARCHE RANCH 1008
- 22 LAMARCHE RANCH 1008
- 23 LAMARCHE RANCH LIMITED P. 1009
- 24 HARVEST 488
- 25 WATSON SIDE ENTERPRISES L.L.C. 1714
- 26 PALMARES CATTLE COMPANY 3804
- 27 THOMPSON DONALD 82
- 28 BERENA VISTA L.L.C. 50
- 29 THOMPSON DONALD 82
- 30 K.L. SPEAR JAYNE SPEAR IRR WEA 421
- 31 CEMAS PATRICIA ANN 110
- 32 WESTON WARREN FAMILY LTD. PT. 788
- 33 WEAVER B. RUSON 41
- 34 BERNARD RANCH COMPANY 3767
- 35 RACHON RAY RANCH 7887
- 36 HALLSTON RANCH INC. 2725
- 37 RACHON RAY RANCH 7887
- 38 JOSEPH J. RACHON 1191
- 39 JOSEPH J. RACHON 1191
- 40 JOSEPH J. RACHON 1191
- 41 BERNARD RANCH 103
- 42 EMMAH BEHARD 100
- 43 CAMP CREEK RANCH INC. 413
- 44 BACON RAY RANCH 878
- 45 BOSTYNE VAN ROY 45
- 46 MONTANA DEPARTMENT OF TRANSPORT 40
- 47 SPOLOAN CHEVY F. 85
- 48 SPOLOAN CHEVY F. 85
- 49 SPOLOAN CHEVY F. 85
- 50 SPOLOAN CHEVY F. 85
- 51 BELL RACHON RANCH CO. 4155
- 52 STOCKTON LODGE INC. 97
- 53 STOCKTON LODGE INC. 97
- 54 STOCKTON LODGE INC. 97
- 55 STOCKTON LODGE INC. 97
- 56 STOCKTON LODGE INC. 97
- 57 SADDLE VISTA RANCH L.L.C. 1171
- 58 SADDLE VISTA RANCH L.L.C. 1171
- 59 PAUL CLIFFOR S. 78
- 60 CHRISTIANSEN RACH RANCH 4531
- 61 WHEDELL JOHN W. MARGIE 214
- 62 CHRISTIANSEN RACH RANCH 4531
- 63 CHRISTIANSEN RACH RANCH 4531
- 64 LINDA JERRY T. 47
- 65 SPARROW RANCH GRAZING ASSOC. 3882
- 66 SPARROW RANCH GRAZING ASSOC. 3882
- 67 SPARROW RANCH GRAZING ASSOC. 3882
- 68 SPARROW RANCH GRAZING ASSOC. 3882
- 69 SPARROW RANCH GRAZING ASSOC. 3882
- 70 SPARROW RANCH GRAZING ASSOC. 3882
- 71 SPARROW RANCH GRAZING ASSOC. 3882
- 72 SPARROW RANCH GRAZING ASSOC. 3882
- 73 SPARROW RANCH GRAZING ASSOC. 3882
- 74 SPARROW RANCH GRAZING ASSOC. 3882
- 75 ELSE FRED 388
- 76 CONNOLLY J.W. 86
- 77 BUTLER RANCHES INC. 159
- 78 BUTLER RANCHES INC. 159
- 79 THAYER THOMAS A. 43
- 80 BUTLER RANCHES INC. 159
- 81 WEAVER RAYMOND R. 844
- 82 CLARE ANNE L. TO PARTNERSHIP 3829
- 83 LYLE FRED 102
- 84 BUCINE S. VERA L. 299
- 85 WISSON RIVER WEADINGS 742
- 86 WISSON RIVER WEADINGS 742
- 87 WISSON RIVER WEADINGS 742
- 88 WISSON RIVER WEADINGS 742
- 89 WISSON RIVER WEADINGS 742
- 90 WISSON RIVER WEADINGS 742
- 91 WISSON RIVER WEADINGS 742
- 92 WISSON RIVER WEADINGS 742
- 93 WISSON RIVER WEADINGS 742
- 94 WISSON RIVER WEADINGS 742
- 95 WISSON RIVER WEADINGS 742
- 96 WISSON RIVER WEADINGS 742
- 97 WISSON RIVER WEADINGS 742
- 98 WISSON RIVER WEADINGS 742
- 99 WISSON RIVER WEADINGS 742
- 100 KEL ROBERT M. 149
- 101 WISSON RIVER WEADINGS 742
- 102 WISSON RIVER WEADINGS 742
- 103 WISSON RIVER WEADINGS 742
- 104 WISSON RIVER WEADINGS 742
- 105 WISSON RIVER WEADINGS 742
- 106 WISSON RIVER WEADINGS 742
- 107 WISSON RIVER WEADINGS 742
- 108 WISSON RIVER WEADINGS 742
- 109 WISSON RIVER WEADINGS 742
- 110 WISSON RIVER WEADINGS 742
- 111 FOSTER BRAD 248
- 112 WELSH ROBERT J. 1049
- 113 WISSON RIVER WEADINGS 742
- 114 WISSON RIVER WEADINGS 742
- 115 WISSON RIVER WEADINGS 742
- 116 WISSON RIVER WEADINGS 742
- 117 WISSON RIVER WEADINGS 742
- 118 WISSON RIVER WEADINGS 742
- 119 WISSON RIVER WEADINGS 742
- 120 WISSON RIVER WEADINGS 742
- 121 WISSON RIVER WEADINGS 742
- 122 DAVIDS FAMILY TRUST 131

Legend

- Private
- State Lands
- Forest Service
- Local Govt
- Bureau of Land Management
- Native American
- National Park Service
- MFWP - WMA
- Other Federal Land
- Lake/Reservoir
- Fish and Wildlife Service
- Interstate
- Secondary Highway
- Highway
- Road
- Primitive Road
- River
- Stream/Creek
- Intermittent Creek
- Township
- County Border
- Fish Wildlife & Parks Wildlife Management Area

NOTES:
 Not all legend items may appear on this map.
 Features shown on this map do not imply public access to any lands.
 The land status data displayed on this map may not be complete and may contain errors in boundary locations and/or coding.
DISCLAIMER:
 The MT Natural Heritage Program, MT Data Library, MT Dept. of Administration and MT Dept. of Revenue make no representations or warranties whatsoever with respect to the accuracy or completeness of the data contained in these maps and assumes no responsibility for the suitability of these data for a particular purpose. These agencies will not be liable for any damages incurred as a result of errors displayed here. The ownership boundaries displayed on this map are not based on land survey data and are not a substitute for property surveys. This map displays public and private land ownership information derived from several sources and continues to be corrected and updated.

SOURCES/ACKNOWLEDGEMENTS
 This map was produced as a joint effort between the MT Dept. of Fish, Wildlife, and Parks (FWP) and the Montana Natural Resource Information System (NRIS) of the MT Data Library. In response to Montana Code Annotated 87-3-306, which directs FWP to work cooperatively with all state and federal land management agencies, to develop accurate land ownership maps, in the State's interest.
 The public land data is from the MT Natural Heritage Program land ownership data collection. Much of this data was originally digitized by the Bureau of Land Management (BLM) from 1:100,000 scale BLM Surface Management Status maps. Additional information, corrections and updates (especially for Tribal lands and private lands) were added by the University of Montana, Wildlife Spatial Analysis Unit, during 1996-1998. Since 1998, the Montana Natural Heritage Program has made numerous updates and corrections (especially for state trust lands, Montana Fish, Wildlife & Parks areas, US Fish & Wildlife Service areas, and conservation easements). These edits are based on data supplied by the various public agencies and land trusts, and have not been verified against county or Montana Department of Revenue records.
 The private land data were developed for the Montana Cadastral Database Project. These data are provided through a cooperative effort between the Montana Department of Administration (DOA), the Montana Department of Revenue (DOR), other state agencies, local governments, USDM/BLM and private enterprise. Lands depicted on this map represent single ownership or contiguous parcels that are at least 40 acres in size. The DOA maintains the GIS database layer and the DOR maintains the private ownership information.
 The base scale for the public ownership data is 1:100,000, though many of the recent edit maps were digitized from 1:24,000 scale maps or survey data. Private ownership data is accurate to scales of 1:24,000 or smaller.
 Map produced September 2008 with ownership data current as of August 2008.

USGS 100,000 Scale Quadrangle Index

81100	481100	481140	481170	481200	481230	481260	481290	481320	481350	481380	481410	481440
1160	481150	481180	481210	481240	481270	481300	481330	481360	481390	481420	481450	481480
116	471150	471180	471210	471240	471270	471300	471330	471360	471390	471420	471450	471480
471100	471130	471160	471190	471220	471250	471280	471310	471340	471370	471400	471430	471460
481100	481130	481160	481190	481220	481250	481280	481310	481340	481370	481400	481430	481460
481150	481180	481210	481240	481270	481300	481330	481360	481390	481420	481450	481480	481510
481100	481130	481160	481190	481220	481250	481280	481310	481340	481370	481400	481430	481460
481150	481180	481210	481240	481270	481300	481330	481360	481390	481420	481450	481480	481510
481100	481130	481160	481190	481220	481250	481280	481310	481340	481370	481400	481430	481460
481150	481180	481210	481240	481270	481300	481330	481360	481390	481420	481450	481480	481510
481100	481130	481160	481190	481220	481250	481280	481310	481340	481370	481400	481430	481460