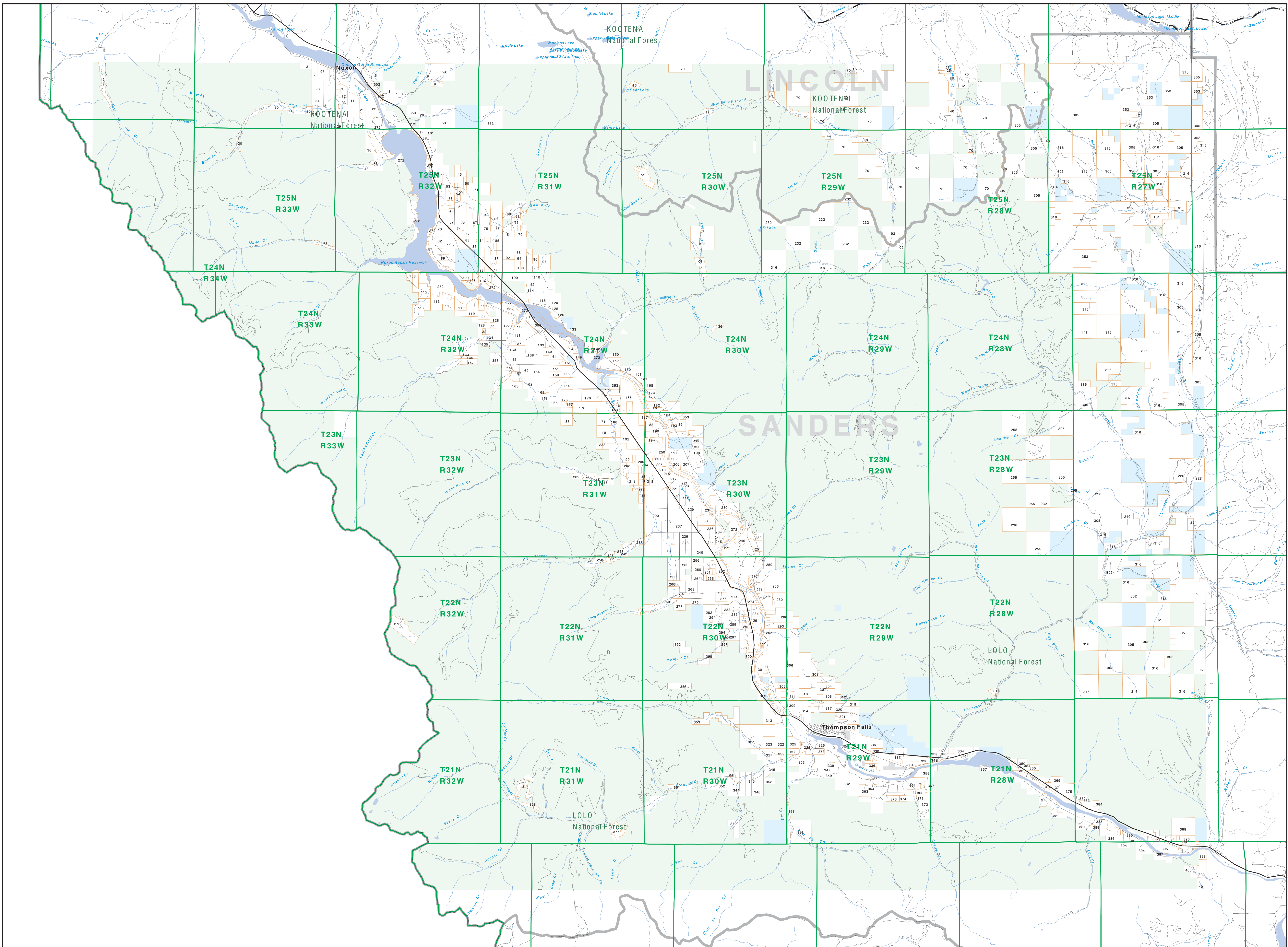


Private Land Ownership Identification

THOMPSON FALLS - (47115b)



Legend

- Private
- State Lands
- Forest Service
- Bureau of Land Management
- National Park Service
- Other Federal Land
- Fish and Wildlife Service
- Road
- Primitive Road
- River
- Stream/Creek
- Intermittent Creek
- Township
- County Border
- Fish Wildlife & Parks Wildlife Management Area
- Local Govt
- Native American
- MFWP - WMA
- Lake/Reservoir
- Secondary Highway
- Highway

NOTES
Not all legend items may appear on this map. Features shown on this map do not imply public access to any lands. The land status data displayed on this map may not be complete and may contain errors in boundary locations and/or coding. This map is a derivative of the Montana Department of Fish, Wildlife & Parks' National Heritage Program, MT State Library, MT Dept of Administration and MT Dept of Revenue make no representations or warranties whatsoever with respect to the accuracy or completeness of the data contained in these maps and assumes no responsibility for the availability of these data for any particular purpose. These agencies will not be liable for any damages incurred as a result of errors displayed here. The ownership boundaries displayed on this map are not based on land survey data and are not a substitute for a professional survey. This map displays public and private land ownership information derived from several sources and continues to be corrected and updated.

SOURCES / ACKNOWLEDGEMENTS
This map was produced as a joint effort between the MT Dept of Fish, Wildlife & Parks (FWP) and the Montana Natural Resource Information System (NRIS) of the MT State Library, in response to Montana Code Annotated §7-3-206, which directs the FWP to work cooperatively with state and federal land management agencies... to develop accurate land ownership maps... in the State. The public land data is from the MT Natural Heritage Program land ownership data collection. Much of this data was originally digitized by the Bureau of Land Management (BLM) from 1:50,000 scale 8.5x11 Surface Management Data maps. Additional information, corrections and updates (especially for small lands and private lands) were added by the University of Montana, Wildlife State Agency Unit, during 1995-1998. Since 1998, the Montana Natural Heritage Program has made numerous updates and corrections (especially for state trust lands, Montana Fish, Wildlife & Parks areas, US Fish & Wildlife Service areas, and conservation easements). These data are based on data supplied by the various public agencies and land trusts, and have not been verified against county or Montana Department of Revenue records.

The private land data were developed for the Montana Cadastral Database Project and this data are provided through a cooperative effort between the Montana Department of Administration (MDA), the Montana Department of Revenue (DOR), other state agencies, local governments, USGS BLM and private enterprise. Lands depicted on this map represent single ownership of contiguous parcels that are at least 40 acres in size. The DCA maintains the GIS cadastral layer and the DOR maintains the private ownership information. The base scale for the public ownership data is 1:50,000, though many of the recent cadastral maps were digitized from 1:24,000 scale maps or survey data. Private ownership data is accurate to scales of 1:24,000 or smaller.

Map produced September 2008 with ownership data current as of August 2008.

USGS 100,000 Scale Quadrangle Index

8110	8111	8112	8113	8114	8115	8116	8117	8118	8119	8120	8121	8122	8123	8124	8125	8126	8127	8128	8129	8130	8131	8132	8133	8134	8135	8136	8137	8138	8139	8140	8141	8142	8143	8144	8145	8146	8147	8148	8149	8150
8151	8152	8153	8154	8155	8156	8157	8158	8159	8160	8161	8162	8163	8164	8165	8166	8167	8168	8169	8170	8171	8172	8173	8174	8175	8176	8177	8178	8179	8180	8181	8182	8183	8184	8185	8186	8187	8188	8189	8190	